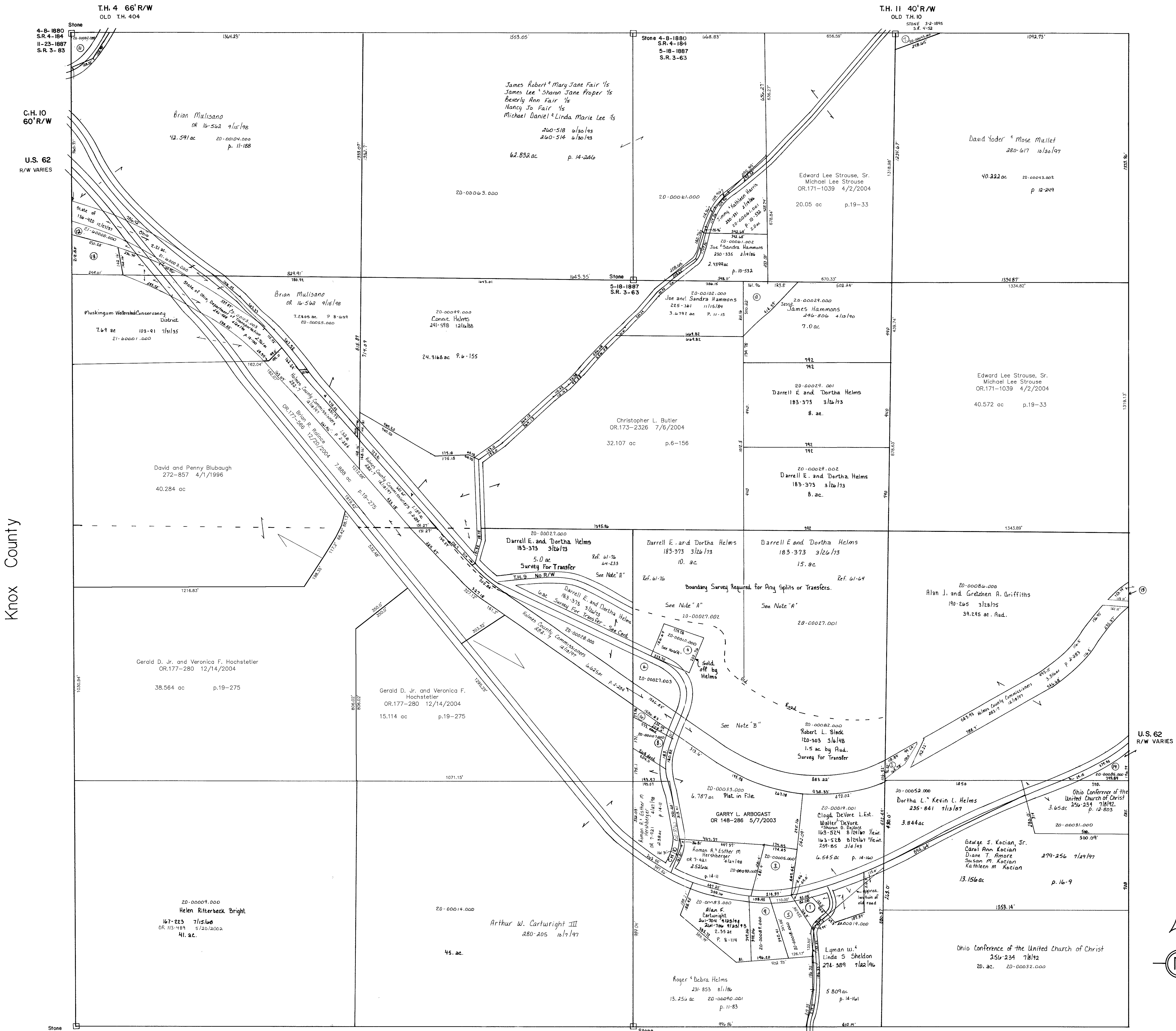
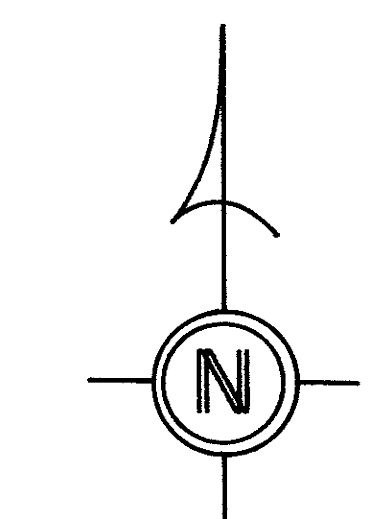


Section 16
R-2

Section 24
R-6



Knox County



NOTE "A"
 THE PROPERTIES OWNED BY DARRELL HELMS AND ROBERT BLACK HAVE VERY POOR DESCRIPTIONS. IT IS POSSIBLE THAT HELMS IS OCCUPYING LANDS WHICH ARE DESCRIBED ON BLACK'S DEED. BY RESEARCHING THESE PARCELS, IT WAS FOUND THAT THE ORIGINAL DEED DESCRIPTIONS LOCATED THESE TRACTS NORTH OF THE ROAD. FOR MORE INFORMATION, SEE PROPERTY CARD.

NOTE "B"
 IT CAN NOT BE DETERMINED EXACTLY WHAT BLACK HAS LEFT, HOWEVER, RESEARCH INDICATES THERE IS MORE THAN 15 AC AS CARRIED ON THE TAX DUPLICATE. FOR MORE INFORMATION, SEE PROPERTY CARD.

Coshocton County

T-8, R-9, Sec. 25
 RICHLAND TWP
 SCALE 1" = 200'

Last Revision: 12/20/2004

LET IT BE KNOWN, THIS MAP HAS BEEN PREPARED AS A REFERENCE GUIDE TO PROPERTY OWNERSHIP. WE BELIEVE THIS INFORMATION TO BE CORRECT AND CURRENT, HOWEVER, IT IS NOT INTENDED FOR ANY LEGAL USE, WHETHER IT BE IN SALES, TRANSFERS, TRADES, LEASES OF ANY TYPE, ETC., AND DO NOT ACCEPT RESPONSIBILITY FOR ERRORS OF ANY NATURE OR OMISSIONS CONTAINED HEREIN.

IR-1