

PR-12

PR-19

PR-25

PR-11

PR-23

H-18

H-24

H-17

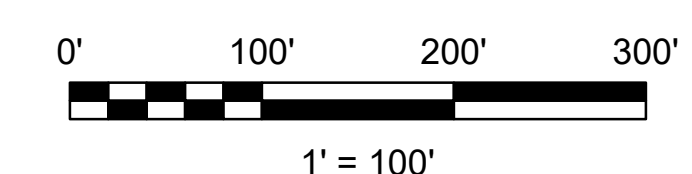
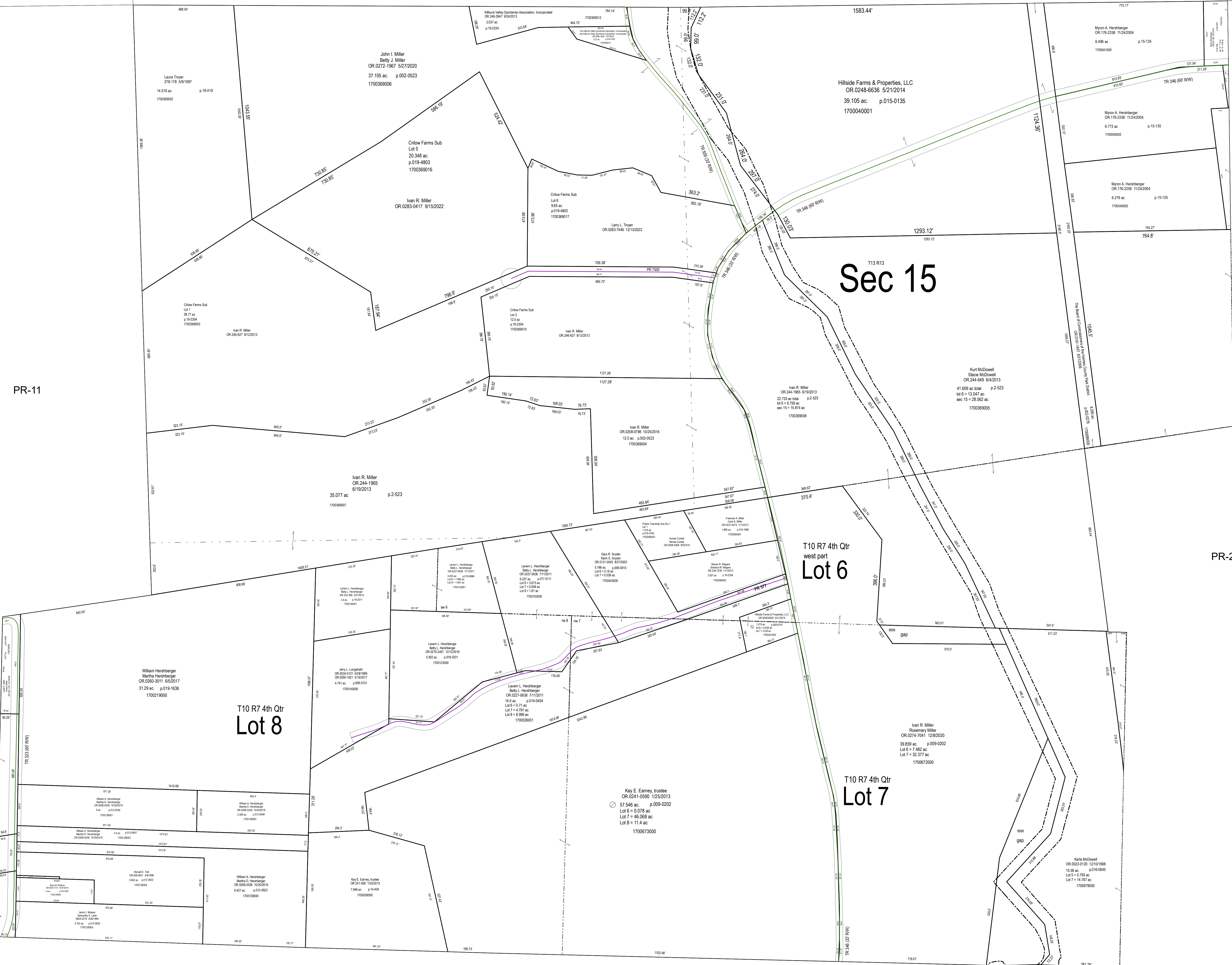
H-24

Sec 15

T10 R7 4th Qtr Lot 8

T10 R7 4th Qtr west part Lot 6

T10 R7 4th Qtr Lot 7



LET IT BE KNOWN, THIS MAP HAS BEEN PREPARED AS A REFERENCE GUIDE TO PROPERTY OWNERSHIP. WE BELIEVE THIS INFORMATION TO BE CORRECT AND CURRENT. HOWEVER, IT IS NOT INTENDED FOR ANY LEGAL USE, WHETHER IT BE SALES, TRANSFERS, TRADES, LEASES OF ANY TYPE, ETC. AND DO NOT ACCEPT RESPONSIBILITY FOR ERRORS OF ANY NATURE OR OMISSIONS CONTAINED HEREIN.

S.F.T.
new survey required for next transfer

Last Revision: 1/3/2023

**Lot 6 (w) and Lots 7 & 8
4th Qtr., T-10, R-7
Sec. 15, T-13, R-13
Prairie Twp.
Holmes County, Ohio**

PR-16