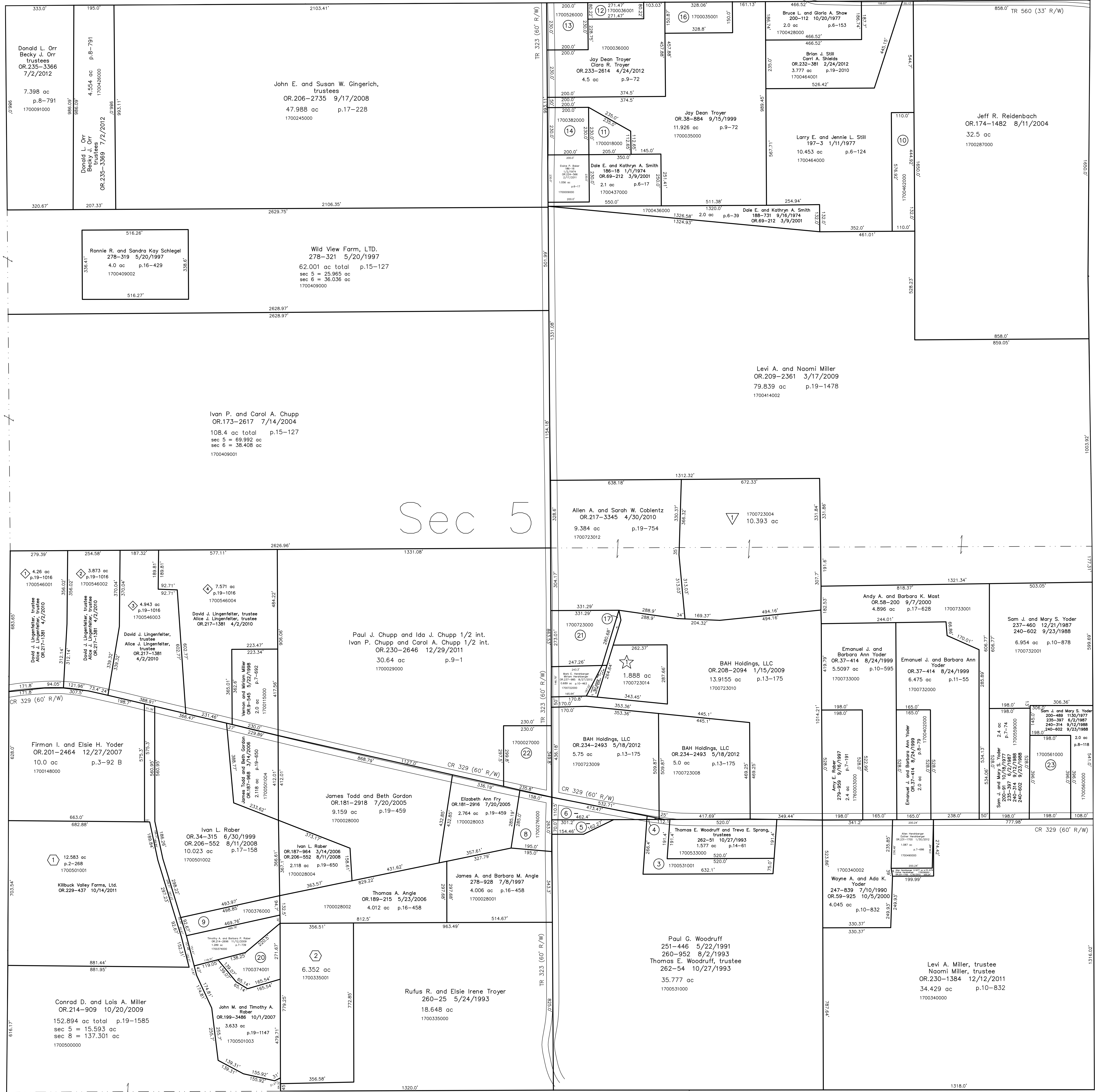


- 1700531001 (3) Thomas E. Woodruff and Treva E. Sprang, trustees
262-51 10/27/1993
1.577 ac p.14-81
- 1700054001 (4) Thomas E. Woodruff and Treva E. Sprang, trustees
262-51 10/27/1993
0.016 ac p.14-81
- 1700531002 (5) Stephen O. and Cynthia J. Byler
257-585 10/16/1992
0.366 ac p.14-81
- 1700054000 (6) Stephen O. and Cynthia J. Byler
231-769 7/22/1995
0.674 ac

- 1700276000 (8) Ronald D. and Sandra S. Scherer
232-851 10/22/1986
1.1 ac p.4-16
- 1700376000 (9) Ivan L. Rober
209-450 5/9/1980
OR.206-552 8/11/2008
1.026 ac p.8-602
- 1700462000 (10) E. Eugene and Betty June Still
107-544 4/5/1977
203-818 10/31/1978
1.45 ac p.6-133
- 1700018000 (11) Gary V. Stasz
178-355 4/4/2001
OR.178-3432 3/22/2005
0.8 ac p.7-747
- 1700036001 (12) James B. Flegel
257-390 10/2/1992
OR.202-2265 2/19/2008
Deborah Holdiman
OR.202-2268 2/19/2008
0.5 ac p.14-51
- 1700526000 (13) Thelma and Simon Ball
OR.200-310 11/9/2007
1.056 ac p.6-17
- 1700382000 (14) Forefront Properties
OR.186-2001 5/01/2007
1.056 ac p.6-17

- 1700035001 (16) Clifford E. Rotta
OR.22-575 12/17/1998
1.134 ac p.16-956
- 1700723011 (17) Joseph L. and Nancy L. Hasfield, trustees
OR.184-2953 11/16/2005
0.1355 ac p.19-546

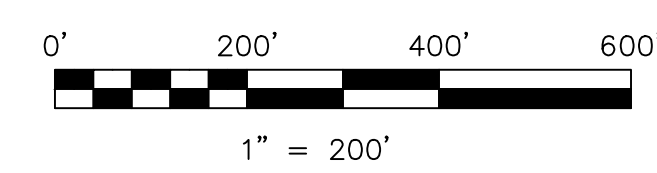
- 1700374001 (20) John M. and Timothy A. Rober
OR.199-3486 10/1/2007
1.163 ac p.19-1147
- 1700723000 (21) Joseph L. and Nancy L. Hasfield, trustees
OR.167-11 9/26/2003
1.793 ac p.13-175
- 1700027000 (22) Wayne W. and Rachel M. Kuhns
OR.200-310 11/9/2007
1.71 ac p.4-122
- 1700561000 (23) Sam J. and Mary S. Yoder
200-81 10/19/1977
235-397 6/2/1987
240-314 9/12/1988
240-602 9/23/1988
1.8 ac p.7-85



T13, R13, Sec.6 PR-03

T13, R13, Sec.4 PR-13

- ★ Diamond View Subdivision
Plat 19-1029 Platted 5/3/2007
- ★ Wayne W. Kuhns, Meta Weaver, Sam Yoder
Trustees of the Diamond View School
OR.202-399 1/18/2008
1.888 ac p.19-1029
- ▽ Holmesville Farms Subdivision
Plat 19-686 Platted 4/26/2006
- ▽ Holmesville Farms, LLC
OR.186-1794 5/2/2006
10.393 ac p.19-686
- Matt and Dick Allotment No.1
Plat 2-268 Platted 1/16/1997
- Matt and Dick Allotment No.1 First Addition
Plat 2-396 Platted 6/8/2005
- John M. and Timothy A. Rober
OR.180-3424 6/17/2005
6.352 ac p.2-396
- ◇ The Lingenfelter Subdivision
Plat 19-1016 Platted 5/8/2007



LET IT BE KNOWN, THIS MAP HAS BEEN PREPARED AS A REFERENCE GUIDE TO PROPERTY OWNERSHIP. WE BELIEVE THIS INFORMATION TO BE CORRECT AND CURRENT, HOWEVER IT IS NOT INTENDED FOR ANY LEGAL USE, WHETHER IT BE IN SALES, TRANSFERS, TRADES, LEASES OF ANY TYPE, ETC., AND DO NOT ACCEPT RESPONSIBILITY FOR ERRORS OF ANY NATURE OR OMISSIONS CONTAINED HEREIN.

new survey required for next transfer

Last Revision: 8/27/2012

**T-13, R-13, Sec.5
Prairie Twp.
Holmes County, Ohio**

PR-08