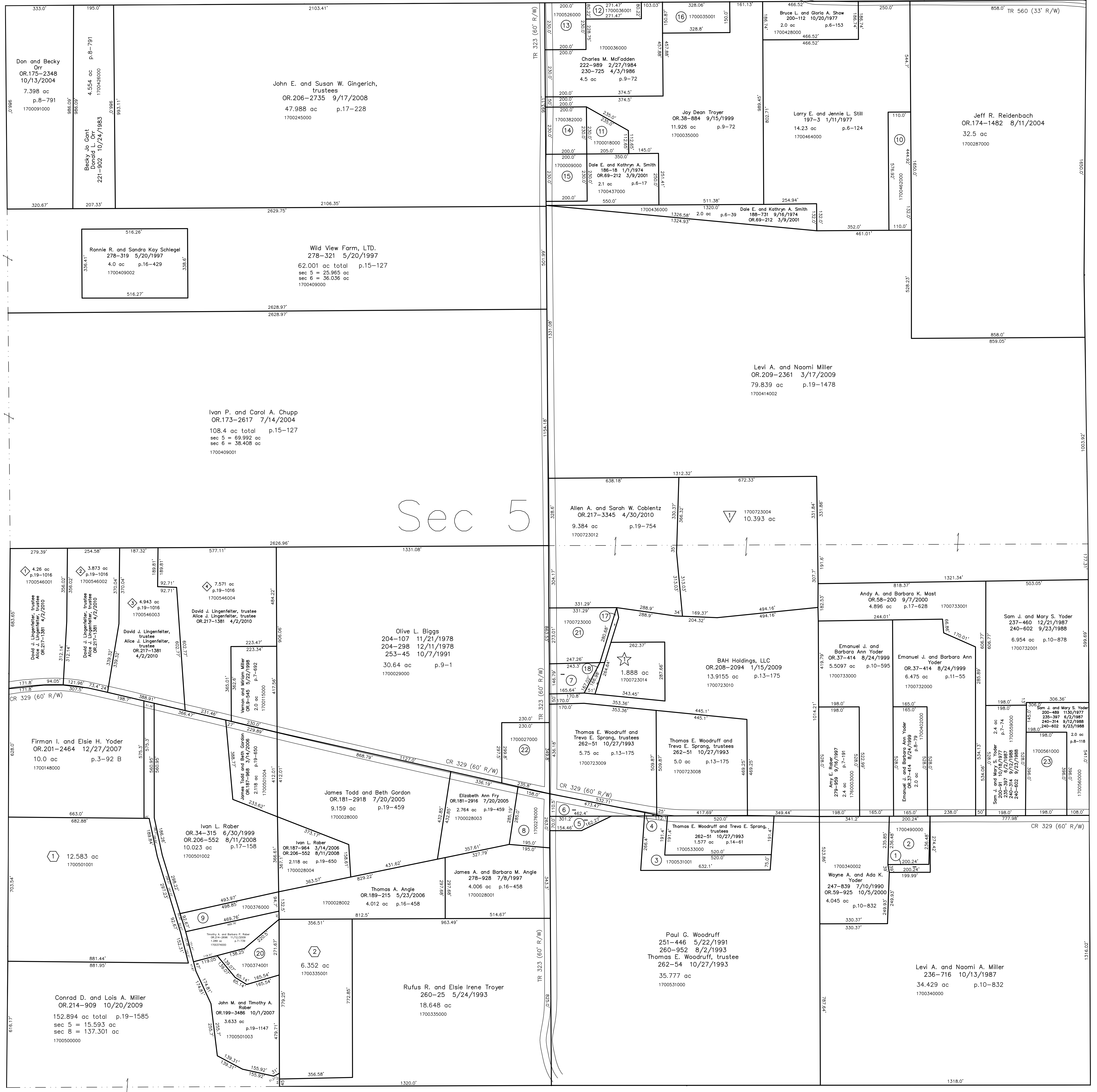


- 1700340001 ① Wayne M. and Marie W. Yoder
OR.76-481 5/31/2001
0.1977 ac p.10-214
- 1700490000 ② Wayne M. and Marie W. Yoder
OR.76-481 5/31/2001
1.087 ac p.7-686
- 1700531001 ③ Thomas E. Woodruff and Treva E. Sprang, trustees
262-51 10/27/1993
1.577 ac p.14-61
- 1700054001 ④ Thomas E. Woodruff and Treva E. Sprang, trustees
262-51 10/27/1993
0.016 ac p.14-61
- 1700531002 ⑤ Stephen O. and Cynthia J. Byler
257-585 10/16/1992
0.366 ac p.14-61
- 1700054000 ⑥ Stephen O. and Cynthia J. Byler
251-769 7/22/1995
0.674 ac p.14-61
- 1700722000 ⑦ Marlin J. and Victoria J. Yoder
OR.9-685 5/26/1998
0.889 ac p.10-463
- 1700276000 ⑧ Ronald D. and Sandra S. Scherer
232-851 10/22/1986
1.1 ac p.4-16
- 1700376000 ⑨ Ivan L. Rober
209-450 5/9/1980
OR.206-552 8/11/2008
1.026 ac p.8-602
- 1700462000 ⑩ E. Eugene and Betty June Still
197-544 4/9/1977
203-818 10/31/1978
1.45 ac p.6-133
- 1700018000 ⑪ Gary V. Stess
OR.178-3432 3/22/2005
0.8 ac p.7-147
- 1700036001 ⑫ James B. Fligey
257-390 10/2/1992
OR.202-2265 2/19/2008
Deborah Holdiman
OR.202-2268 2/19/2008
0.5 ac p.14-51
- 1700526000 ⑬ Thelma and Simon Ball
OR.200-3100 11/29/2007
1.056 ac p.6-17
- 1700382000 ⑭ Forefront Properties
OR.186-2001 5/01/2007
1.056 ac p.6-17
- 1700090000 ⑮ Dale A. and Elaine P. Baker
186-16 1/2/1974
1.056 ac p.6-17
- 1700035001 ⑯ Clifford E. Rattie
OR.22-575 12/17/1998
1.134 ac p.16-956
- 1700723011 ⑰ Joseph L. and Nancy L. Hosfeld, trustees
OR.184-2963 11/16/2005
0.1355 ac p.19-546
- 1700723013 ⑱ Marlin J. and Victoria J. Yoder
OR.196-1139 4/24/2007
0.137 ac p.19-994
- 0000000000 ⑲ not used

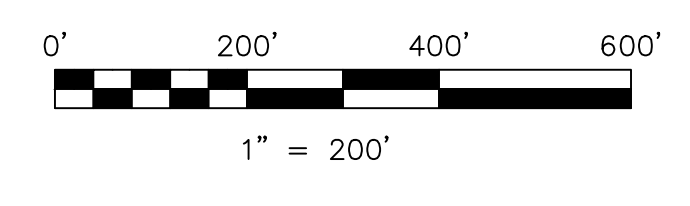
- 1700374001 ⑳ John M. and Timothy A. Rober
OR.199-3486 10/1/2007
1.163 ac p.19-1147
- 1700723000 ㉑ Joseph L. and Nancy L. Hosfeld, trustees
OR.167-11 9/26/2003
1.793 ac p.13-175
- 1700027000 ㉒ Wayne W. and Rachel M. Kuhns
278-695 6/18/1997
1.71 ac p.4-122
- 1700561000 ㉓ Sam J. and Mary S. Yoder
200-81 10/19/1977
235-397 6/2/1987
240-314 9/12/1988
240-602 9/23/1988
1.8 ac p.7-85

T13, R13, Sec.6 PR-03



- ① Diamond View Subdivision
Plat 19-1029 Platted 5/3/2007
- ② The Lingenfelter Subdivision
Plat 19-1016 Platted 5/8/2007
- ③ Holmesville Farms Subdivision
Plat 19-686 Platted 4/26/2006
- ④ Matt and Dick Allotment No.1
Plat 2-268 Platted 1/16/1997
- ⑤ Matt and Dick Allotment No.1 First Addition
Plat 2-396 Platted 6/8/2005
- ⑥ John M. and Timothy A. Rober
OR.180-3424 6/17/2005
6.352 ac p.2-396

T13, R13, Sec.8 PR-07



LET IT BE KNOWN, THIS MAP HAS BEEN PREPARED AS A REFERENCE GUIDE TO PROPERTY OWNERSHIP. WE BELIEVE THIS INFORMATION TO BE CORRECT AND CURRENT, HOWEVER IT IS NOT INTENDED FOR ANY LEGAL USE, WHETHER IT BE IN SALES, TRANSFERS, TRADES, LEASES OF ANY TYPE, ETC., AND DO NOT ACCEPT RESPONSIBILITY FOR ERRORS OF ANY NATURE OR OMISSIONS CONTAINED HEREIN.

new survey required for next transfer

Last Revision: 4/30/2010

**T-13, R-13, Sec.5
Prairie Twp.
Holmes County, Ohio**

PR-08

T13, R13, Sec.4 PR-13