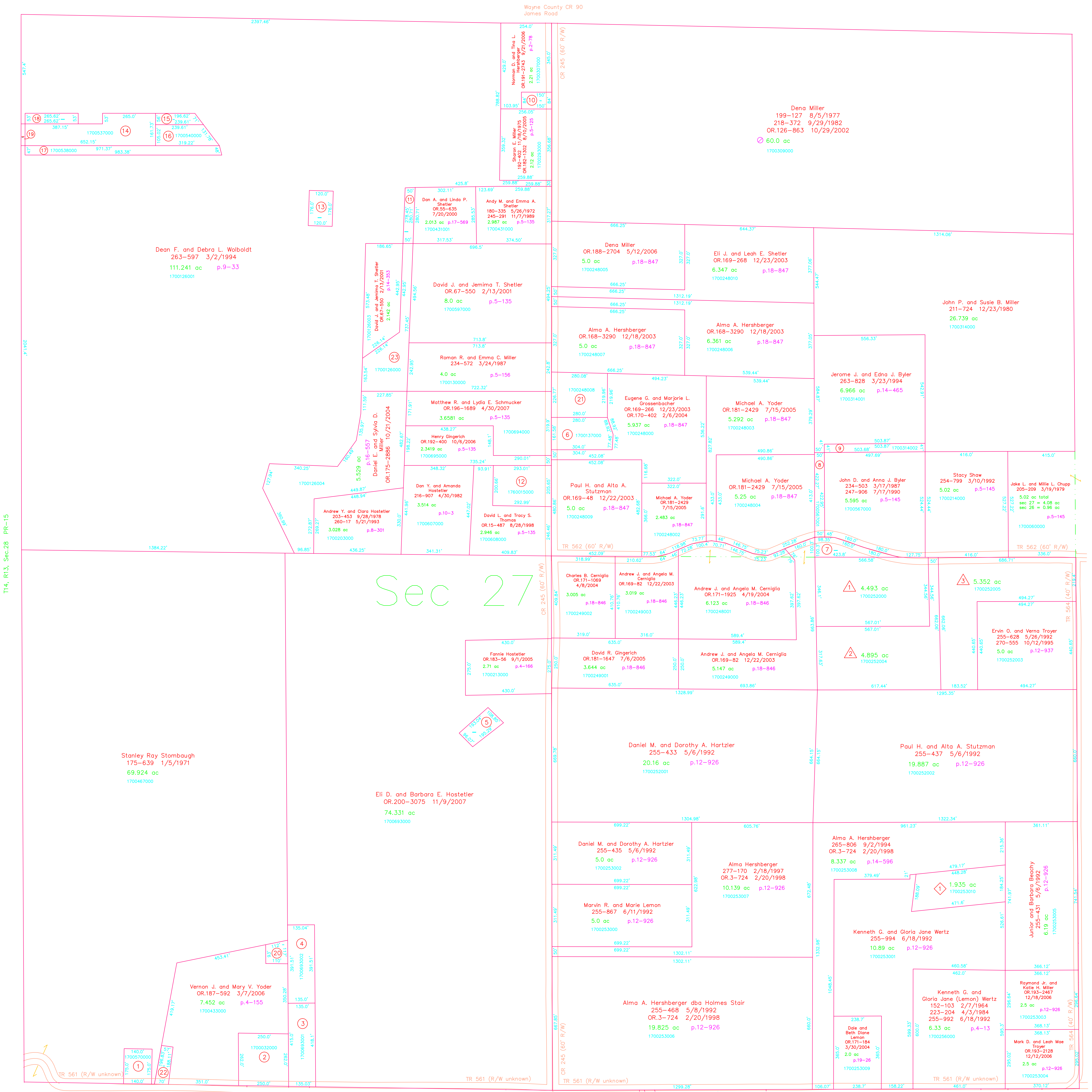
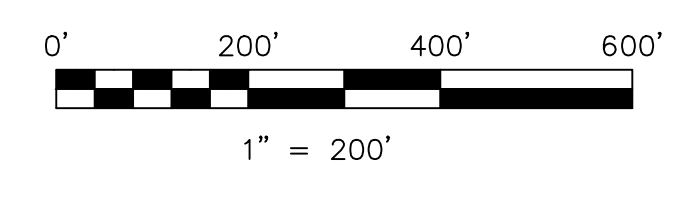


- 1700570000 ① Mahlon and Emma Shetter
250-513 4/12/1993
0.576 ac p.3-79
- 1700032000 ② Alben Realty, Ltd.
OR.97-779 12/28/2001
1.5 ac p.5-149
- 1700693001 ③ William J. and Ella W. Miller
OR.20-787 11/20/1998
1.291 ac p.12-415
- 1700693002 ④ William J. and Ella Miller
247-73 5/2/1990
1.2135 ac p.12-415
- 1700692000 ⑤ Eli D. and Barbara E. Hostetter
OR.200-3075 11/9/2007
0.4545 ac p.10-342
- 1700137000 ⑥ Eugene G. and Marjorie Grossenbacher
206-1 5/25/1979
1.114 ac p.8-429
- 1700609000 ⑦ John D. and Anna J. Byler
234-503 3/17/1987
247-906 7/17/1990
0.58 ac p.5-145
- 1700567001 ⑧ Jerome J. and Edna J. Byler
263-826 3/23/1994
0.485 ac p.14-465
- 1700314002 ⑨ John D. and Anna J. Byler
263-831 3/23/1994
0.485 ac p.14-465
- 1700590000 ⑩ Sharon E. Miller
192-404 11/18/1975
OR.182-1302 8/10/2005
0.29 ac p.5-125
- 1700126002 ⑪ Dean F. and Debra L. Walboldt
263-597 3/2/1994
0.321 ac p.14-353
- 1760015000 ⑫ Trustees of the Tea Run School
(Amiah Parochial School)
208-717 2/15/1980
1.36 ac p.8-572
- 1700605000 ⑬ Yoder Cemetery, Inc.
202-126 5/26/1978
0.485 ac p.8-205
- 1700537000 ⑭ Dennis E. and Amy D. Hilty
OR.174-2128 8/20/2004
1.95 ac p.4-102
- 1700541000 ⑮ Dennis E. and Amy D. Hilty
OR.174-2128 8/20/2004
0.294 ac p.9-33
- 1700540000 ⑯ Dennis E. and Amy D. Hilty
OR.174-2128 8/20/2004
0.674 ac p.9-33
- 1700538000 ⑰ Dennis E. and Amy D. Hilty
OR.174-2128 8/20/2004
1.055 ac p.9-33
- 1700539000 ⑱ Dennis E. and Amy D. Hilty
OR.174-2128 8/20/2004
0.323 ac p.9-33
- 1700127000 ⑲ Dean F. and Debra L. Walboldt
263-597 3/2/1994
0.05 ac p.9-33
- 1700433001 ⑳ William J. and Ella Miller
OR.82-420 7/24/2001
0.267 ac p.18-25
- 1700248008 ㉑ Terry L. and Beverly L. Rober
OR.187-840 3/13/2006
1.436 ac p.18-847
- 1700433002 ㉒ Mahlon J. and Emma M. Shetter
OR.188-2657 2/18/2006
0.281 ac p.18-835
- 1700126000 ㉓ David J. and Jimma T. Shetter
OR.67-550 2/13/2001
1.787 ac p.12-403



- △ Jake Chupp Subdivision
Plat 17-597 Platted 8/9/2000
- 1700252000 △ Jason J. and Anna Mae Chupp
OR.58-293 9/8/2000
OR.105-550 3/4/2002
4.493 ac p.17-597
- 1700252004 △ Jeremy J. and Calista S. Chupp
OR.58-291 9/8/2000
4.895 ac p.17-597
- 1700252005 △ Jake L. and Millie L. Chupp
255-826 5/26/1992
5.352 ac p.17-597
- ◇ Lemon Subdivision
Plat 19-494 Platted 9/15/2005
- 1700253010 ◇ Kenneth G. and Gloria Jane Wertz
255-994 6/18/1992
1.935 ac p.19-494



LET IT BE KNOWN, THIS MAP HAS BEEN PREPARED AS A REFERENCE GUIDE TO PROPERTY OWNERSHIP. WE BELIEVE THIS INFORMATION TO BE CORRECT AND CURRENT. HOWEVER, IT IS NOT INTENDED FOR ANY LEGAL USE, WHETHER IT BE IN SALES, TRANSFERS, TRADES, LEASES OF ANY TYPE, ETC., AND DO NOT ACCEPT RESPONSIBILITY FOR ERRORS OF ANY NATURE OR OMISSIONS CONTAINED HEREIN.

new survey required for next transfer

Last Revision: 11/9/2007

T-14, R-13, Sec.27
Prairie Twp.
Holmes County, Ohio

PR-22