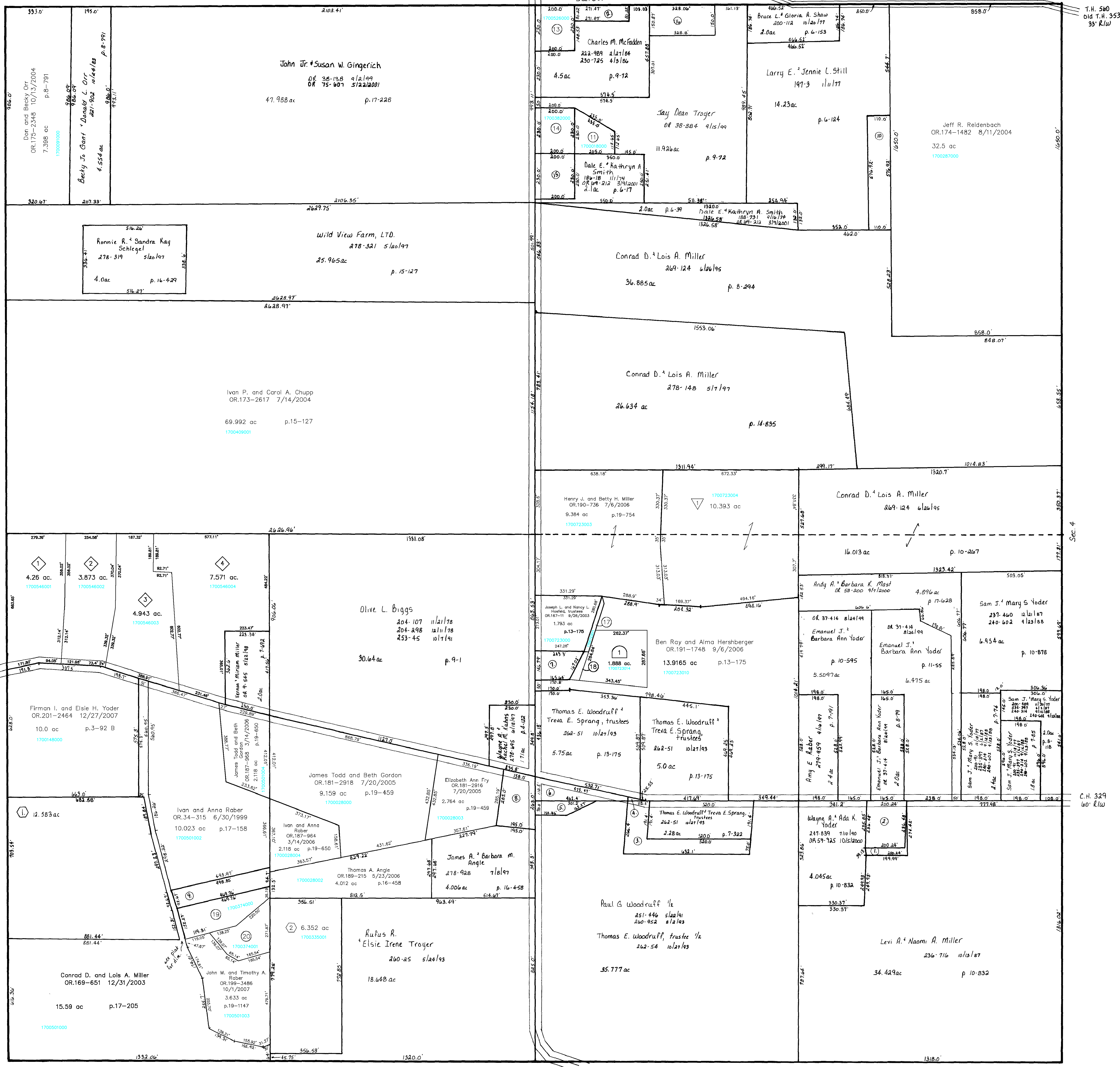


T.H. 323
Old T.H. same
60' R/W

T.H. 560
Old T.H. 555
33' R/W



- ① YODER WAYNE M. AND MARIE W.
OR.0076-481 5/31/2001
1.977 ac p.10-674
- ② YODER WAYNE M. AND MARIE W.
OR.0076-481 5/31/2001
1.877 ac p.11-686
- ③ WOODRUFF, THOMAS E.
SPRANG, TREVA E. TRUSTEES
262-51 10/27/1993
1.577 ac p.11-686
- ④ WOODRUFF, THOMAS E.
SPRANG, TREVA E. TRUSTEES
262-51 10/27/1993
0.016 ac p.11-686
- ⑤ BYLER STEPHEN O. AND CYNTHIA J.
257-585 10/16/1992
0.366 ac p.14-61
- ⑥ BYLER STEPHEN O. AND CYNTHIA J.
231-769 7/22/1995
0.674 ac
- ⑦ YODER MARLIN J. AND VICTORIA J.
OR.0009-685 5/26/1998
0.689 ac p.10-463
- ⑧ SCHERER RONALD D. AND SANDRA S.
232-881 10/22/1986
1.1 ac p.4-16
- ⑨ RABER IVAN L. AND ANNA E.
209-450 5/9/1980
1.026 ac p.8-602
- ⑩ STILL E. EUGENE AND BETTY JUNE
197-544 4/5/1977
203-818 10/31/1978
1.45 ac p.6-133
- ⑪ Gary V. Stasz
OR.21-305 4/4/2001
OR.178-3432 3/22/2005
0.8 ac p.7-747
- ⑫ FIGLEY JAMES B. AND LESLIE A.
257-380 10/2/1992
0.5 ac p.14-51
- ⑬ Thelma and Simon Ball
OR.200-3100 11/9/2007
1.056 ac p.8-17
- ⑭ Forefront Properties
OR.196-2001 5/01/2007
1.056 ac p.8-17
- ⑮ BAKER DALE A. AND ELAINE P.
186-16 1/2/1974
1.056 ac p.8-17
- ⑯ RATTIA CLIFFORD E.
OR.0022-575 12/17/1998
1.134 ac p.16-956
- ⑰ Joseph L. and Nancy L. Hasfield, trustees
OR.184-2953 11/16/2005
0.1355 ac p.19-546
- ⑱ Martin J. & Victoria J. Yoder
OR.186-1139 4/24/2007
0.137 ac p.19-994
- ⑲ Ivan L. and Anna E. Raber
198-582 12/3/1976
263-328 2/7/1994
1.289 ac p.7-739
- ⑳ John M. and Timothy A. Raber
OR.199-3486 10/7/2007
1.163 ac p.19-1147
- ㉑ Holmesville Farms Subdivision
Plot 19-686 Platted 4/26/2006
1700723004 Holmesville Farms, LLC
OR.188-1794 5/2/2006
10.393 ac p.19-686
- ㉒ Diamond View Subdivision
Plot 19-1029 Platted 5/23/2007
1700723014 Ben Ray and Alma Hershberger
OR.191-1748 9/6/2006
1.888 ac p.19-1029
- ㉓ Matt and Dick Allotment No. 1
Plot 2-268 Platted 1/16/1997
① KOLLERT MATTHEW
786-807 1/23/1997
12.583 ac
- ㉔ The Lingenfelter Subdivision
Plot 19-1016 Platted 5/8/2007
1700546001 David J. & Alice J. Lingenfelter
226-39 1/15/1985
4.58 ac p.19-1016
- ㉕ David J. & Alice J. Lingenfelter
226-39 1/15/1985
3.873 ac p.19-1016
- ㉖ David J. & Alice J. Lingenfelter
226-39 1/15/1985
4.943 ac p.19-1016
- ㉗ David J. & Alice J. Lingenfelter
226-39 1/15/1985
7.571 ac p.19-1016

Last Revision: 12/27/2007

T-13, R-13, Sec. 5
Prairie Township

HOLMES CO. OHIO
SCALE: 1" = 200'

PR-8
12/24/95

LET IT BE KNOWN, THIS MAP HAS BEEN PREPARED AS A REFERENCE GUIDE TO PROPERTY OWNERSHIP. WE BELIEVE THIS INFORMATION TO BE CORRECT AND CURRENT. HOWEVER, IT IS NOT INTENDED FOR ANY LEGAL USE, WHETHER IT BE IN SALES, TRANSFERS, TRADES, LEASES OF ANY TYPE, ETC., AND DO NOT ACCEPT RESPONSIBILITY FOR ERRORS OF ANY NATURE OR OMISSIONS CONTAINED HEREIN.