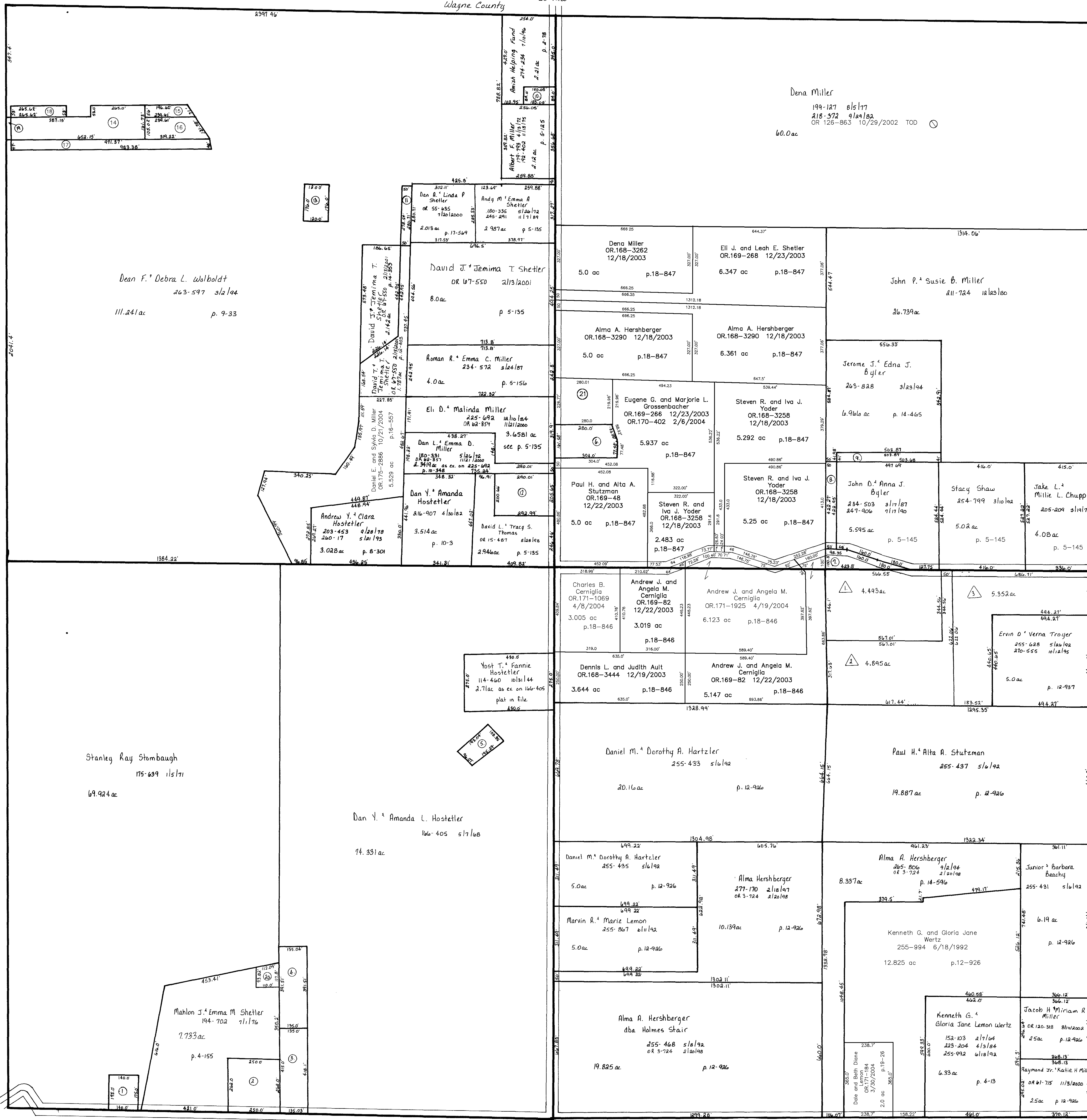


Wayne County  
C.H. 245  
40' R/W



Dean F. & Debra L. Walboldt  
263-597 s/w/100  
111.241 ac p. 9-23

Stanley Ray Stombaugh  
175-639 s/w/171  
69.924 ac

Dan V. & Amanda L. Hostetler  
166-405 s/w/168  
74.331 ac

Mahlon J. & Emma M. Shetler  
194-702 s/w/176  
7.733 ac p. 4-155

Deno Miller  
199-127 s/w/177  
218-972 s/w/182  
OR 126-863 10/29/2002 TOD

Yost T. & Fannie Hostetler  
114-460 s/w/144  
2.71 ac as ex on 106-405  
plat in file

Charles B. Cerniglia  
OR.171-1069  
4/8/2004  
3.005 ac p.18-846

Dennis L. and Judith Ault  
OR.168-3444  
12/19/2003  
3.644 ac p.18-846

Daniel M. & Dorothy A. Hartzler  
255-433 s/w/192  
20.16 ac p. 12-926

Daniel M. & Dorothy A. Hartzler  
255-435 s/w/192  
5.0 ac p. 12-926

Marvin R. & Marie Lemon  
255-867 s/w/192  
5.0 ac p. 12-926

Alma A. Hershberger  
dba Holmes Stair  
255-468 s/w/192  
OR 3-724 s/w/198  
19.825 ac p. 12-926

Eugene G. and Marjorie L. Gossenbacher  
OR.169-286 12/23/2003  
OR.170-402 2/6/2004  
5.937 ac p.18-847

Paul H. and Alta A. Stutzman  
OR.169-48  
12/22/2003  
5.0 ac p.18-847

Charles B. Cerniglia  
OR.171-1069  
4/8/2004  
3.005 ac p.18-846

Dennis L. and Judith Ault  
OR.168-3444  
12/19/2003  
3.644 ac p.18-846

Daniel M. & Dorothy A. Hartzler  
255-433 s/w/192  
20.16 ac p. 12-926

Daniel M. & Dorothy A. Hartzler  
255-435 s/w/192  
5.0 ac p. 12-926

Marvin R. & Marie Lemon  
255-867 s/w/192  
5.0 ac p. 12-926

Alma A. Hershberger  
dba Holmes Stair  
255-468 s/w/192  
OR 3-724 s/w/198  
19.825 ac p. 12-926

Eli J. and Leah E. Shetler  
OR.169-268 12/23/2003  
6.347 ac p.18-847

Alma A. Hershberger  
OR.168-3290 12/18/2003  
5.0 ac p.18-847

Alma A. Hershberger  
OR.168-3290 12/18/2003  
6.361 ac p.18-847

Steven R. and Iva J. Yoder  
OR.168-3258  
12/18/2003  
5.292 ac p.18-847

Steven R. and Iva J. Yoder  
OR.168-3258  
12/18/2003  
5.25 ac p.18-847

Andrew J. and Angela M. Cerniglia  
OR.171-1925 4/19/2004  
6.123 ac p.18-846

Andrew J. and Angela M. Cerniglia  
OR.169-82 12/22/2003  
5.147 ac p.18-846

Daniel M. & Dorothy A. Hartzler  
255-433 s/w/192  
20.16 ac p. 12-926

Daniel M. & Dorothy A. Hartzler  
255-435 s/w/192  
5.0 ac p. 12-926

Marvin R. & Marie Lemon  
255-867 s/w/192  
5.0 ac p. 12-926

Alma A. Hershberger  
dba Holmes Stair  
255-468 s/w/192  
OR 3-724 s/w/198  
19.825 ac p. 12-926

John P. & Susie B. Miller  
211-724 s/w/180  
26.739 ac

Alma A. Hershberger  
OR.168-3290 12/18/2003  
6.361 ac p.18-847

Alma A. Hershberger  
OR.168-3290 12/18/2003  
6.361 ac p.18-847

Steven R. and Iva J. Yoder  
OR.168-3258  
12/18/2003  
5.292 ac p.18-847

Steven R. and Iva J. Yoder  
OR.168-3258  
12/18/2003  
5.25 ac p.18-847

Andrew J. and Angela M. Cerniglia  
OR.171-1925 4/19/2004  
6.123 ac p.18-846

Andrew J. and Angela M. Cerniglia  
OR.169-82 12/22/2003  
5.147 ac p.18-846

Daniel M. & Dorothy A. Hartzler  
255-433 s/w/192  
20.16 ac p. 12-926

Daniel M. & Dorothy A. Hartzler  
255-435 s/w/192  
5.0 ac p. 12-926

Marvin R. & Marie Lemon  
255-867 s/w/192  
5.0 ac p. 12-926

Alma A. Hershberger  
dba Holmes Stair  
255-468 s/w/192  
OR 3-724 s/w/198  
19.825 ac p. 12-926

T.H. 562  
Old T.H. 490  
NO R/W

T.H. 561  
Old T.H. 391  
40' R/W

T.H. 561  
Old T.H. 246  
R/W unknown

Jake Chupp Subdivision  
plat 17-597 platted s/w/1000 PR-22 A

C.H. 245  
40' R/W

Updated: 10/21/2004

T-14, R-13, Sec. 27  
Prairie Township

HOLMES CO. OHIO  
SCALE: 1" = 200'

PR-22

LET IT BE KNOWN, THIS MAP HAS BEEN PREPARED AS A REFERENCE GUIDE TO PROPERTY OWNERSHIP. WE BELIEVE THIS INFORMATION TO BE CORRECT AND CURRENT, HOWEVER, IT IS NOT INTENDED FOR ANY LEGAL USE, WHETHER IT BE IN SALES, TRANSFERS, TRADES, LEASES OF ANY TYPE, ETC., AND DO NOT ACCEPT RESPONSIBILITY FOR ERRORS OF ANY NATURE OR OMISSIONS CONTAINED HEREIN.