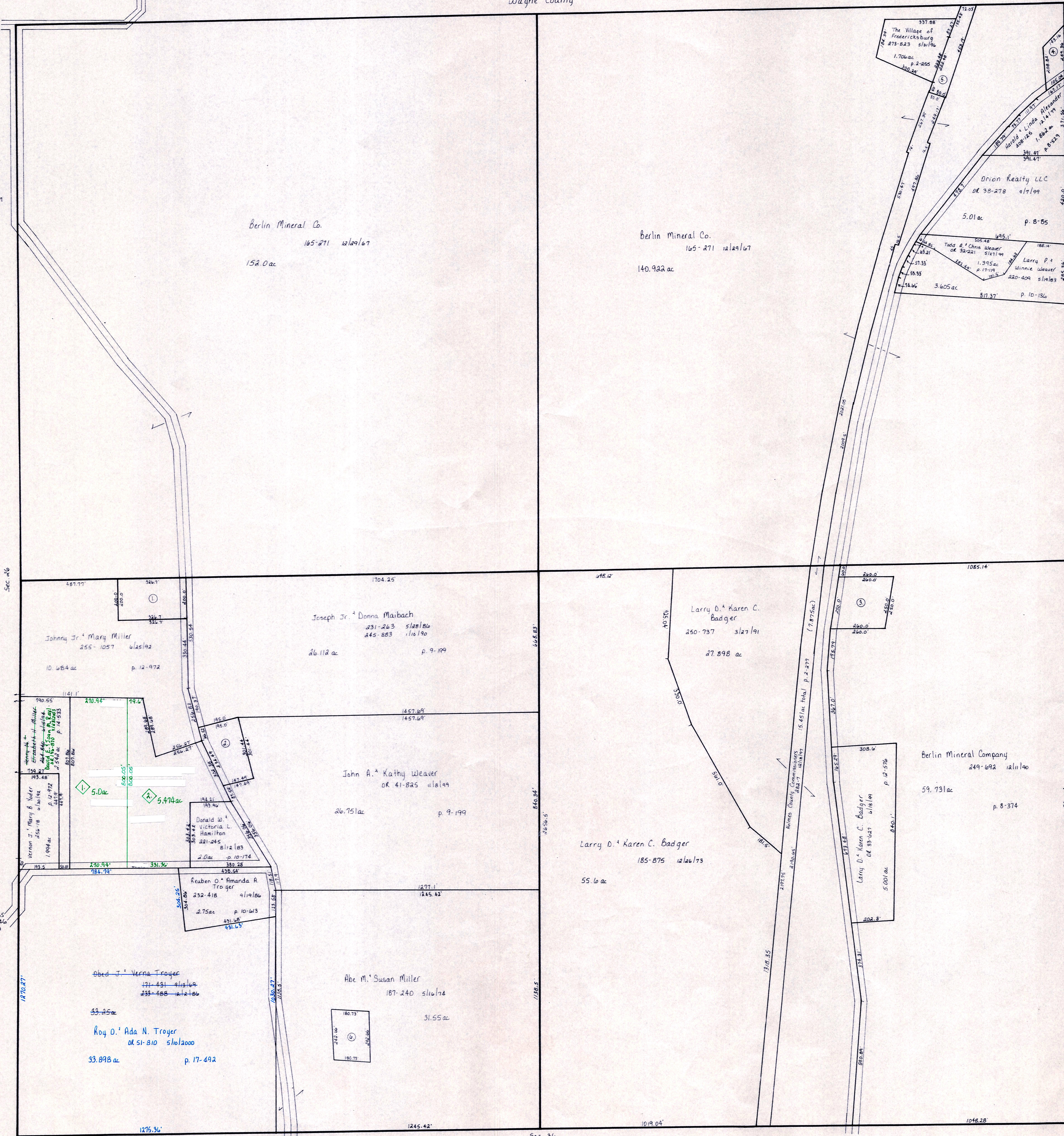


Wayne County

T.H. 563
Old T.H. 247
60' R/W

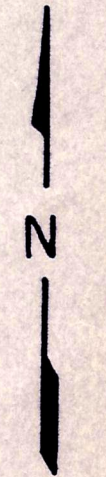
T.H. 566
Old T.H. 247
60' R/W

C.H. 192
60' R/W



Salt Creek Township

Saw Mill Subdivision PR-33
Plat 18-533 Platted 2/25/2003



LET IT BE KNOWN, THIS MAP HAS BEEN PREPARED AS A REFERENCE GUIDE TO PROPERTY OWNERSHIP. WE BELIEVE THIS INFORMATION TO BE CORRECT AND CURRENT. HOWEVER, IT IS NOT INTENDED FOR ANY LEGAL USE, WHETHER IT BE IN SALES, TRANSFERS, TRADES, LEASES OF ANY TYPE, ETC. AND DO NOT ACCEPT RESPONSIBILITY FOR ERRORS OF ANY NATURE OR OMISSIONS CONTAINED HEREIN.

T-14, R-13, Sec. 25
Prairie Township

HOLMES CO. OHIO
SCALE: 1" = 200'

PR-33