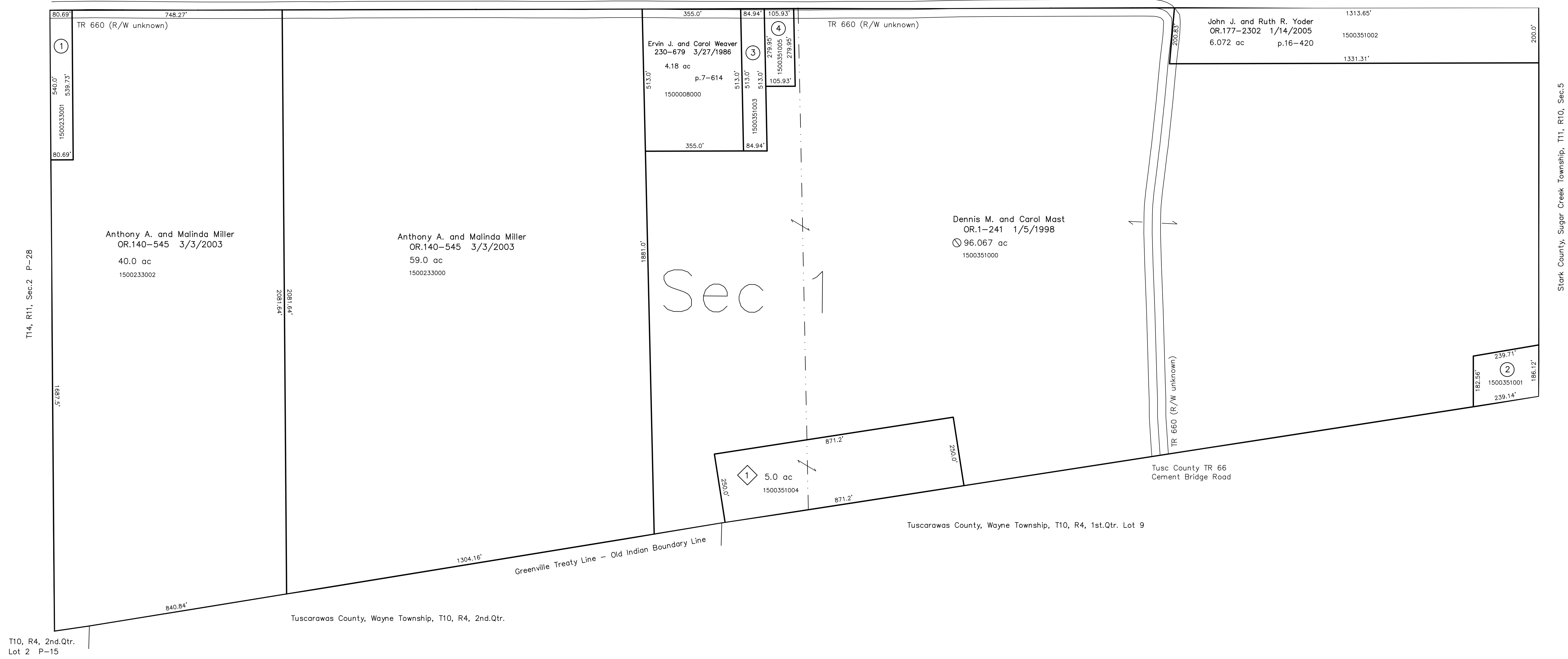
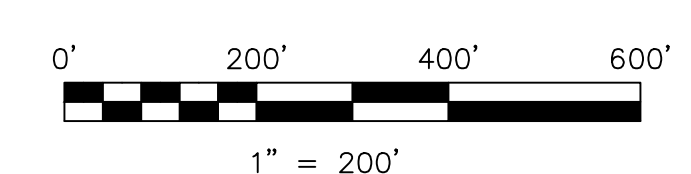


- 1500233001 ① Ray J. and Jacob J.J. Miller  
OR.49-566 3/29/2000  
1.0 ac p.14-697
- 1500351001 ② John W. and Fannie E. Miller  
287-591 2/15/1995  
1.0 ac p.14-731
- 1500351003 ③ Lester E. Weaver  
OR.191-2082 9/12/2006  
1.0 ac p.16-487
- 1500351005 ④ Lester E. Weaver  
OR.191-2078 9/12/2006  
0.681 ac p.19-800

T15, R11, Sec.36 P-32



Vern Subdivision  
 Plat 19-301 Platted 2/3/2005  
 1500351004 Vern L. and Rachel D. Schlabach  
 OR.178-3227 3/22/2005  
 5.0 ac p.19-301



LET IT BE KNOWN, THIS MAP HAS BEEN PREPARED AS A REFERENCE GUIDE TO PROPERTY OWNERSHIP. WE BELIEVE THIS INFORMATION TO BE CORRECT AND CURRENT, HOWEVER IT IS NOT INTENDED FOR ANY LEGAL USE, WHETHER IT BE IN SALES, TRANSFERS, TRADES, LEASES OF ANY TYPE, ETC., AND DO NOT ACCEPT RESPONSIBILITY FOR ERRORS OF ANY NATURE OR OMISSIONS CONTAINED HEREIN.

new survey required for next transfer

Last Revision: 9/12/2006  
**T-14, R-11, Sec.1**  
**Paint Twp.**  
**Holmes County, Ohio**  
**P-31**