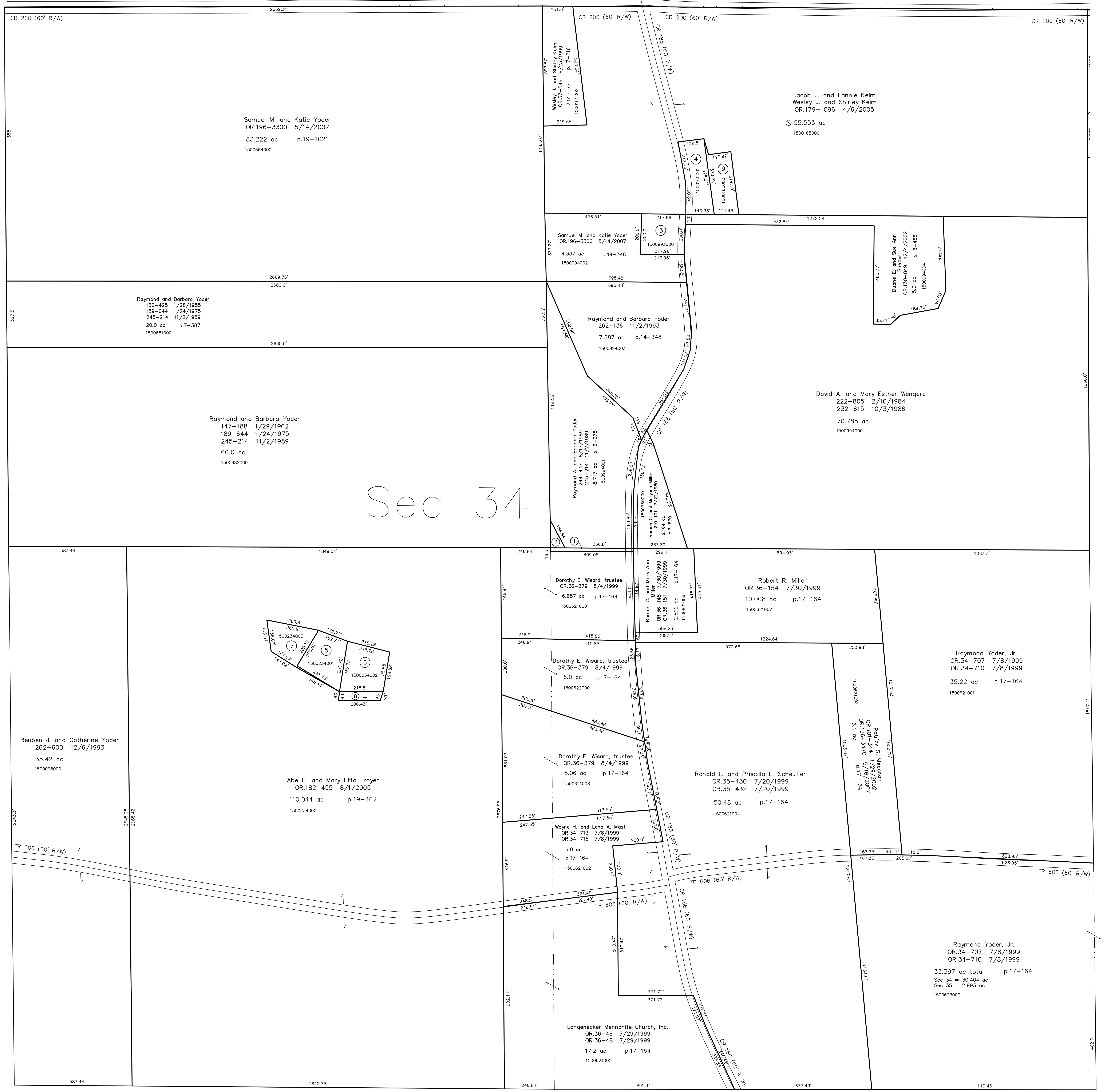


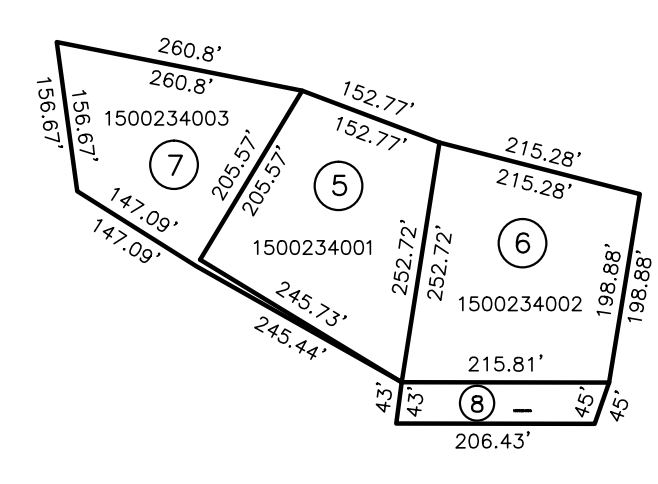
- 1500682000 (1) Raymond A. and Barbara A. Yoder
147-188 1/29/1962
189-644 1/24/1975
245-214 11/2/1989
0.159 ac
- 1500682002 (2) Raymond A. and Barbara A. Yoder
147-188 1/29/1962
189-644 1/24/1975
245-214 11/2/1989
0.11 ac
- 1500993000 (3) Samuel M. and Katie Yoder
OR.196-3300 5/14/2007
1.0 ac p.10-198
- 1500165001 (4) Noah H. and Edna Mae Miller
248-205 8/9/1990
1.067 ac p.12-492
- 1500234001 (5) Duane R. and Karen Sue Miller
259-363 3/31/1993
1.014 ac p.14-182
- 1500234002 (6) Nelson J. and Lydia Ann Kline
283-806 3/21/1994
OR.78-47 6/13/2001
1.108 ac p.14-463
- 1500234003 (7) Duane R. and Karen Sue Miller
OR.61-801 11/6/2000
0.826 ac p.17-684
- 1500234004 (8) Nelson J. and Lydia Ann Kline
OR.77-531 6/8/2001
OR.78-47 6/13/2001
0.209 ac p.17-684
- 1500165003 (9) Noah H. and Edna Mae Miller
OR.151-555 6/4/2003
0.865 ac p.18-634

T-15, R-11, Sec.27 P-27

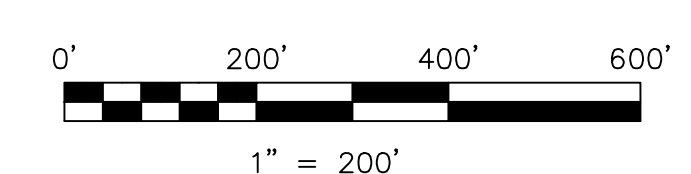


T-15, R-11, Sec.33 P-23

T-15, R-11, Sec.35 P-29



T-14, R-11, Sec.3 P-25



LET IT BE KNOWN, THIS MAP HAS BEEN PREPARED AS A REFERENCE GUIDE TO PROPERTY OWNERSHIP. WE BELIEVE THIS INFORMATION TO BE CORRECT AND CURRENT; HOWEVER IT IS NOT INTENDED FOR ANY LEGAL USE, WHETHER IT BE IN SALES, TRANSFERS, TRADES, LEASES OF ANY TYPE, ETC., AND DO NOT ACCEPT RESPONSIBILITY FOR ERRORS OF ANY NATURE OR OMISSIONS CONTAINED HEREIN.

new survey required for next transfer

Last Revision: 5/16/2007
T-15, R-11, Sec.34
Paint Twp.
Holmes County, Ohio

P-26