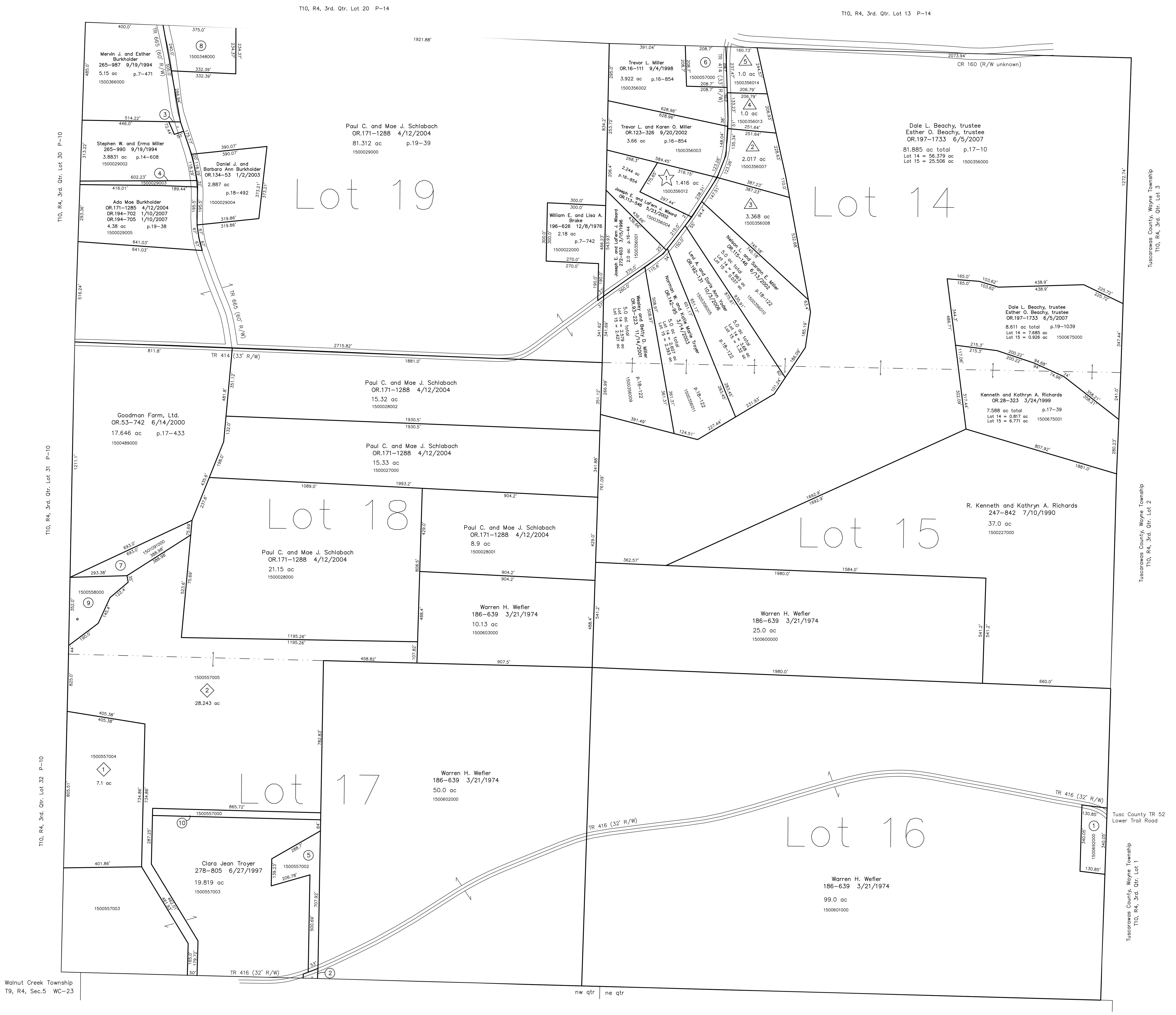


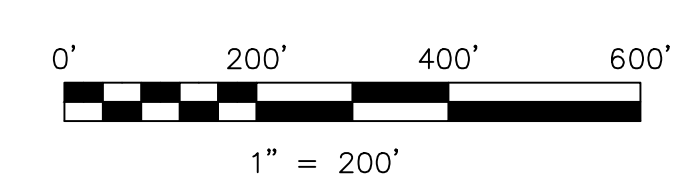
- 1500692000 ① Milo Jr. and Leah Yoder  
OR 21-041 12/8/1998  
1.0 ac
- 1500557001 ② Troy E. and Linda K. Phillips  
265-552 8/15/1994  
0.064 ac p.14-581
- 1500029001 ③ Mervin J. and Esther Burkholder  
265-987 9/19/1994  
0.0799 ac p.14-607
- 1500029003 ④ Stephen W. and Erma Miller  
OR 97-685 12/27/2001  
0.329 ac p.18-164
- 1500557002 ⑤ Richard A. Phillips and Shawn Davis  
OR 92-557 11/7/2001  
OR 171-2863 4/28/2004  
1.571 ac p.18-114
- 1500057000 ⑥ Fannie May Garber  
207-140 8/29/1979  
OR 16-440 9/11/1998  
1.0 ac p.4-74
- 1501091000 ⑦ Goodman Farm, Ltd.  
OR 53-742 6/14/2000  
1.93 ac p.17-433
- 1500348000 ⑧ Robert E. and Iva Hershberger  
214-856 10/15/1981  
1.9 ac p.7-507
- 1500558000 ⑨ Clara Jean Troyer  
278-805 6/27/1997  
1.493 ac
- 1500557000 ⑩ Clara Jean Troyer  
278-805 6/27/1997  
1.0 ac



Walnut Creek Township  
T9, R4, Sec.5 WC-23

Walnut Creek Township T9, R4, Sec.4 WC-29

- ① Foggy Bottom  
Plat 16-81 Platted 9/20/2001
- ② Troyer Farm View Subdivision  
Plat 19-1211 Platted 12/18/2007
- ③ Foggy Bottom Subdivision Replat & Renumbering of Lot 1  
Plat 19-873 Platted 11/29/2006
- ④ Wards Hills Music Subdivision  
Plat 19-148 Platted 8/10/2004
- ⑤ Jeremy W. and Melissa S. Immel  
OR 0174-2662 8/30/2004  
1.416 ac p.19-148
- ⑥ Willis W. and Ann E. Troyer  
OR 192-1667 10/20/2006  
2.017 ac p.18-81
- ⑦ Trail Construction, Inc.  
OR 189-52 5/22/2006  
3.368 ac p.18-81
- ⑧ Paul E. Most  
OR 193-1818 12/8/2006  
1.0 ac p.19-873
- ⑨ Rose Ann Miller  
OR 193-1822 12/8/2006  
1.0 ac p.19-873
- ⑩ Clara Jean Troyer  
278-805 6/27/1997  
7.1 ac p.19-1211
- ⑪ Clara Jean Troyer  
278-805 6/27/1997  
28.243 ac p.19-1211



LET IT BE KNOWN, THIS MAP HAS BEEN PREPARED AS A REFERENCE GUIDE TO PROPERTY OWNERSHIP. WE BELIEVE THIS INFORMATION TO BE CORRECT AND CURRENT; HOWEVER IT IS NOT INTENDED FOR ANY LEGAL USE, WHETHER IT BE IN SALES, TRANSFERS, TRADES, LEASES OF ANY TYPE, ETC., AND DO NOT ACCEPT RESPONSIBILITY FOR ERRORS OF ANY NATURE OR OMISSIONS CONTAINED HEREIN.

new survey required for next transfer

Last Revision: 12/18/2007  
**T-10, R-4, 3rd. Qtr.**  
**Lots 14,15,16,17,18,19**  
**Paint Twp.**  
**Holmes County, Ohio**

**P-13**