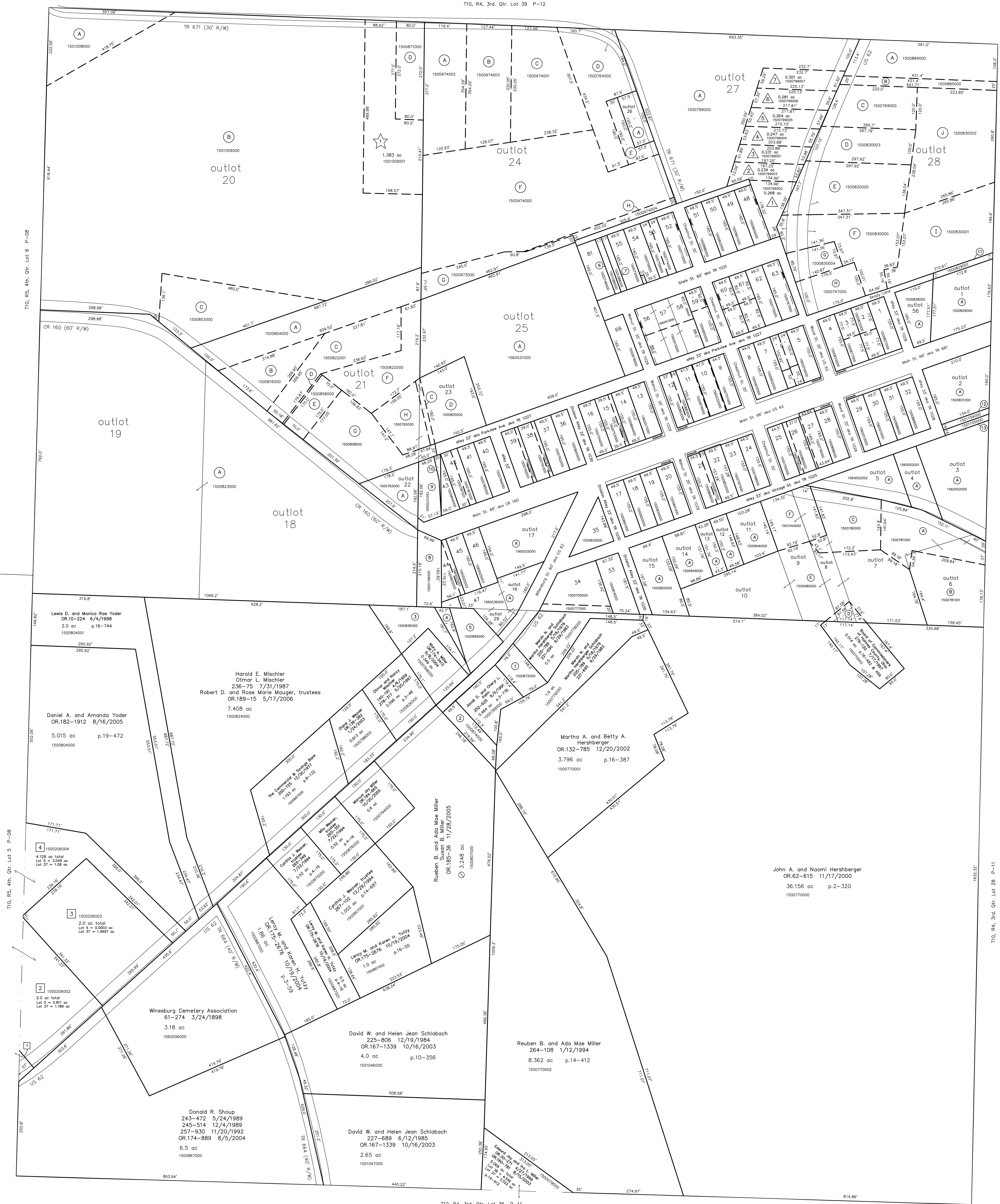
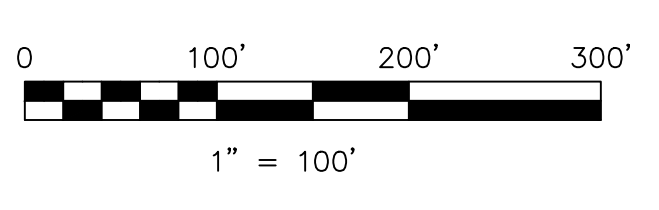


★ Dan J. Keim Allotment No.1  
Plat 15-142 Platted 9/3/1997  
▽ Rosehill Subdivision  
Plat 19-645 Platted 2/28/2006



T10, R4, 3rd. Qtr. Lot 27 P-11

T10, R4, 3rd. Qtr. Lot 28 P-11



LET IT BE KNOWN, THIS MAP HAS BEEN PREPARED AS A REFERENCE GUIDE TO PROPERTY OWNERSHIP. WE BELIEVE THIS INFORMATION TO BE CORRECT AND CURRENT, HOWEVER IT IS NOT INTENDED FOR ANY LEGAL USE, WHETHER IT BE IN SALES, TRANSFERS, TRADED, LEASES OF ANY TYPE, ETC., AND DO NOT ACCEPT RESPONSIBILITY FOR ERRORS OF ANY NATURE OR OMISSIONS CONTAINED HEREIN.

○ new survey required  
○ for next transfer

Last Revision: 11/27/2007

**Winesburg Village**  
**\*unincorporated\***  
**T-10, R-4, 3rd. Qtr. Lots 37,38**  
**Paint Twp.**  
**Holmes County, Ohio**

**P-11A**