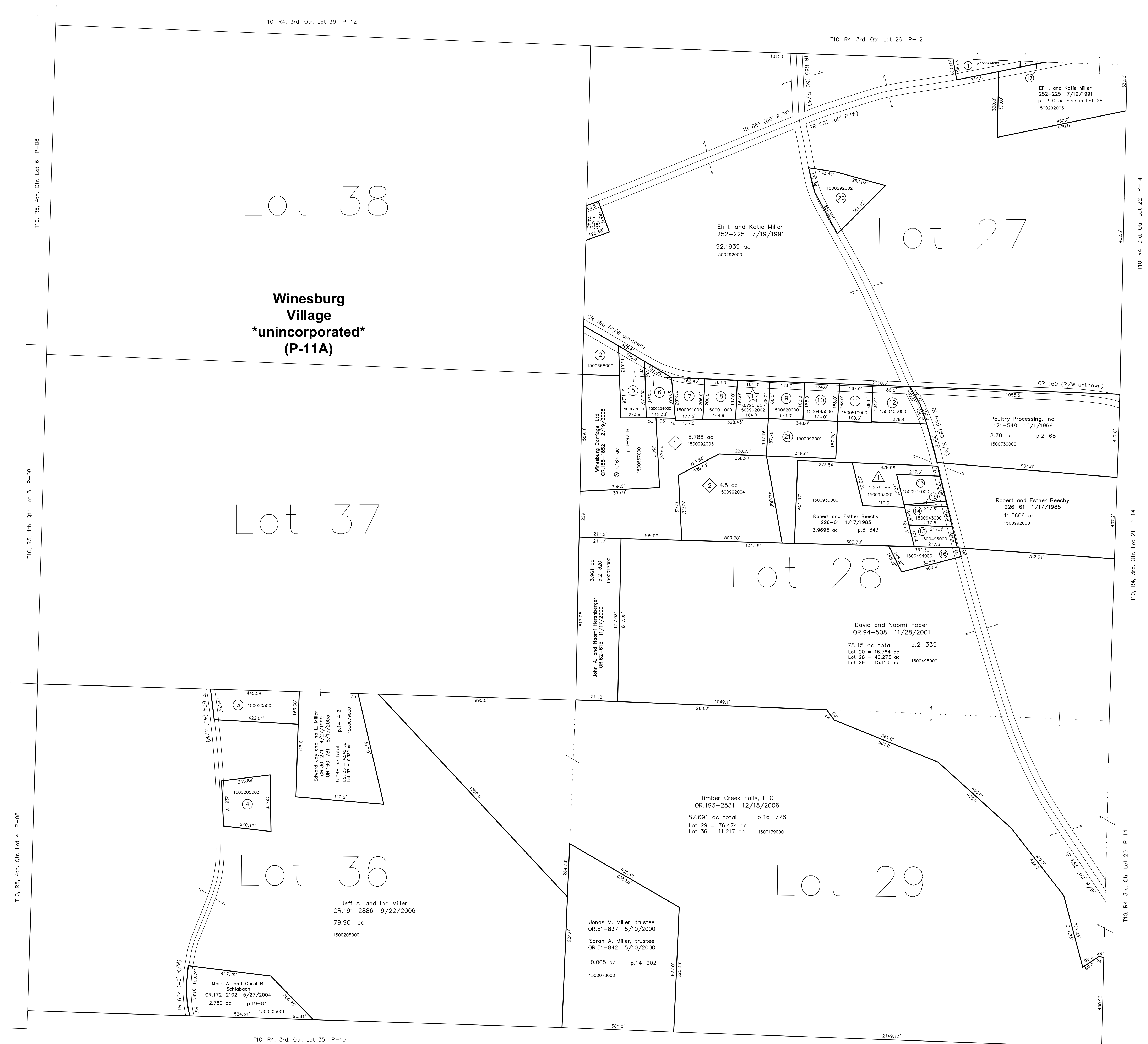
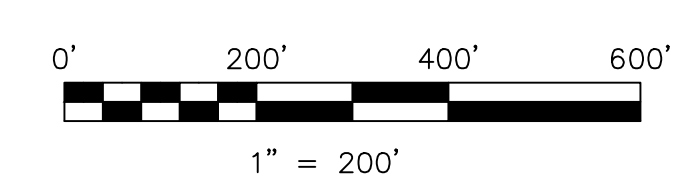


- 1500294000 ① Eli I. and Katie Miller
252-225 7/19/1991
Part of 5.0 ac
- 1500668000 ② Winesburg Carriage, Ltd.
OR.185-1852 12/19/2005
0.273 ac
- 1500205002 ③ Daniel A. and Amanda Yoder
OR.188-1746 5/2/2006
1.574 ac p.19-892
- 1500205003 ④ Daniel A. and Amanda Yoder
OR.188-1746 5/2/2006
1.413 ac p.19-892
- 1500177000 ⑤ Robert L. and Melba L. Kendle, trustees
OR.5-302 3/20/1998
0.943 ac p.7-628
- 1500254000 ⑥ John J. and Mattie M. Miller
OR.8-889 4/13/1998
0.769 ac p.4-175
- 1500991000 ⑦ Jason A. and Juliana Yoder
OR.174-516 8/2/2004
0.7294 ac p.10-167
- 1500011000 ⑧ Robert Allen and Esther Beechy
174-718 9/22/1970
197-825 5/6/1977
0.759 ac p.5-52
- 1500620000 ⑨ Mildred M. Whitmer, trustee
OR.19-687 11/4/1998
0.751 ac p.8-13
- 1500493000 ⑩ Dan E. and Anna Chupp
OR.167-256 10/29/2003
0.751 ac p.8-13
- 1500510000 ⑪ John D. and Linda Chupp
OR.168-92 11/7/2003
0.7242 ac p.8-598
- 1500405000 ⑫ Marion and Linda Pacula
199-9 7/27/1977
236-425 9/10/1987
236-427 9/10/1987
1.0 ac p.4-24
- 1500934000 ⑬ Carole J. Carter
276-549 12/20/1996
0.6833 ac p.8-825
- 1500643000 ⑭ Keith L. Beechy
Kris Andrea F. Stoltzfus
OR.195-3416 4/5/2007
0.502 ac p.7-276
- 1500495000 ⑮ Charles L. Jr. and Linda Sigrist
189-83 10/31/1974
OR.0128-512 10/25/2002
0.502 ac p.7-276
- 1500494000 ⑯ Charles L. Jr. and Linda Sigrist
188-580 9/6/1974
OR.126-512 10/25/2002
0.68 ac p.7-326
- 1500294001 ⑰ Eli I. and Katie Miller
252-225 7/19/1991
Part of 5.0 ac
- 1500292001 ⑱ Tri County Professional Associates, LLC
OR.168-2168 12/5/2003
0.3541 ac p.14-285
- 1500934001 ⑲ Keith L. Beechy
Kris Andrea F. Stoltzfus
OR.195-3416 4/5/2007
0.069 ac p.16-607
- 1500292002 ⑳ Steven L. and Marilyn E. Miller
OR.44-335 12/23/1999
1.452 ac p.17-342
- 1500992001 ㉑ Louis B. and Suzanne I. McFadden
236-530 9/24/1997
1.5 ac p.10-821



- ★ Beechy's Allotment No.1
Plat 2-216 Platted 7/24/1989
- 1500992002 ★ Richard A. and Peggy L. Beechy
244-213 7/24/1989
0.725 ac p.2-216
- △ Beechy's Allotment No.2
Plat 15-148 Platted 10/16/1997
- 1500933001 △ Brian L. and Beth Ann Beechy
280-438 10/20/1997
1.279 ac p.15-148
- ◇ Beechy Ridge Subdivision
Plat 19-668 Platted 4/6/2006
- 1500992003 ◇ Robert and Esther Beechy
OR.190-842 7/7/2006
5.788 ac p.19-668
- 1500992004 ◇ Melvin R. and Jewell Bontrager
OR.192-2977 11/6/2006
4.5 ac p.19-668



LET IT BE KNOWN, THIS MAP HAS BEEN PREPARED AS A REFERENCE GUIDE TO PROPERTY OWNERSHIP. WE BELIEVE THIS INFORMATION TO BE CORRECT AND CURRENT; HOWEVER IT IS NOT INTENDED FOR ANY LEGAL USE, WHETHER IT BE IN SALES, TRANSFERS, TRADES, LEASES OR ANY TYPE, ETC., AND DO NOT ACCEPT RESPONSIBILITY FOR ERRORS OF ANY NATURE OR OMISSIONS CONTAINED HEREIN.

new survey required for next transfer

Last Revision: 4/5/2007
T-10, R-4, 3rd. Qtr.
Lots 27,28,29,36,37,38
Paint Twp.
Holmes County, Ohio

P-11