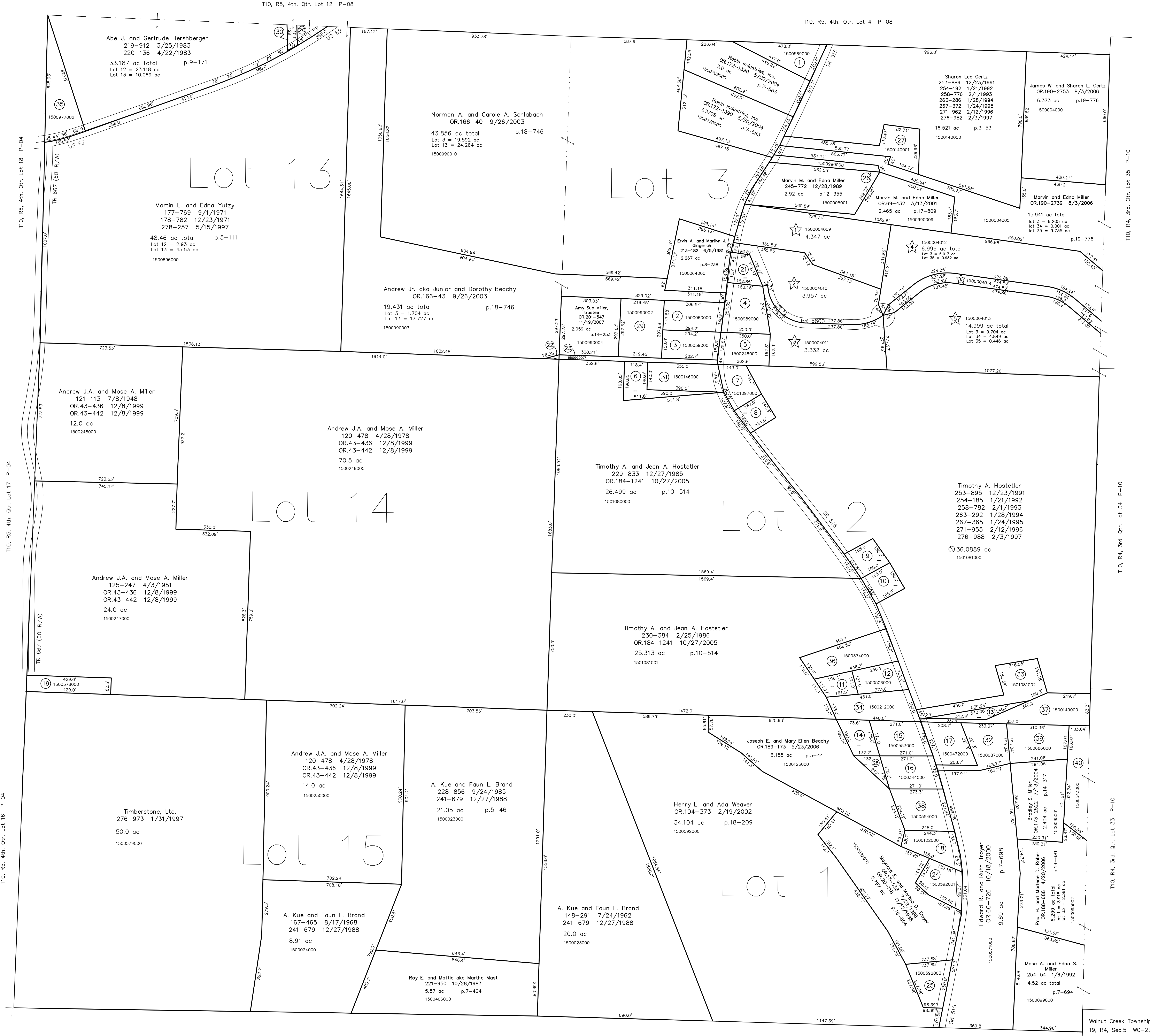
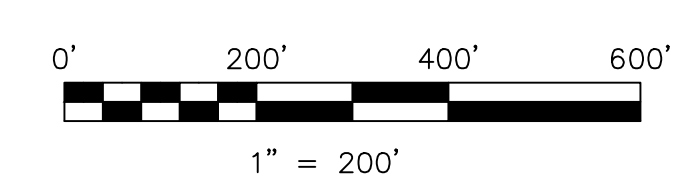


- 1500569000 ① Delores J. Troyer, trustee  
OR.83-863 12/12/2000  
1.026 ac p.2-112
- 1500060000 ② Richard and Dorothy Gerber  
185-774 12/14/1973  
1.02 ac p.7-174
- 1500059000 ③ Richard N. and Dorothy Gerber  
151-57 8/28/1963  
158-121 3/18/1966  
1.0 ac p.4-5
- 1500989000 ④ Abe A. and Darla M. Miller  
221-38 7/21/1983  
1.23 ac p.10-162
- 1500246000 ⑤ Andrew J.A. and Mose A. Miller  
196-814 12/29/1976  
OR.43-436 12/8/1999  
OR.43-442 12/8/1999  
1.005 ac p.7-760
- 1500147000 ⑥ Timothy A. and Jean A. Hostetter  
213-40 5/20/1981  
OR.184-1241 10/27/2005  
0.7241 ac p.8-743
- 1501097000 ⑦ Loren and Mary Hostetter  
127-496 2/27/1993  
130-572 3/16/1955  
0.77 ac
- 1500145000 ⑧ Mary Hostetter  
143-120 5/7/1960  
0.5 ac p.3-80
- 1500144000 ⑨ Timothy A. Hostetter  
OR.190-2697 8/3/2006  
OR.190-2698 8/3/2006  
0.56 ac
- 1500135000 ⑩ Timothy A. Hostetter  
OR.189-2694 8/3/2006  
0.57 ac
- 1500211000 ⑪ Wallace and Mary and Karen Zook  
279-704 8/29/1997  
OR.192-1837 10/23/2006  
0.455 ac p.8-143
- 1500506000 ⑫ Stanley and Roberto Sommers  
148-89 8/28/1962  
OR.169-503 12/30/2003  
0.8 ac
- 1500150000 ⑬ Elmer J. and Shirley M. Rober  
241-334 11/22/1988  
0.364 ac p.8-142
- 1500552000 ⑭ June I. Troyer  
150-98 4/14/1963  
209-571 5/29/1980  
0.58 ac p.3-668
- 1500553000 ⑮ June Troyer  
127-136 8/28/1952  
209-571 5/29/1980  
1.0 ac
- 1500344000 ⑯ Malcolm D. and Sandra L. Miller  
197-829 5/6/1977  
0.9 ac p.3-34
- 1500472000 ⑰ Johnny Schneider  
OR.186-804 4/17/2007  
OR.186-806 4/17/2007  
1.0 ac
- 1500122000 ⑱ Joseph E. and Mary Ellen Beachy  
OR.189-173 5/23/2006  
0.206 ac
- 1500578000 ⑲ Timberstone, Ltd.  
276-973 1/31/1997  
1.0 ac
- 1500997000 ⑳ Amy Sue Miller, trustee  
OR.201-547 11/19/2007  
0.192 ac p.9-210
- 1500990001 ㉑ Abe A. and Darla M. Miller  
245-593 12/8/1989  
0.492 ac p.12-345
- 1500990006 ㉒ Andrew J.A. and Mose A. Miller  
283-873 3/29/1994  
OR.43-428 12/8/1999  
OR.43-440 12/8/1999  
0.019 ac p.14-473
- 1500990007 ㉓ Andrew J.A. and Mose A. Miller  
263-875 3/29/1994  
OR.43-428 12/8/1999  
OR.43-440 12/8/1999  
0.41 ac p.14-473
- 1500592001 ㉔ Maynard E. and Martha Troyer  
OR.69-811 3/19/2001  
0.89 ac p.16-804
- 1500592003 ㉕ Ray Alan and Laura Weaver  
OR.68-818 2/23/2001  
0.898 ac p.17-790
- 1500990008 ㉖ Marvin M. and Edna Miller  
OR.69-432 3/13/2001  
0.447 ac p.17-809
- 1500140001 ㉗ Christopher J. and Kristina K. Gertz  
OR.84-315 8/13/2001  
1.475 ac p.18-46
- 1500123001 ㉘ Malcolm D. and Sandra L. Miller  
OR.153-263 6/17/2003  
0.253 ac p.18-645
- 1500990002 ㉙ Amy Sue Miller, trustee  
OR.201-547 11/19/2007  
1.5 ac p.12-848
- 1500977001 ㉚ Dwayne R. and Madlene R. Kline  
OR.184-784 10/21/2005  
0.134 ac p.19-529
- 1500146000 ㉛ Timothy A. and Jean A. Hostetter  
189-519 1/2/1975  
OR.184-1241 10/27/2005  
1.197 ac p.7-379
- 1500687000 ㉜ Paul A. and Barbara Ann Miller  
265-260 7/18/1994  
1.22 ac p.7-105
- 1501081002 ㉝ Jerry A. and Judith A. Rober  
OR.190-2703 8/3/2006  
1.5 ac p.19-775
- 1500212000 ㉞ Wallace and Mary and Karen Zook  
279-704 8/29/1997  
OR.192-1837 10/23/2006  
1.44 ac
- 1500977002 ㉟ Winesburg Hardwood Lumber Co.  
OR.184-1573 1/24/2007  
1.539 ac p.19-804
- 1500374000 ㊱ Verba A. Miller  
200-856 1/19/1978  
1.553 ac p.8-143
- 1500149000 ㊲ Elmer J. and Shirley M. Rober  
241-334 11/22/1988  
1.666 ac p.7-749
- 1500554000 ㊳ Nathan P. and Madlene R. Jones  
OR.117-186 7/9/2002  
1.26 ac p.4-179
- 1500686000 ㊴ Paul A. and Barbara Ann Miller  
265-260 7/18/1994  
1.25 ac p.7-181
- 1500543000 ㊵ Christena M. Yoder  
278-849 6/15/1997  
1.389 ac p.15-136



- ★ Deer Trace Subdivision  
Plat 2-450 Platted 9/18/2007
- 150004009 ★ Robert H. and Mary E. Klinger  
OR.200-2483 11/1/2007  
4.347 ac p.2-450
- 150004010 ★ Green Park Land LTD.  
OR.199-675 8/23/2007  
3.957 ac p.2-450
- 150004011 ★ Green Park Land LTD.  
OR.199-675 8/23/2007  
3.332 ac p.2-450
- 150004012 ★ Eaton Realty, Ltd.  
OR.201-1980 12/11/2007  
6.999 ac total p.2-450
- 150004013 ★ Eaton Realty, Ltd.  
OR.201-1980 12/11/2007  
14.999 ac total p.2-450
- 150004014 ★ Green Park Land LTD.  
OR.199-675 8/23/2007  
16.996 ac total p.2-450



new survey required  
for next transfer

Last Revision: 12/11/2007  
**T-10, R-5, 4th. Qtr.**  
**Lots 1,2,3,13,14,15**  
**Paint Twp.**  
**Holmes County, Ohio**

**P-07**