

T14, R11, Sec.5 P-19

Matchline to w pt Lot 23  
T10, R5, 4th. Qtr. Lot 25 P-03

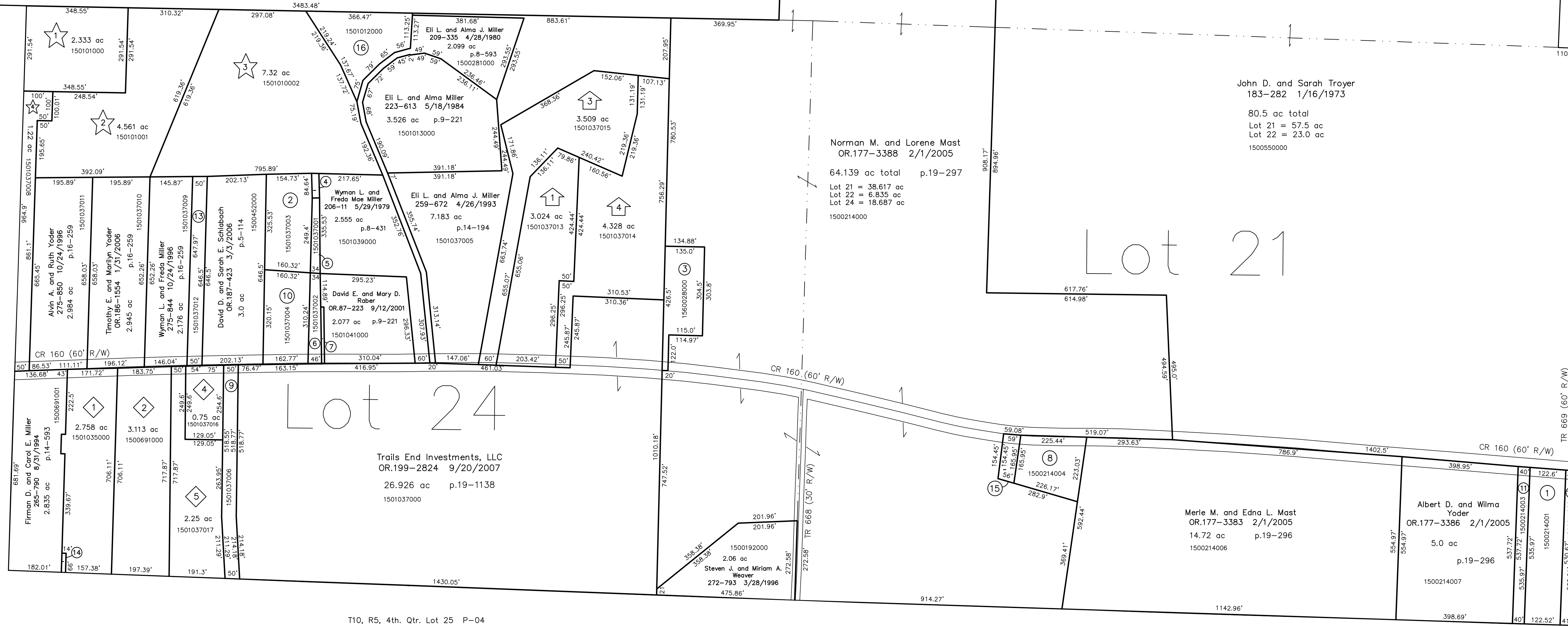
ept Lot 23

Lot 22

T10, R5, 4th. Qtr. Lot 35 P-03

T10, R5, 4th. Qtr. Lot 35 P-03

- 1500214001 ① Amiah Helping Fund  
279-956 9/16/1997  
1.5 ac p.16-177
- 1501037003 ② Wyman L. and Freda Mae Miller  
259-310 3/26/1993  
1.203 ac p.14-178
- 1560028000 ③ East Fairview School  
166-23 3/18/1968  
1.0 ac p.4-181
- 1501036000 ④ Wyman L. and Freda Miller  
224-706 8/27/1984  
0.049 ac p.10-297
- 1501037001 ⑤ Wyman L. and Freda Miller  
234-926 4/23/1987  
0.171 ac p.10-727
- 1501037002 ⑥ David E. and Mary D. Rober  
08-87-223 9/12/2001  
0.289 ac p.10-727
- 1501040000 ⑦ Trails End Investments, LLC  
09-199-2824 9/20/2007  
0.031 ac p.10-297
- 1500214004 ⑧ Merle M. and Edna L. Mast  
09-184-848 9/18/2003  
1.0 ac p.16-736
- 1501037006 ⑨ Levi B. Jr. and Lisa J. Miller  
266-508 10/29/1994  
09-180-1791 5/31/2005  
0.84 ac p.14-397
- 1501037004 ⑩ David E. and Mary D. Rober  
259-313 3/26/1993  
1.168 ac p.14-178
- 1500214003 ⑪ Amiah Helping Fund  
279-956 9/16/1997  
0.5 ac p.16-535
- 1500214002 ⑫ Orrin H. and Martha Yoder  
279-954 9/16/1997  
0.5 ac p.16-535
- 1501037012 ⑬ David D. and Sarah E. Schlabach  
09-187-423 3/3/2006  
0.743 ac p.17-59
- 1500691002 ⑭ Firman D. and Carol E. Miller  
08-51-797 5/9/2000  
0.022 ac p.17-491
- 1500214005 ⑮ Merle M. and Edna L. Mast  
09-177-3383 2/1/2005  
0.212 ac p.19-296
- 1501012000 ⑯ Eli L. and Alma Miller  
223-610 5/18/1984  
1.318 ac p.9-221



T10, R5, 4th. Qtr. Lot 25 P-04

T10, R5, 4th. Qtr. Lot 20 P-04

Eli's Subdivision No. 1  
Plat 17-875 Platted 5/24/2001

1501037013 ① Michael A. and Leah D. Yoder  
09-17-360 6/7/2001  
3.024 ac p.17-875

Eli's Subdivision No.1: First Addition  
Plat 19-512 Platted 10/5/2005

1501037015 ② Mark Austin and Elaine Jay Miller  
09-184-1501 10/31/2005  
3.509 ac p.19-512

Eli's Subdivision No.1 Replat of Lot 2  
and Additional Land  
Plat 19-562 Platted 12/7/2005

1501037014 ③ Aaron H. and Lisa Kline  
09-182-1866 8/16/2005  
09-185-2185 12/21/2005  
4.328 ac p.19-562

E & M Subdivision  
Plat 17-510 Platted 5/25/2000

1501035000 ④ Eli J. and Martha Mast  
09-88-96 9/20/2001  
2.758 ac p.17-510

E & M Subdivision First Addition  
Plat 18-115 Platted 11/8/2001

1500691000 ⑤ Eli J. and Martha Mast  
222-360 12/13/1983  
264-626 5/31/1994  
3.113 ac p.18-115

E & M Subdivision First Addition Replat  
Plat 19-1041 Platted 6/6/2007

1501037016 ⑥ Larry E. and Naomi Mast  
09-197-2282 6/12/2007  
0.75 ac p.19-1041

1501037017 ⑦ Larry E. and Naomi Mast  
09-197-2282 6/12/2007  
2.25 ac p.19-1041

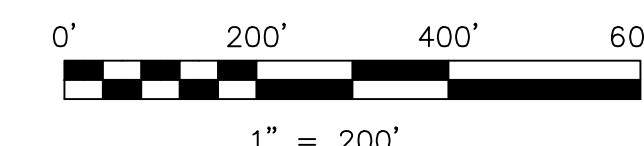
Kline Subdivision No.1  
Plat 19-487 Platted 8/31/2005

1501010000 ⑧ Ervin A. and Diane D. Schlabach  
09-183-2237 10/3/2005  
2.333 ac p.19-487

1501010001 ⑨ Ivan P. and Jolene D. Rober Shetler  
09-183-2242 10/3/2005  
09-191-256 8/17/2006  
4.561 ac p.19-487

1501010002 ⑩ Wyman L. and Freda Miller  
09-183-2240 10/3/2005  
7.32 ac p.19-487

1501037008 ⑪ Ervin A. and Diane D. Schlabach 1/2  
Ivan P. and Jolene D. Rober Shetler 1/2  
09-187-2226 3/27/2006  
09-191-256 8/17/2006  
1.22 ac p.19-487



LET IT BE KNOWN, THIS MAP HAS BEEN PREPARED AS A REFERENCE GUIDE TO PROPERTY OWNERSHIP. WE BELIEVE THIS INFORMATION TO BE CORRECT AND CURRENT; HOWEVER, IT IS NOT INTENDED FOR ANY LEGAL USE, WHETHER IT BE IN SALES, TRANSFERS, TRADES, LEASES OF ANY TYPE, ETC., AND DO NOT ACCEPT RESPONSIBILITY FOR ERRORS OF ANY NATURE OR OMISSIONS CONTAINED HEREIN.

new survey required  
for next transfer

Last Revision: 9/20/2007

**T-10, R-5, 4th. Qtr.  
Lots 21,22,ept23,24  
Paint Twp.  
Holmes County, Ohio**

**P-06**

T10, R5, 4th. Qtr. Lot 9 P-09

T10, R5, 4th. Qtr. Lot 10 P-09