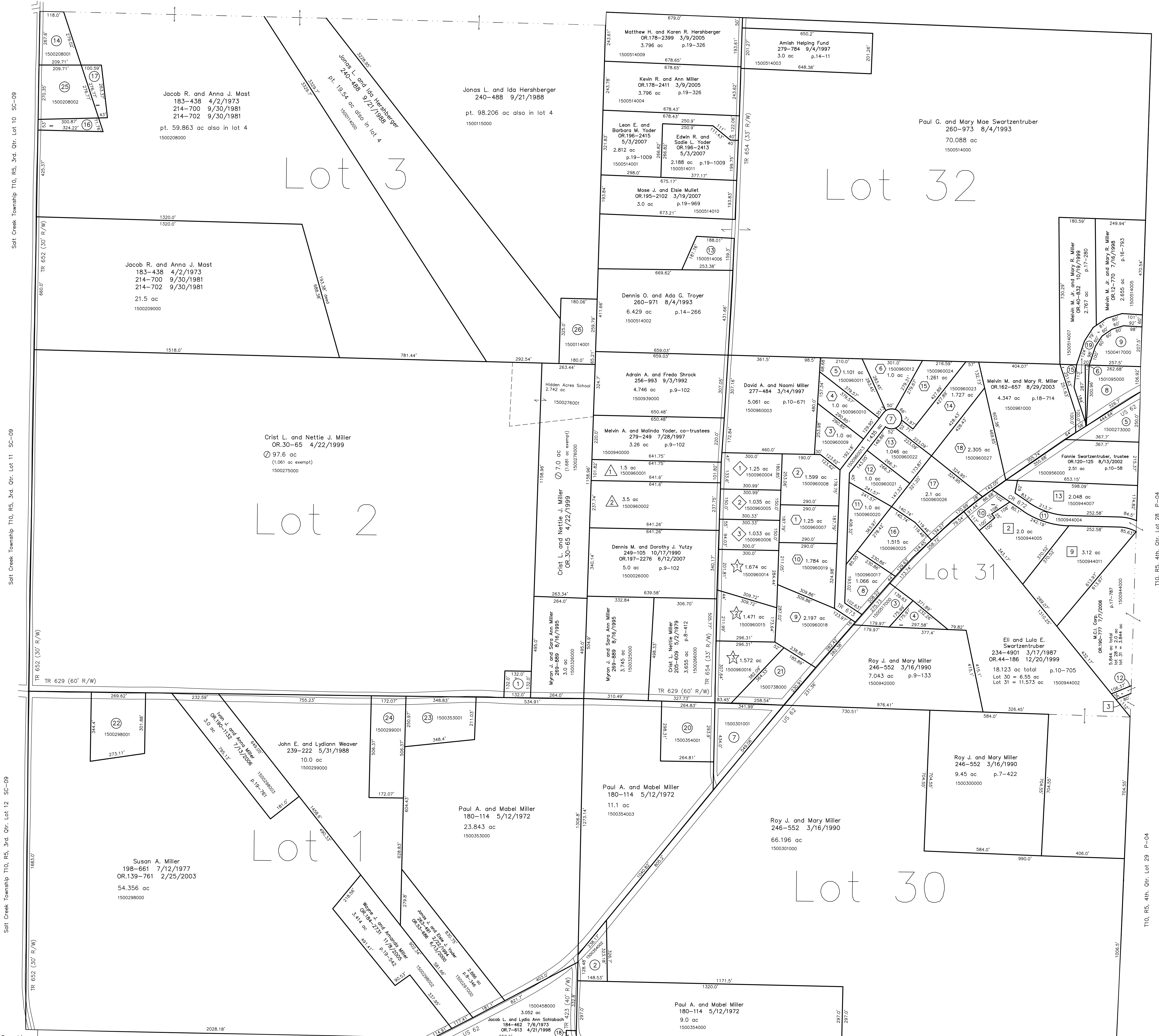


- 1500328001 ① Myron J. and Sara Ann Miller
289-889 8/16/1995
0.4 ac
- 1500354002 ② Paul A. and Mabel Miller
180-114 5/12/1971
0.75 ac
- 1500517000 ③ Joseph L. and Karen Elaine McRobie
233-802 12/26/1986
0.735 ac p.8-236
- 1500944001 ④ Joseph L. and Karen Elaine McRobie
233-802 12/26/1986
0.469 ac p.10-675
- 1500273000 ⑤ Dennis D. and Gladys C. Miller
209-38 3/4/1980
231-570 6/19/1986
1.06 ac p.8-585
- 1500958000 ⑥ Pleasant View Mennonite Church
218-460 10/7/1982
0.088 ac p.9-142
- 1500301001 ⑦ Daniel W. Steiner and Harley S. Hochstetler
OR.176-968 11/9/2004
1.704 ac p.18-238
- 1501095000 ⑧ Trustees of Amish Mennonite Conservative Church
The Pleasant View Congregation
103-461 4/28/1936
1.23 ac
- 1500417000 ⑨ Pleasant View Conservative Mennonite Church
154-31 9/17/1984
0.061 ac p.4-33
- 1500944003 ⑩ Holmes County Board of Commissioners
248-984 10/10/1990
0.17 ac
- 1500944004 ⑪ Holmes County Board of Commissioners
248-986 10/10/1990
270-164 9/6/1995
0.813 ac p.13-190 p.15-62
- 1500519004 ⑫ Dutch Brand Products, Inc.
OR.192-781 10/11/2006
0.079 ac p.14-381
- 1500514006 ⑬ Wayne G. Swartzentruber
OR.64-203 12/15/2000
0.83 ac p.16-908
- 1500208001 ⑭ Willie E. Troyer and Mary Yoder
OR.37-109 8/17/1999
1.0 ac p.17-192
- 1500961001 ⑮ Melvin M. and Mary R. Miller
OR.47-167 2/15/2000
0.333 ac p.17-386
- 1500208004 ⑯ Jacob R. and Anna J. Mast
OR.101-218 1/28/2002
0.436 ac p.18-188
- 1500208003 ⑰ Roy J. and Ida E. Mast
OR.101-216 1/28/2002
0.436 ac p.18-188
- 1500458001 ⑱ Ben J. and Erma Miller
OR.134-664 1/8/2003
0.058 ac p.18-495
- 1500514008 ⑲ Pleasant View Mennonite Church
OR.178-1092 2/17/2005
0.819 ac p.19-314
- 1500354001 ⑳ Leroy Jay and Marie Keim
286-210 10/4/1994
1.8 ac p.14-622
- 1500738000 ㉑ Holmes Laboratory, Inc.
OR.19-202 10/29/1998
1.297 ac p.9-252
- 1500298001 ㉒ Paul J. and Katie J. Miller
OR.31-337 5/11/1999
2.0 ac p.17-1000
- 1500353001 ㉓ Mark P. and Madeline Miller
253-558 11/25/1991
1.841 ac p.12-799
- 1500299001 ㉔ Jonas E. and Marietta Miller
252-434 8/7/1991
2.0 ac p.12-724
- 1500208002 ㉕ Roy J. and Ida E. Mast
OR.35-782 7/26/1999
1.365 ac p.17-192
- 1500114001 ㉖ David G. Swartzentruber
OR.50-261 4/10/2000
1.343 ac p.19-459

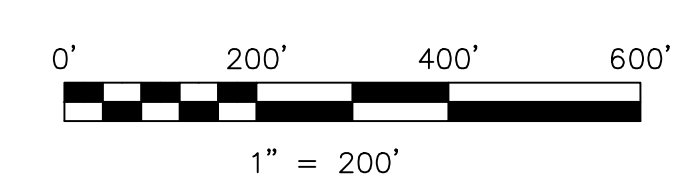


- East Holmes Industrial Park Allotment No.2
Plat 13-179 Platted 2/2/1993
- 1500944005 ② Quarter Circle L OH Investment LLC
OR.188-2287 5/8/2006
2.0 ac p.10-179
- East Holmes Industrial Park Allotment No.3
Plat 13-197 Platted 7/16/1993
- 1500944006 ③ Dutch Brand Products, Inc.
OR.192-781 10/11/2006
0.099 ac (pt. 2.0 ac total)
- East Holmes Industrial Park Allotment No.5
Plat 2-329 Platted 2/15/2001
- 1500944011 ⑧ Quarter Circle L OH Investment LLC
OR.188-2287 5/8/2006
3.12 ac p.2-329
- 1500944007 ⑬ Timberstone Ltd.
OR.18-1 2/20/2001
2.048 ac p.2-329
- Swartzentruber Allotment No.1
Plat 2-194 Platted 12/12/1986
- 1500960001 ① Edwin D. and Frances K. Troyer
233-791 12/23/1986
1.5 ac p.2-194
- 1500960002 ② Marvin A. and Clara M. Troyer
OR.188-2508 5/4/2007
3.5 ac p.2-194

- Swartzentruber Allotment No.2
Plat 13-131 Platted 4/2/1991
- 1500960004 ④ Olen J. and Mary A. Miller
280-274 10/10/1997
1.25 ac p.13-131
- 1500960005 ⑤ Raymond M. and Laurie R. Miller
OR.82-521 7/25/2001
1.035 ac p.13-131
- 1500960006 ⑥ Raymond M. and Laurie Miller
284-628 6/1/1994
1.035 ac p.13-131
- Swartzentruber Allotment No.3
Plat 2-267 Platted 1/3/1997
- 1500960007 ⑦ Mervin M. and Mary Ellen Miller
277-774 4/9/1997
1.25 ac p.2-267
- 1500960008 ⑧ Mervin M. and Mary Ellen Miller
OR.132-301 12/16/2002
OR.132-304 12/16/2002
1.599 ac p.2-267
- 1500960009 ⑨ Lonnie D. and Cindy S. Swartzentruber
OR.184-3863 11/23/2005
1.0 ac p.2-267
- 1500960010 ⑩ Junior and Fannie Swartzentruber, trustees
OR.120-127 8/13/2002
1.0 ac p.2-267
- 1500960011 ⑪ Nelson R. Troyer
OR.192-3447 11/9/2006
1.101 ac p.2-267
- 1500960012 ⑫ Samuel J. and Sandra K. Stoltzfus
OR.37-979 8/31/1999
1.0 ac p.2-267
- 1500960013 ⑬ The Holmes County Board of Commissioners
OR.183-2220 9/30/2005 p.19-511
1.435 ac p.2-267

- Swartzentruber Allotment No.3-First Addition
Plat 2-428 Platted 5/23/2006
- 1500960014 ⑭ Junior and Fannie Swartzentruber
169-34 12/21/1968
1.066 ac p.2-428
- 1500960015 ⑮ Junior and Fannie Swartzentruber
169-34 12/21/1968
2.197 ac p.2-428
- 1500960016 ⑯ Junior and Fannie Swartzentruber
169-34 12/21/1968
1.784 ac p.2-428
- 1500960017 ⑰ Junior and Fannie Swartzentruber
169-34 12/21/1968
1.0 ac p.2-428
- 1500960018 ⑱ Junior and Fannie Swartzentruber
169-34 12/21/1968
1.0 ac p.2-428
- 1500960019 ⑲ Junior and Fannie Swartzentruber
169-34 12/21/1968
1.046 ac p.2-428
- 1500960020 ⑳ Junior and Fannie Swartzentruber
169-34 12/21/1968
1.727 ac p.2-428
- 1500960021 ㉑ Junior and Fannie Swartzentruber
169-34 12/21/1968
1.261 ac p.2-428
- Swartzentruber Allotment No.3-Second Addition
Plat 2-438 Platted 11/2/2006
re-recorded Plat 2-454 Platted 12/27/2007
- 1500960022 ㉒ Pleasant View Holdings, LLC
OR.201-3872 12/31/2007
1.515 ac p.2-438
- 1500960023 ㉓ Junior and Fannie Swartzentruber
169-34 12/21/1968
2.1 ac p.2-438
- 1500960024 ㉔ Junior and Fannie Swartzentruber
169-34 12/21/1968
2.300 ac p.2-438

- Swartzentruber Allotment No.4
Plat 18-588 Platted 4/14/2003
- 1500960014 ① Raymond M. and Laurie Miller
OR.147-382 4/30/2003
1.874 ac p.18-588
- 1500960015 ② Wayne L. and Maryanna M. Weaver
OR.147-3873 4/30/2003
1.471 ac p.18-588
- 1500960016 ③ Reuben Jr. and Esther Miller
OR.148-1673 5/6/2003
1.572 ac p.18-588



LET IT BE KNOWN, THIS MAP HAS BEEN PREPARED AS A REFERENCE GUIDE TO PROPERTY OWNERSHIP. WE BELIEVE THIS INFORMATION TO BE CORRECT AND CURRENT; HOWEVER, IT IS NOT INTENDED FOR ANY LEGAL USE, WHETHER IT BE IN SALES, TRANSFERS, TRADES, LEASES OF ANY TYPE, ETC., AND DOES NOT ACCEPT RESPONSIBILITY FOR ERRORS OF ANY NATURE OR OMISSIONS CONTAINED HEREIN.

new survey required for next transfer

Last Revision: 12/31/2007
T-10, R-5,
3rd. Qtr. Lots 1,2,3
4th. Qtr. Lots 30,31,32
Paint Twp.
Holmes County, Ohio

P-01

Berlin Township
T9, R5, Sec.4
B-25

Walnut Creek Township
T9, R5, Sec.3
WC-06

Walnut Creek Township
T9, R5, 1st. Qtr. Lot 5
WC-06

Walnut Creek Township
T9, R5, 1st. Qtr.
Lot 4
WC-11

Soft Creek Township
T10, R5, 3rd. Qtr. Lot 10
SC-09

Soft Creek Township
T10, R5, 3rd. Qtr. Lot 11
SC-09

T10, R5, 4th. Qtr. Lot 33
P-02

T10, R5, 4th. Qtr. Lot 27
P-04

T10, R5, 4th. Qtr. Lot 28
P-04

T10, R5, 4th. Qtr. Lot 29
P-04