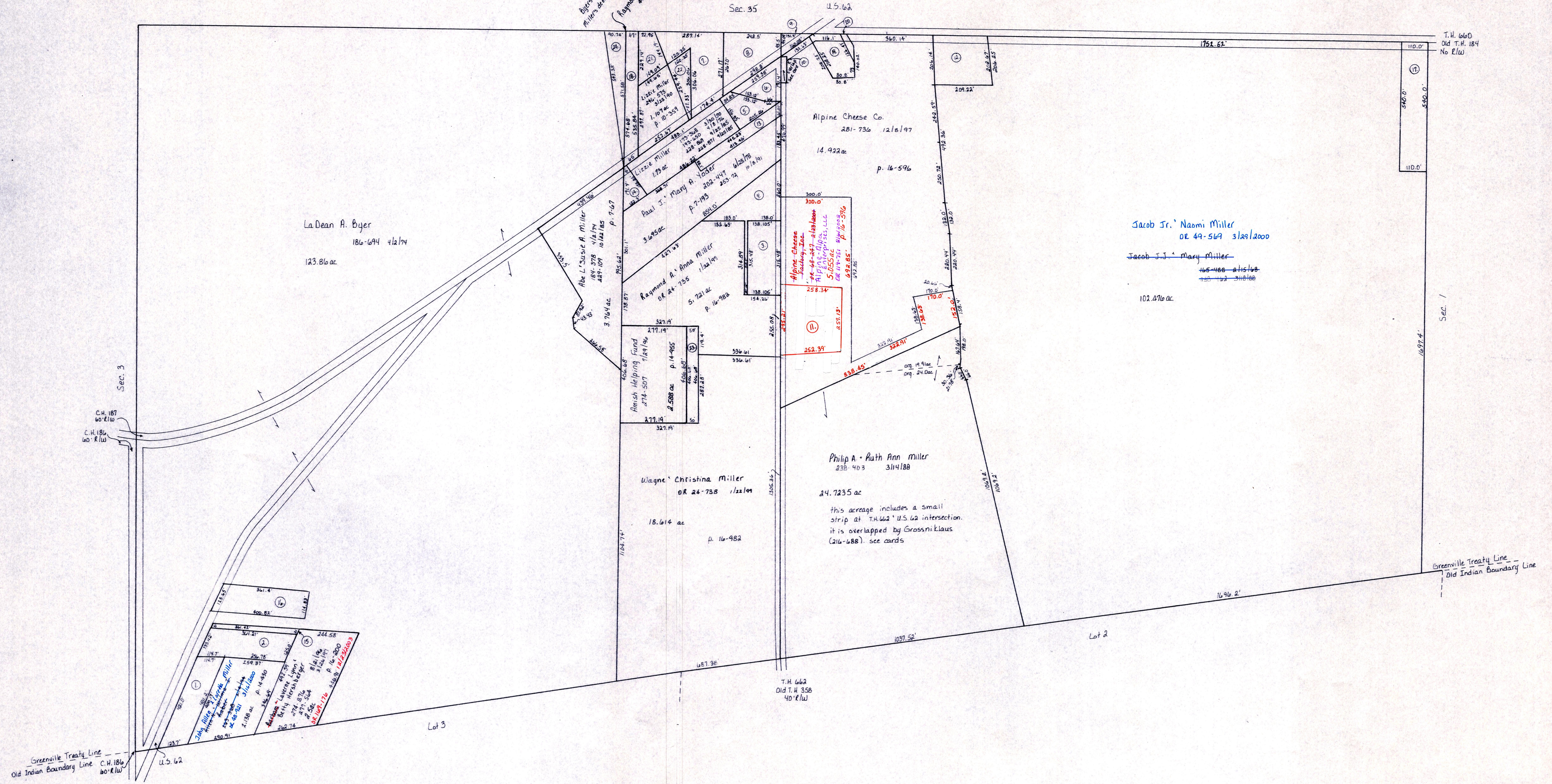


By the said boundary lines for the strip of the title of Sec. 2  
Miller and a line running N 75° E for 1000 ft. to the  
Raymond Miller's Road. All 899 calls for the same



T-14, R-11, Sec. 2  
PAINT TWP.  
SCALE: 1" = 200'

LET IT BE KNOWN, THIS MAP HAS BEEN PREPARED  
AS A REFERENCE GUIDE TO PROPERTY OWNERSHIP.  
WE BELIEVE THIS INFORMATION TO BE CORRECT  
AND CURRENT, HOWEVER, IT IS NOT INTENDED  
FOR ANY LEGAL USE, WHETHER IT BE IN SALES,  
TRANSFERS, TRADES, LEASES OF ANY TYPE, ETC.,  
AND DO NOT ACCEPT RESPONSIBILITY FOR ERRORS  
OF ANY NATURE OR OMISSIONS CONTAINED HEREIN.