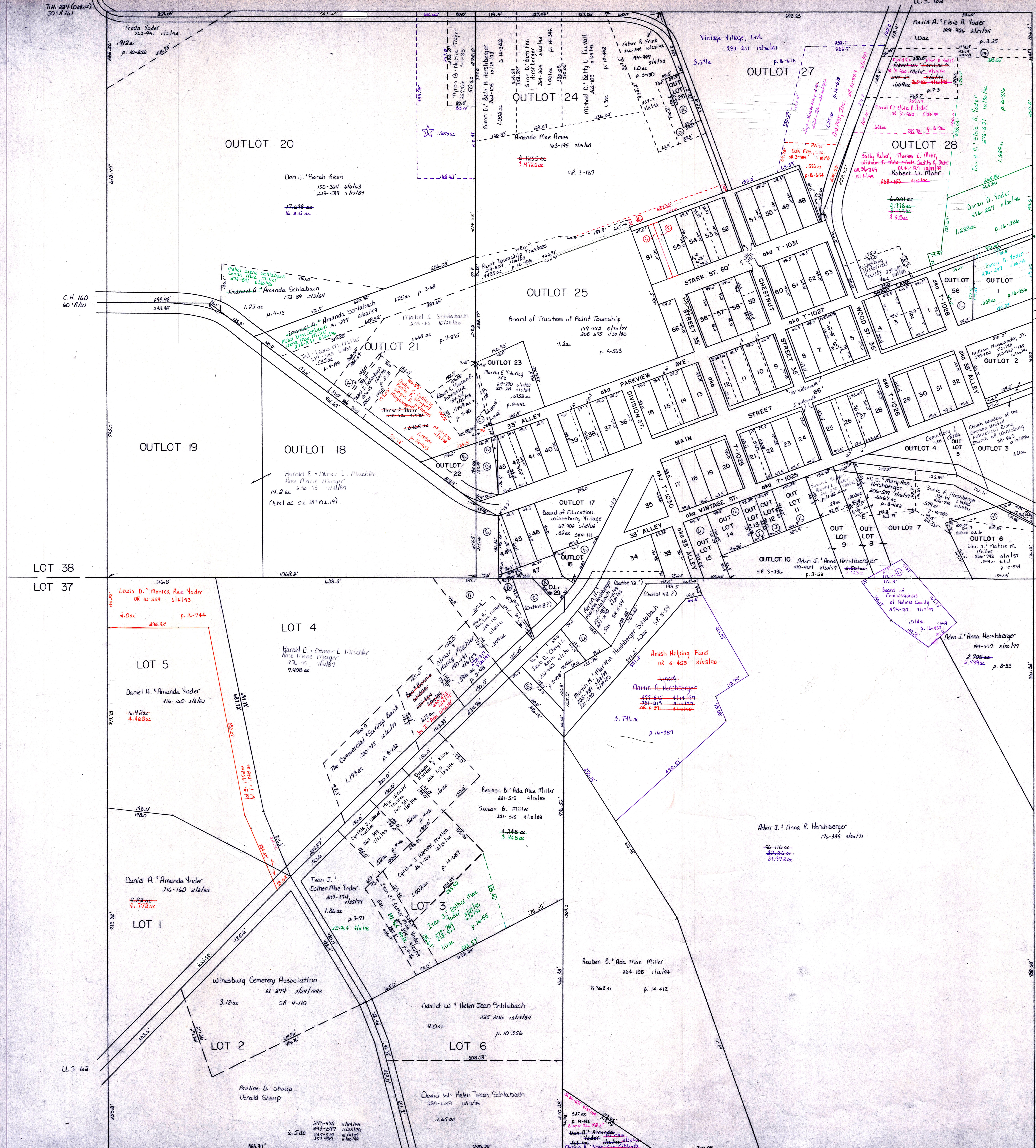


T.H. 671
T.H. 224 (Old No.)
30' R/W

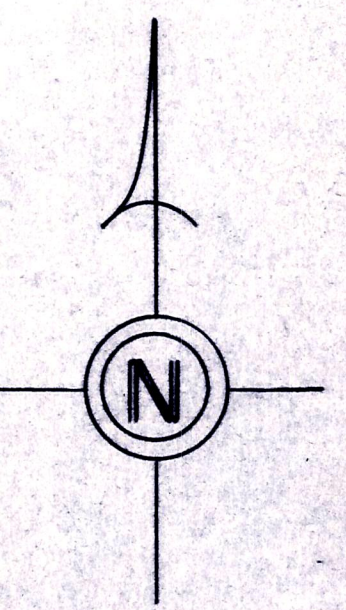


☆ Dan J. Keim Allotment No. 1
PLAT 15-18A PLATTED 4/15/97
1. David D. Yelma Keim 279-255 4/15/97

T.H. 661
T.H. 161 (Old No.)
60' R/W

C.H. 160
No. R/W

LOT 38
LOT 37



unincorporated
WINESBURG VILLAGE
T-10, R-4, 3rd. Qtr., Lots 37, 38
scale: 1" = 100'

LET IT BE KNOWN, THIS MAP HAS BEEN PREPARED AS A REFERENCE GUIDE TO PROPERTY OWNERSHIP. WE BELIEVE THIS INFORMATION TO BE CORRECT AND CURRENT, HOWEVER, IT IS NOT INTENDED FOR ANY LEGAL USE, WHETHER IT BE IN SALES, TRANSFERS, TRUSTS, LEASES OF ANY TYPE, ETC., AND DO NOT ACCEPT RESPONSIBILITY FOR ERRORS OF ANY NATURE OR OMISSIONS CONTAINED HEREIN.

P-11A

T.H. 664
T.H. 181 (Old No.)
40' R/W