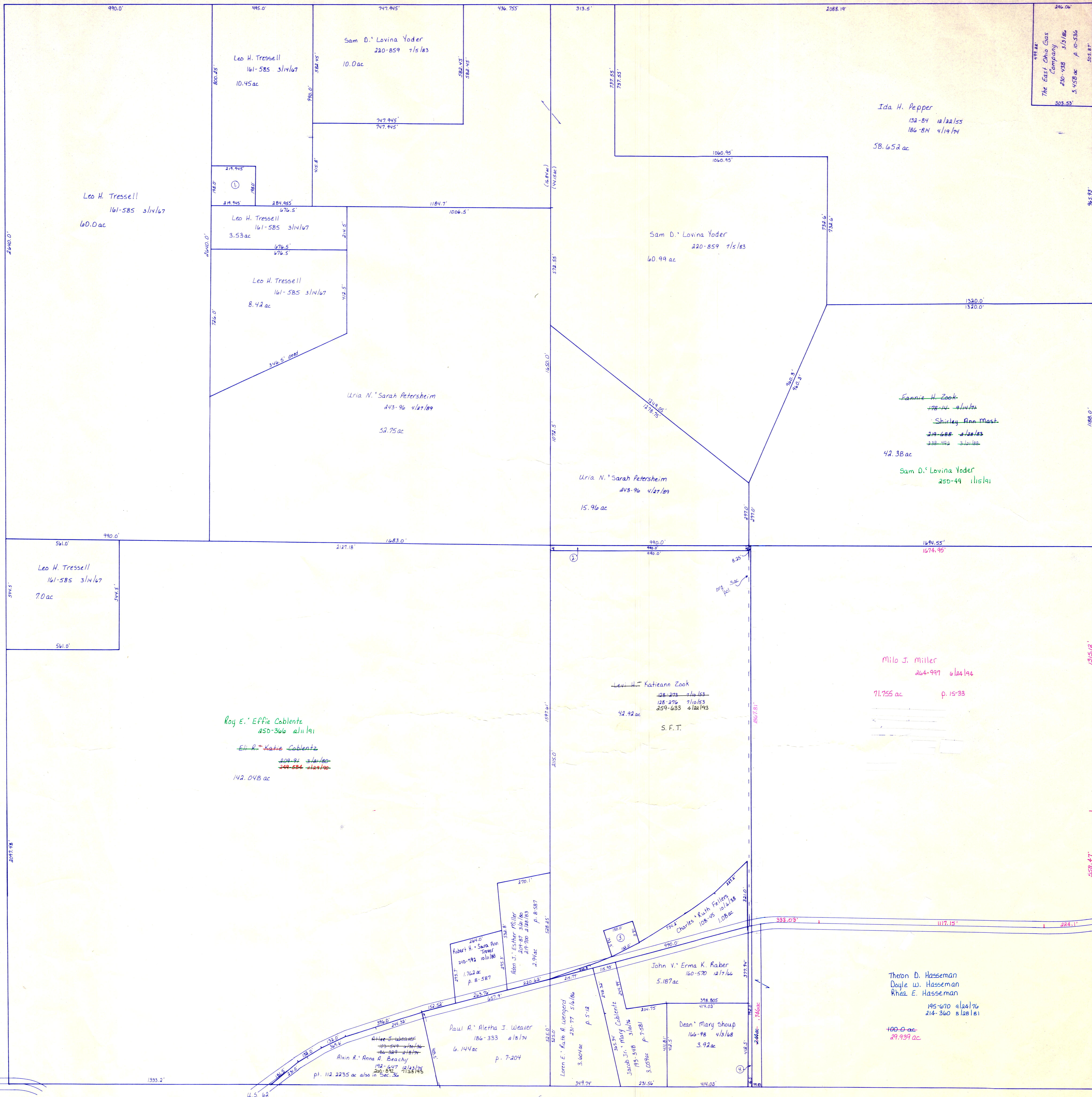


The East Ohio Gas Company
230-458 3/21/86
3.458 ac p. 10-536
303.53'



Sec. 26

Stark County

- ① Leo H. Tressell 161-585 3/14/67 10.0 ac
- ② Levi H. Kateann Zook 28-278 2/14/63, 28-276 7/16/53 42.92 ac
- ③ Wayne County Electric Cooperative, Inc. 30-64 5/26/66, Exp. 1st class 1st rate
- ④ Dean Mary Shoup 166-98 4/16/68 3.92 ac

for numbered parcels, see folder

T-15, R-11, Sec. 25
PAINT TWP.

SCALE: 1" = 200'

LET IT BE KNOWN, THIS MAP HAS BEEN PREPARED AS A REFERENCE GUIDE TO PROPERTY OWNERSHIP. WE BELIEVE THIS INFORMATION TO BE CORRECT AND CURRENT, HOWEVER, IT IS NOT INTENDED FOR ANY LEGAL USE, WHETHER IT BE IN SALES, TRANSFERS, TRADES, LEASES OF ANY TYPE, ETC., AND DO NOT ACCEPT RESPONSIBILITY FOR ERRORS OF ANY NATURE OR OMISSIONS CONTAINED HEREIN.