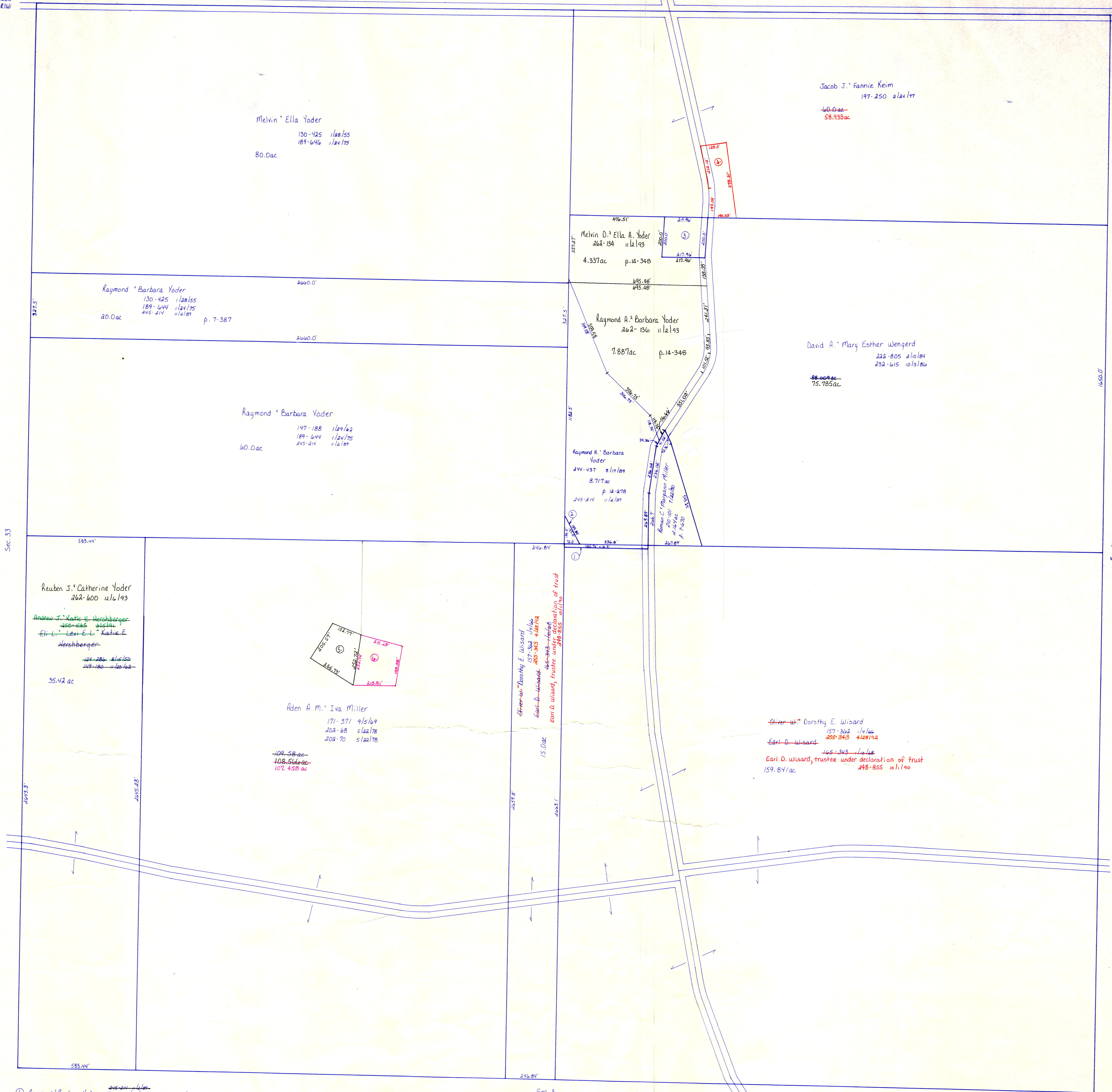


C.H. 200
60' E/W

Sec. 27

C.H. 186
60' E/W

C.H. 200
60' E/W



- ① Raymond & Barbara Yoder 130-425 1/24/55
- ② Raymond & Barbara Yoder 130-425 1/24/55
- ③ Melvin D. & Ella A. Yoder 112-193 1/24/55
- ④ Noah H. & Edna Mae Miller 216-205 1/24/55

for numbered parcels, see folder

T-15, R-11, Sec. 34
PAINT TWP.

SCALE: 1" = 200'

LET IT BE KNOWN, THIS MAP HAS BEEN PREPARED AS A REFERENCE GUIDE TO PROPERTY OWNERSHIP. WE BELIEVE THIS INFORMATION TO BE CORRECT FOR ANY LEGAL USE, WHETHER IT BE IN SALES, TRANSFERS, TRADES, LEASES OF ANY TYPE, ETC. AND DO NOT ACCEPT RESPONSIBILITY FOR ERRORS OF ANY NATURE OR OMISSIONS CONTAINED HEREIN.