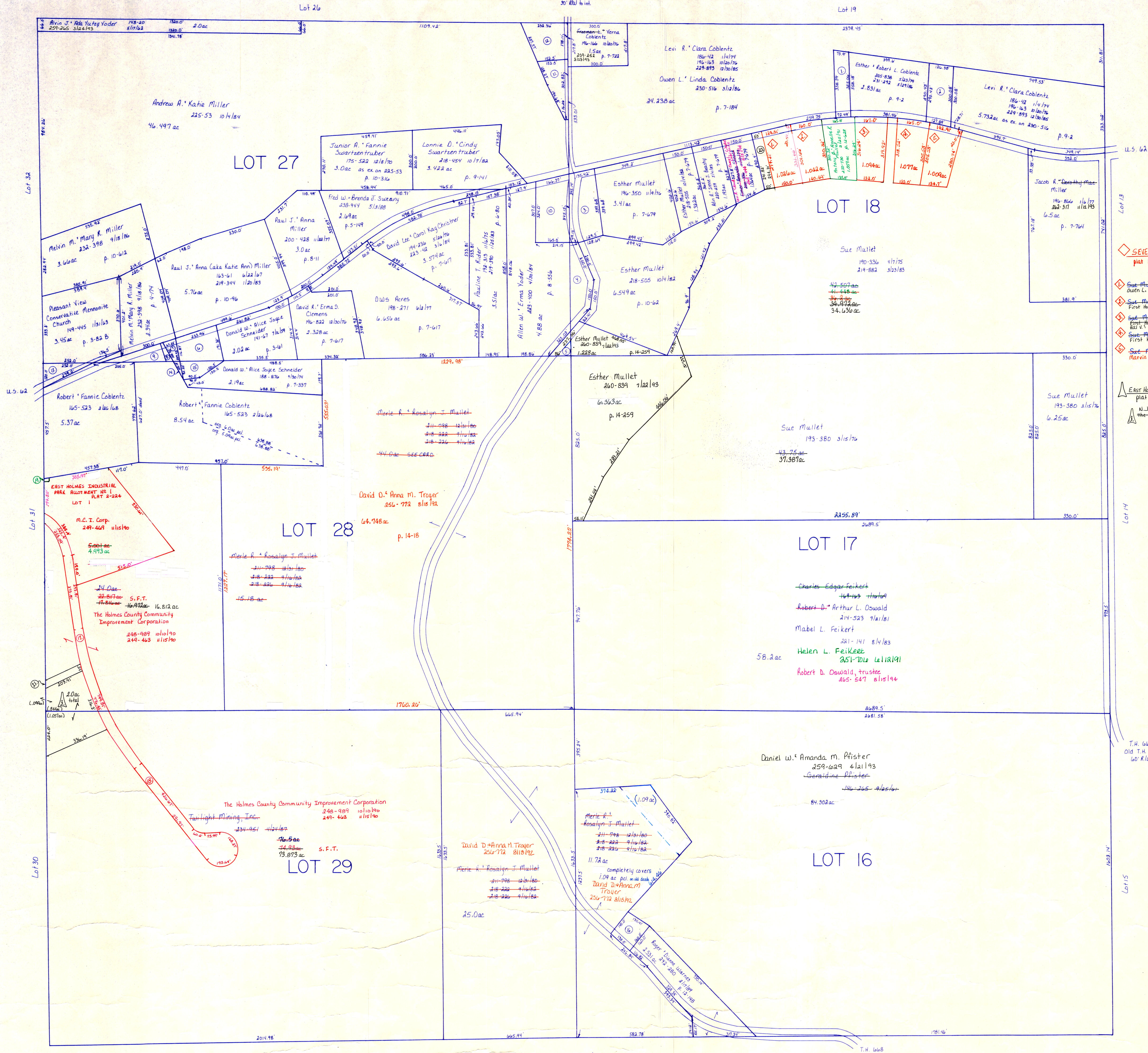


T.H. 668  
Old T.H. 178  
30' R/W to int.

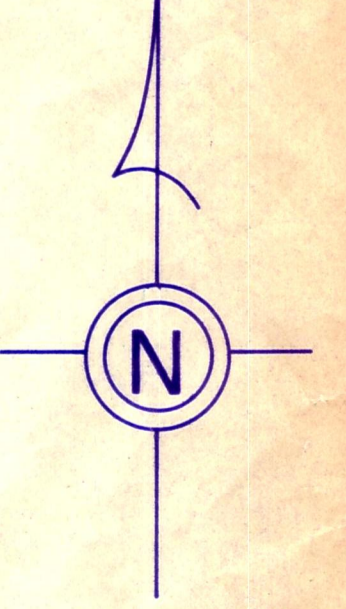


- SEVEN LICK ESTATES  
plat 13-172  
dated 11/16/14
- Sue Mullet 190-336 4/17/75  
214-882 3/23/83
- Sue Mullet 190-336 4/17/75  
214-882 3/23/83
- Sue Mullet 190-336 4/17/75  
214-882 3/23/83
- Sue Mullet 190-336 4/17/75  
214-882 3/23/83
- Sue Mullet 190-336 4/17/75  
214-882 3/23/83
- EST HOLMES INDUSTRIAL PARK PLAT No. 3  
plat 13-197  
dated 7/16/13
- N.J.M. Furniture Outlet, Inc. 260-804 7/21/13  
The Holmes County Community Improvement Corporation  
368-694 1/16/14

- ⊕ Robert L. & Esther R. Coblenz 230-514 3/12/16 555 ac p. 10-539
- ⊕ W.H.L.P. Inc 241-750 1/13/19 584 ac p. 9-2
- ⊕ Jonathan W. Sprunger & Stephen Berg 213-372 6/1/16 1,105 ac see p. 2-279
- ⊕ Allen W. Erma Yoder 283-400 4/30/14 91 ac p. 8-556
- ⊕ Sue Mullet 163-365 7/15/14 unknown ac p. 4-27
- ⊕ Donald W. Alice Joyce Schneider 186-650 1/16/13 33 ac p. 7-65
- ⊕ Donald W. Alice Joyce Schneider 186-650 1/16/13 33 ac p. 7-337
- ⊕ Robert & Fannie Coblenz 165-581 2/12/16
- ⊕ Robert & Fannie Coblenz 165-581 2/12/16
- ⊕ Jonathan W. Sprunger & Stephen Berg 213-372 6/1/16 1,107 ac p. 8-438
- ⊕ Junior R. & Fannie Swartzentruber 175-522 12/1/16 3.42 ac as ex on 225-53 p. 9-4
- ⊕ Seven Lick Products, Inc. 209-200 4/17/10 819 ac p. 9-4
- ⊕ Pleasant View Conservative Mennonite Church 194-445 11/1/10 3.45 ac p. 3-82 B
- ⊕ Donald W. Alice Joyce Schneider 186-650 1/16/13 33 ac p. 7-337
- ⊕ Donald W. Alice Joyce Schneider 186-650 1/16/13 33 ac p. 7-155
- ⊕ Roger & Dianne Warrens 207-17 2/12/14 447 ac p. 8-170
- ⊕ The Holmes County Board of Commissioners 248-966 10/10/16 1,826 ac p. 13-100
- ⊕ The Holmes County Board of Commissioners 248-966 10/10/16 1,826 ac p. 13-100
- ⊕ Fannie Swartzentruber 251-385 10/1/11 208 ac p. 13-144

for numbered parcels, see folder

T-10, R-5,  
4th. Qtr. lots 16, 17, 18  
27, 28, 29  
PAINT TWP.  
SCALE: 1" = 200'



LET IT BE KNOWN, THIS MAP HAS BEEN PREPARED AS A REFERENCE GUIDE TO PROPERTY OWNERSHIP. WE BELIEVE THIS INFORMATION TO BE CORRECT AND CURRENT, HOWEVER, IT IS NOT INTENDED FOR ANY LEGAL USE, WHETHER IT BE IN SALES, TRANSFERS, TRADES, LEASES OF ANY TYPE, ETC. AND DO NOT ACCEPT RESPONSIBILITY FOR ERRORS OF ANY NATURE OR OMISSIONS CONTAINED HEREIN.

