

M-26

M-13

T9 R8 2nd Qtr
Lot 26

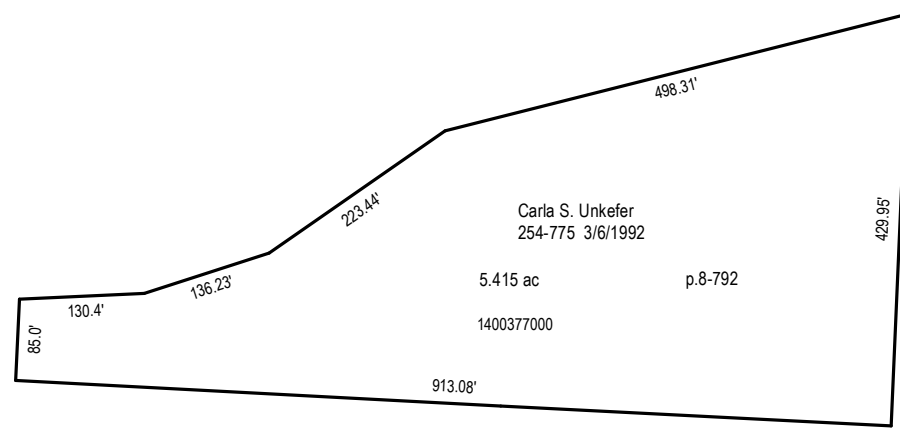
Melinda J. Epoley
OR 22-709 12/18/1998
30.0 ac
140001000

Ann E. Fleming
222-242 12/11/1983
222-247 12/11/1983
222-874 2/17/1984
222-882 2/17/1984
26.0 ac
140047000

T9 R8 2nd Qtr
Lot 5

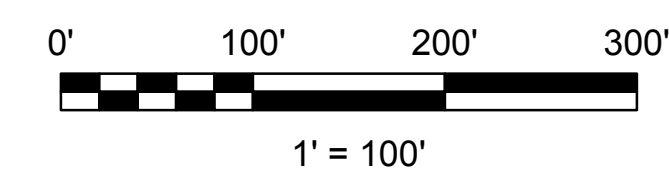
Melinda J. Epoley
OR 22-709 12/18/1998
94.585 ac
140001800

Carl S. Schaefer
254-779 38/1982
5.415 ac
140007000



M-08

M-12



LET IT BE KNOWN, THIS MAP HAS BEEN PREPARED AS A REFERENCE GUIDE TO PROPERTY OWNERSHIP. WE BELIEVE THIS INFORMATION TO BE CORRECT AND CURRENT, HOWEVER IT IS NOT INTENDED FOR ANY LEGAL USE, WHETHER IT BE SALES, TRANSFERS, TRADES, LEASES OF ANY TYPE, ETC. AND DO NOT ACCEPT RESPONSIBILITY FOR ERRORS OF ANY NATURE OR OMISSIONS CONTAINED HEREIN.

S.F.T.
new survey required
for next transfer

Last Revision: 12/30/2016



**Lots 5 & 26
2nd Qtr., T-9, R-8
Monroe Twp.
Holmes County, Ohio**

M-27