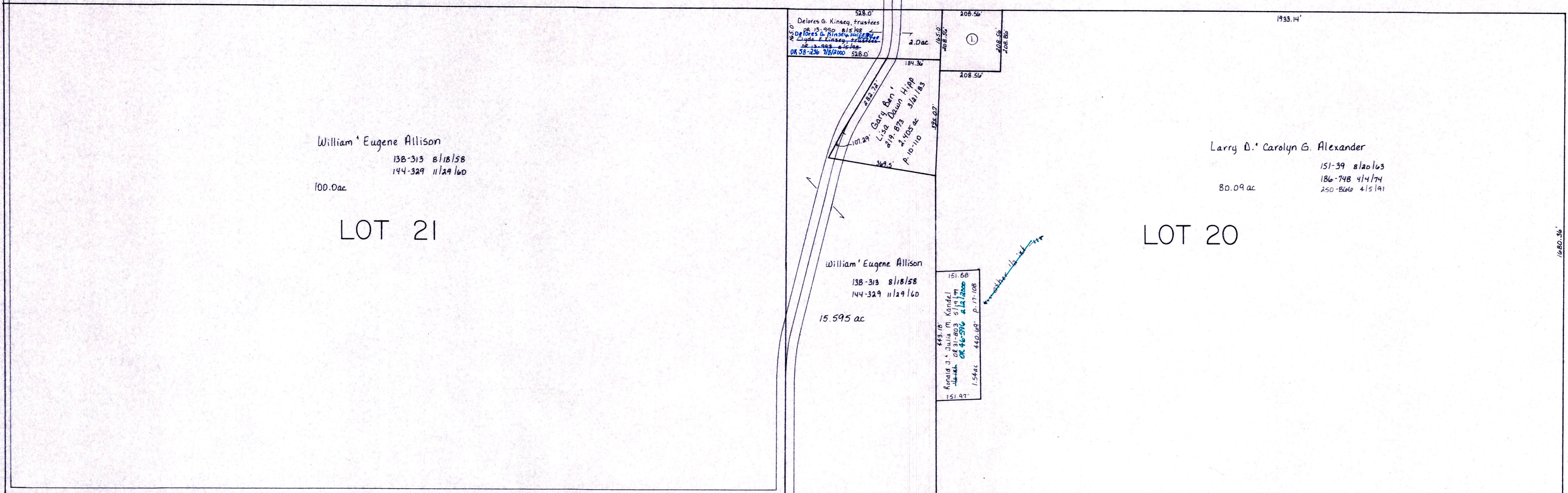


T.H. 218
Old T.H. 125
40' R/W

Lot 22

Lot 19



2nd Qtr. 3rd Str. C.H. 280 60' R/W

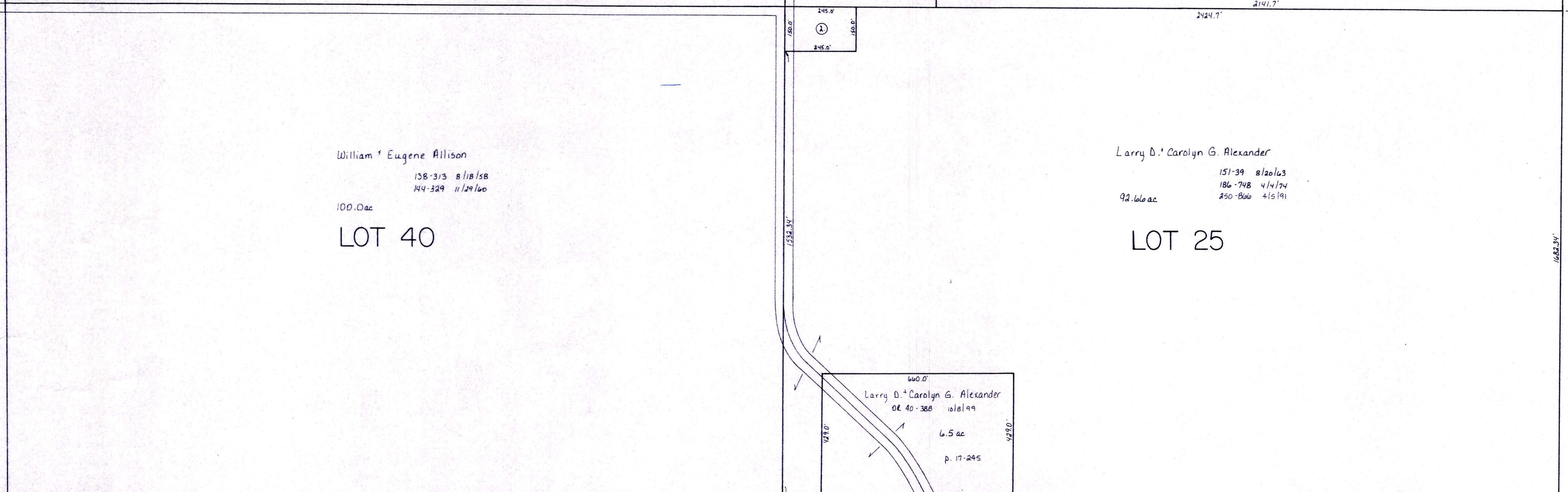
William Eugene Allison
138-313 8/18/58
144-329 11/24/60
100.0 ac
LOT 21

Larry D. Carolyn G. Alexander
151-39 8/20/63
186-748 4/17/74
250-806 4/15/81
80.09 ac
LOT 20

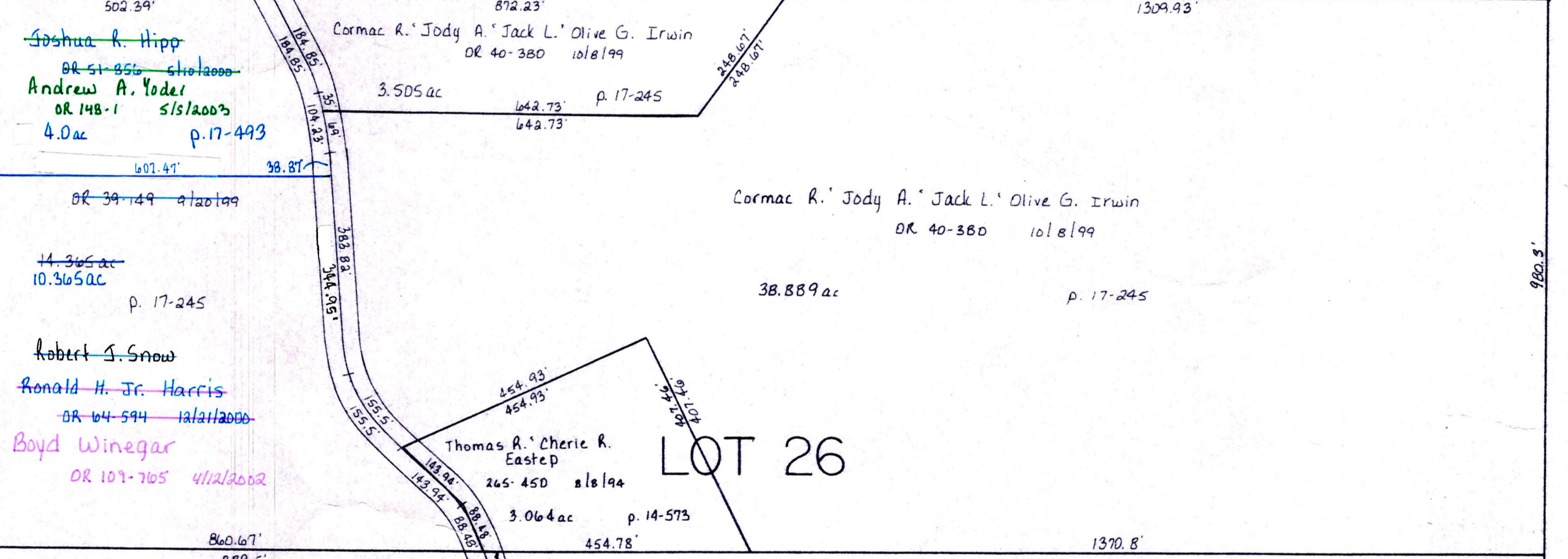
William Eugene Allison
138-313 8/18/58
144-329 11/24/60
100.0 ac
LOT 40

Larry D. Carolyn G. Alexander
151-39 8/20/63
186-748 4/17/74
250-806 4/15/81
93.66 ac
LOT 25

Knox Twp.

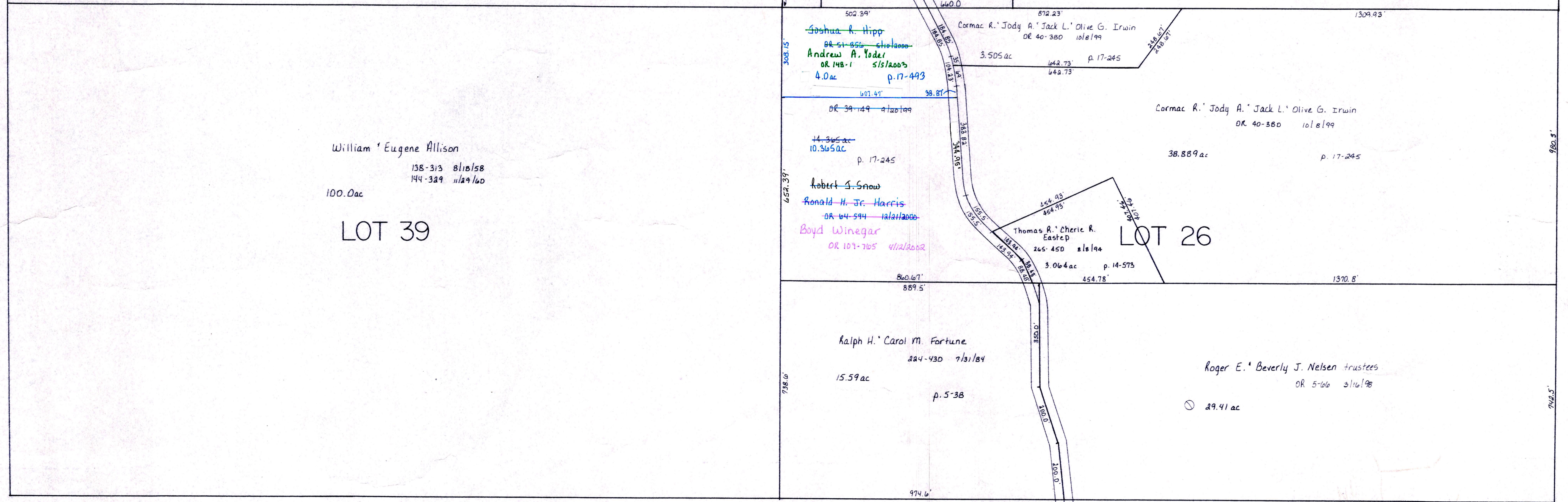


William Eugene Allison
138-313 8/18/58
144-329 11/24/60
100.0 ac
LOT 39



William Eugene Allison
138-313 8/18/58
144-329 11/24/60
100.0 ac
LOT 39

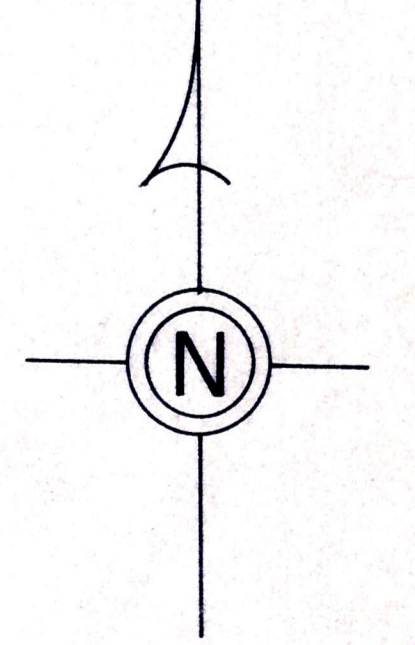
Cormac R. Jody A. Jack L. Olive G. Irwin
OR 40-380 10/1/99
38.859 ac
p. 17-245
LOT 26



Ralph H. Carol M. Fortune
244-930 7/31/84
15.59 ac
p. 5-36

Roger E. Beverly J. Nelson trustees
OR 5-26 8/16/98
29.41 ac

Delores G. Kinsey trustee - 25-70-813 ac
Delores G. Kinsey trustee - 25-70-813 ac
Delores G. Kinsey trustee - 25-70-813 ac
Larry D. Carolyn G. Alexander - 25-387-813/84 ac
250-806 4/15/81



T-9, R-8
2nd. Qtr. lots 20, 21
3rd. Qtr. lots 25, 26, 39, 40
MONROE TWP.
SCALE: 1" = 200'

LET IT BE KNOWN, THIS MAP HAS BEEN PREPARED AS A REFERENCE GUIDE TO PROPERTY OWNERSHIP WE BELIEVE THIS INFORMATION TO BE CORRECT AND CURRENT, HOWEVER, IT IS NOT INTENDED FOR ANY LEGAL USE, WHETHER IT BE IN SALES, TRANSFERS, TRADES, LEASES OF ANY TYPE, ETC. AND DO NOT ACCEPT RESPONSIBILITY FOR ERRORS OF ANY NATURE OR OMISSIONS CONTAINED HEREIN.

M-3