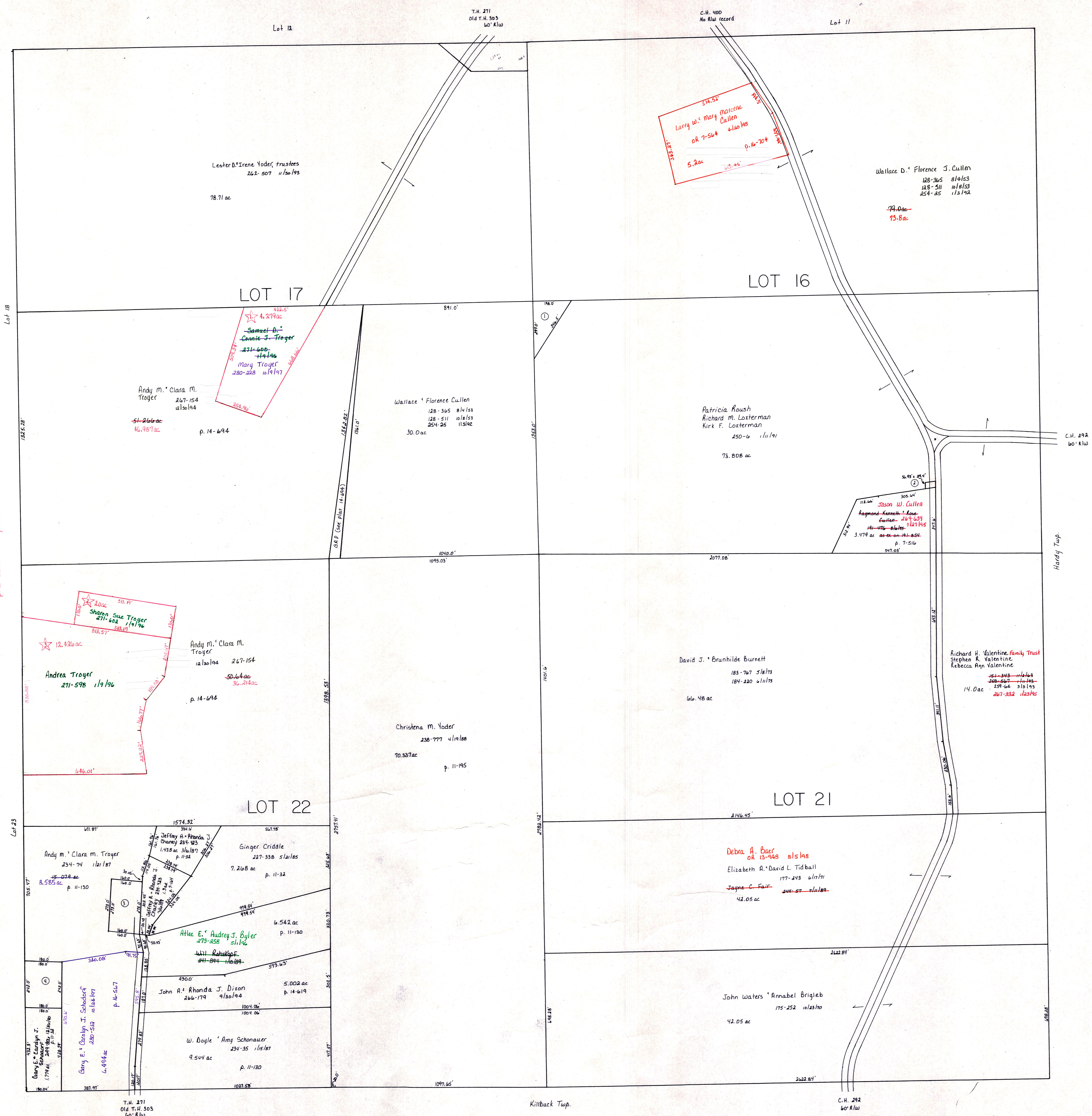


☆ Andy M. Clara M. Troyer Allotment No. 1
p. 2-254
platted 11/19/95



- ① Jason W. Cullen 224-639 7/12/95 25925-12192
- ② Wallace D. Florence J. Cullen 128-365 8/16/53, 128-511 10/6/53, 254-25 1/3/92
- ③ Raymond K. Rose M. Cullen 222-652 1/15/54, 222-654 12/16/54 .038 ac p. 10-226
- ④ Dorothy J. Drake 201-883 3/16/72 1.0 ac p. 7-165
- ⑤ Andy M. Clara M. Troyer 267-154 11/30/94 46.98 ac
- ⑥ Gary E. Cardyne J. Schoedorf 244-806 12/20/90 1.0 ac p. 6-74

T-9, R-8, 4th. Qtr.
lots 16, 17, 21, 22
MONROE TWP.
SCALE: 1" = 200'

LET IT BE KNOWN, THIS MAP HAS BEEN PREPARED AS A REFERENCE GUIDE TO PROPERTY OWNERSHIP. WE BELIEVE THIS INFORMATION TO BE CORRECT AND CURRENT, HOWEVER, IT IS NOT INTENDED FOR ANY LEGAL USE, WHETHER IT BE IN SALES, TRANSFERS, TRADES, LEASES OF ANY TYPE, ETC., AND DO NOT ACCEPT RESPONSIBILITY FOR ERRORS OF ANY NATURE OR OMISSIONS CONTAINED HEREIN.

M-19