

H-23

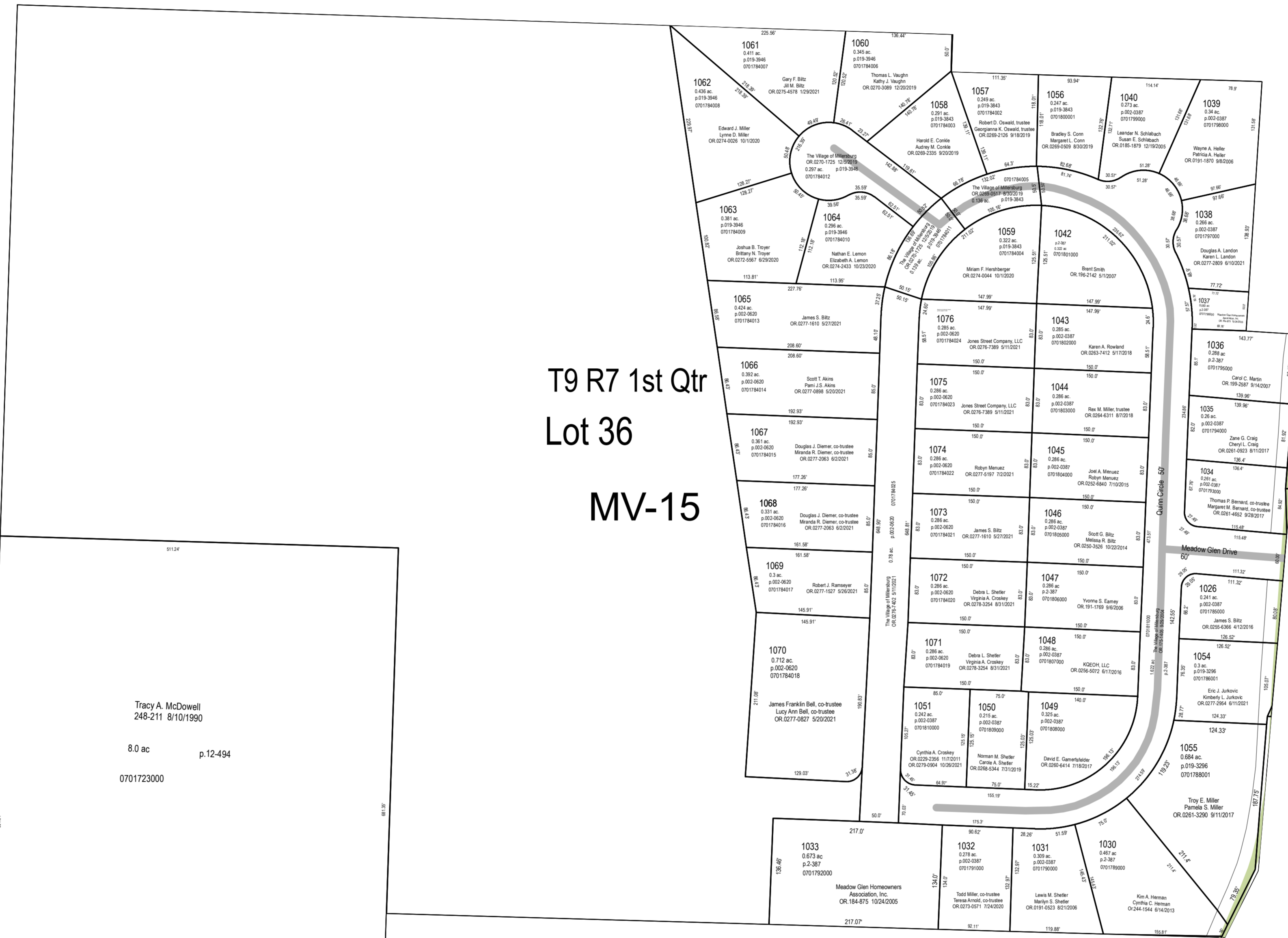
T9 R7 1st Qtr
Lot 36
MV-15

MV-12

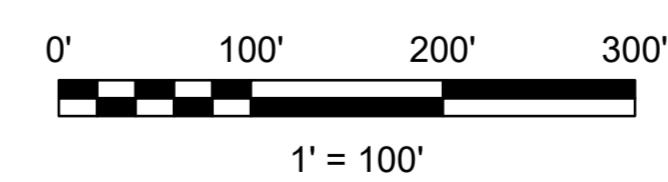
MV-01

H-22

MV-02



Tracy A. McDowell
246-211 8/10/1990
8.0 ac p.12-494
0701723000



LET IT BE KNOWN, THIS MAP HAS BEEN PREPARED AS A REFERENCE GUIDE TO PROPERTY OWNERSHIP. WE BELIEVE THIS INFORMATION TO BE CORRECT AND CURRENT, HOWEVER IT IS NOT INTENDED FOR ANY LEGAL USE, WHETHER IT BE SALES, TRANSFERS, TRADIES, LEASES OF ANY TYPE, ETC. AND DO NOT ACCEPT RESPONSIBILITY FOR ERRORS OF ANY NATURE OR OMISSIONS CONTAINED HEREIN.

S.F.T.
new survey required
for next transfer

Last Revision: 1/5/2022

Village of Millersburg
Lot 36
1st Qtr., T-9, R-7
Hardy Twp.
Holmes County, Ohio

MV-15