

K-27

MC-02

LB-H

LB-G

K-26

T8 R7  
Sec 22

MC-06

TR 80 (40' RW)

2800.63'

1308.28'

Raye A. Pringle, trustee  
OR.218-660 5/6/2010  
60.0 ac p.19-1695  
1300046000

1326.14'

RAM USA, Inc.  
OR.0251-1734 1/8/2015  
160.0 ac.  
1300590000

2675.22'

1337.76'

RAM USA, Inc.  
OR.0251-1734 1/8/2015  
40.0 ac.  
1300592000

Ben A. and Sarie B. Raber  
OR.206-987 8/20/2008  
40.799 ac p.19-1359  
1300419000

1326.14'

1334.64'

Raymond R. Miller  
Verna Miller  
OR.231-3401 2/21/2012  
40.0 ac  
1300501000

RAM USA, Inc.  
OR.0251-1734 1/8/2015  
40.0 ac.  
1300591000

1346.13'

Mark D. Durbin  
Eva M. Ryckman  
OR.0260-0747 5/4/2017  
42.226 ac. p.019-2573  
1300589000

529.94'

412.5'

1341.49'

1325.58'

1334.43'

1334.64'

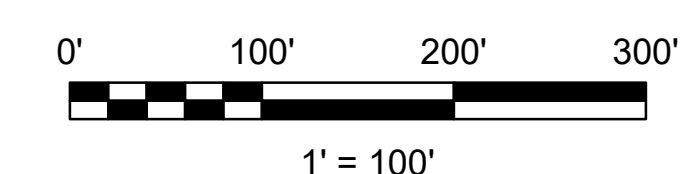
1549.15'

1672.91'

1286.87'

1346.13'

1334.43'



LET IT BE KNOWN, THIS MAP HAS BEEN PREPARED AS A REFERENCE GUIDE TO PROPERTY OWNERSHIP. WE BELIEVE THIS INFORMATION TO BE CORRECT AND CURRENT. HOWEVER, IT IS NOT INTENDED FOR ANY LEGAL USE, WHETHER IT BE SALES, TRANSFERS, TRADES, LEASES OF ANY TYPE, ETC. AND DO NOT ACCEPT RESPONSIBILITY FOR ERRORS OF ANY NATURE OR OMISSIONS CONTAINED HEREIN.

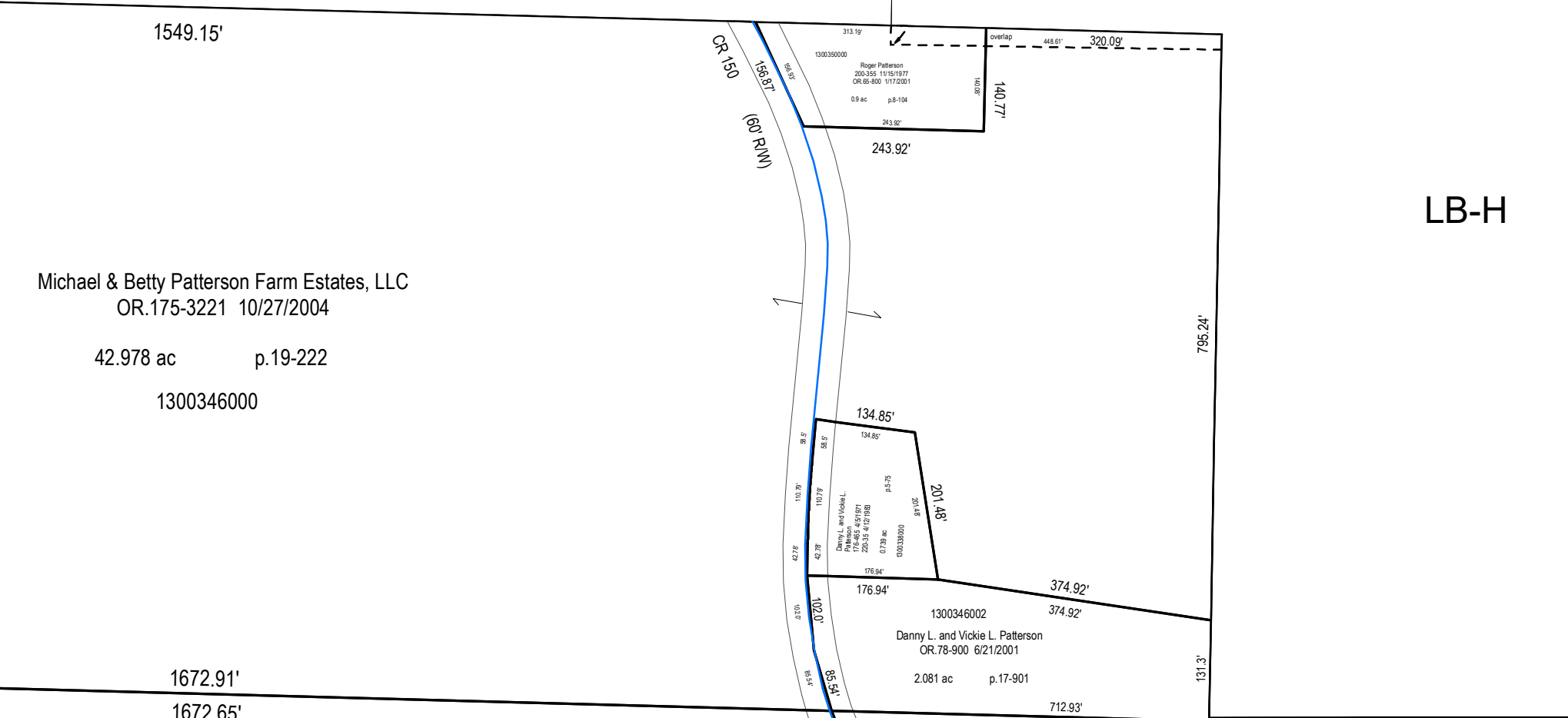
S.F.T.  
new survey required  
for next transfer

Last Revision: 1/5/2022



Part Sec. 22, T-8, R-7  
Mechanic Twp.  
Holmes County, Ohio

**MC-01**



Ervin M. Yoder  
Marie R. Yoder  
OR.0259-3534 3/3/2017  
3.914 ac. p.016-0977  
130039001

George R. Shemit  
OR.85-450 8/17/2001  
38.59 ac  
1300426000

George R. Shemit  
OR.85-450 8/17/2001  
15.0 ac  
1300427000

Steven E. Gray  
255-1071 6/29/1992  
264-414 5/11/1994  
65.0 ac  
1300121000

1320.0'

307.48'

267.2'

267.2'

3119 ac

130039001

130039001

130039001

130039001

130039001

130039001

130039001

130039001

130039001

130039001

130039001

130039001

130039001

130039001

130039001

130039001

130039001

130039001

130039001

130039001

130039001

130039001

130039001

130039001

130039001

130039001

130039001

130039001

130039001

130039001

130039001

130039001

130039001

130039001

130039001

130039001

130039001

130039001

130039001

130039001

130039001

130039001

130039001

130039001

130039001

130039001

130039001

130039001