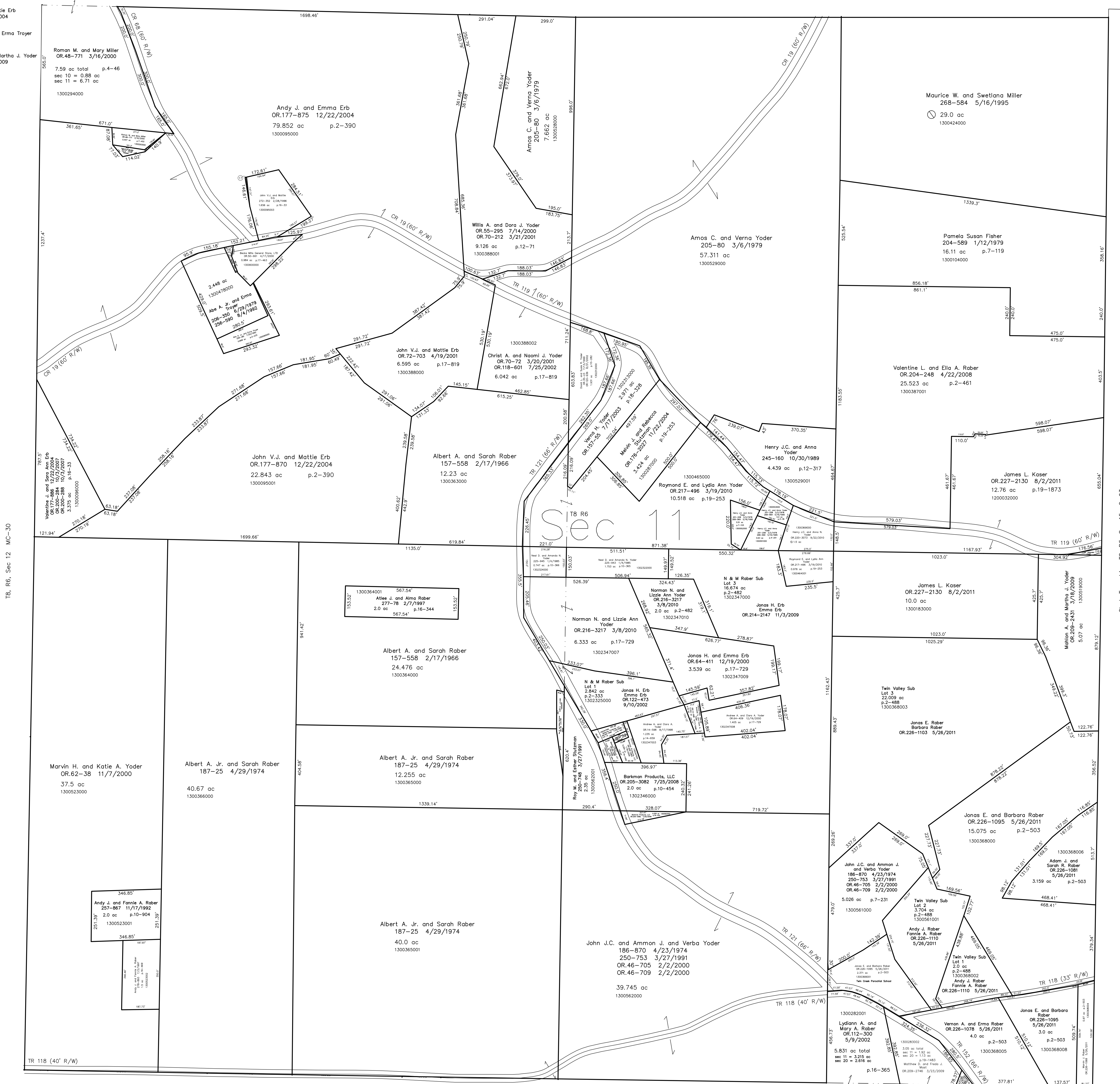


- 1300095004 (17) John V.J. Erb and Mattie Erb  
OR.177-870 12/22/2004  
0.013 ac p.2-390
- 1300601002 (18) Abe A. Troyer, Jr. and Erma Troyer  
256-275 7/20/1992  
0.062 ac p.2-233
- 130019001 (19) Mahlon A. Yoder and Martha J. Yoder  
OR.209-2431 3/18/2009  
0.06 ac



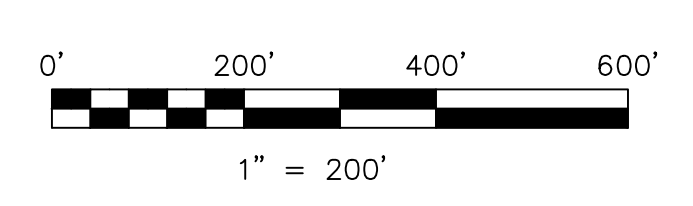
T8, R6, Sec 12 MC-30

Clark Township, T8, R6, Sec 15 C-03

**N. & M. Rober Subdivision**  
Plat 2-333 Platted 6/19/2001

**Twin Valley Subdivision**  
Plat 2-488 Platted 6/23/2010

Last Revision: 8/2/2011



LET IT BE KNOWN, THIS MAP HAS BEEN PREPARED AS A REFERENCE GUIDE TO PROPERTY OWNERSHIP. WE BELIEVE THIS INFORMATION TO BE CORRECT AND CURRENT, HOWEVER IT IS NOT INTENDED FOR ANY LEGAL USE, WHETHER IT BE IN SALES, TRANSFERS, TRAILS, LEASES OF ANY TYPE, ETC. AND DO NOT ACCEPT RESPONSIBILITY FOR ERRORS OF ANY NATURE OR OMISSIONS CONTAINED HEREIN.

⊙ new survey required for next transfer

**T-8, R-6, Sec.11**  
**Mechanic Twp.**  
**Holmes County, Ohio**

# MC-35