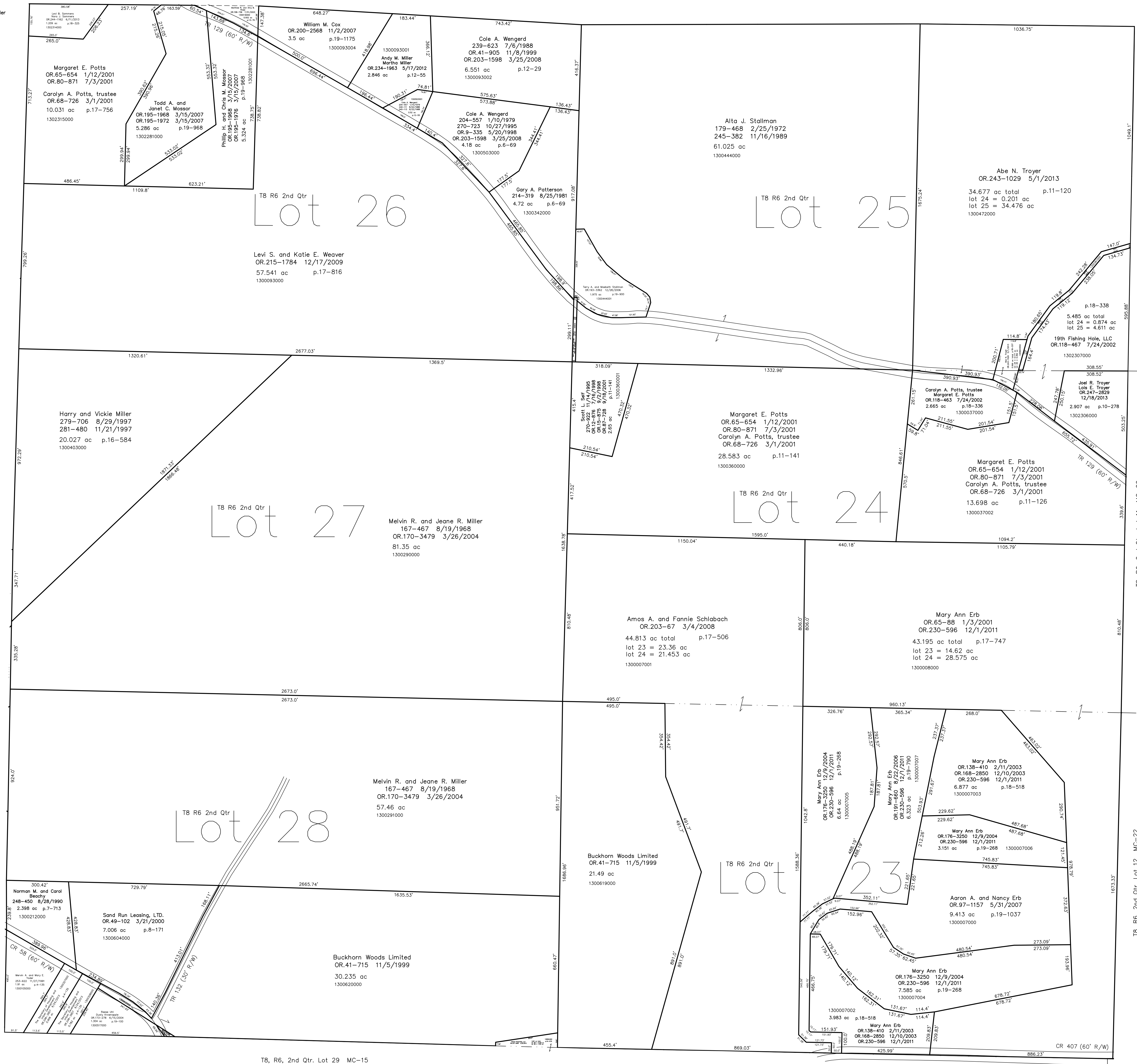


1300361000 Aaron M. Yoder and Susan D. Yoder
OR.233-2393 4/23/2012
Margaret E. Potts
OR.65-654 1/12/2001
OR.80-871 7/3/2001
Carolyn A. Potts, trustee
OR.68-726 3/1/2001
0.389 ac p.13-13



T8, R7, Sec. 1 MC-10

T8, R6, 2nd Qtr. Lot 10 MC-22

T8, R6, 2nd Qtr. Lot 11 MC-22

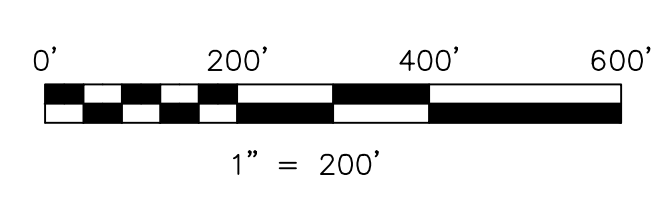
T8, R6, 2nd Qtr. Lot 12 MC-22

T8, R6, 2nd Qtr. Lot 29 MC-15

T8, R6, 2nd Qtr. Lot 22 MC-15

Last Revision: 12/18/2013

**T-8, R-6, 2nd.Qtr.
Lots 23,24,25,26,27,28
Mechanic Twp.
Holmes County, Ohio**



LET IT BE KNOWN, THIS MAP HAS BEEN PREPARED AS A REFERENCE GUIDE TO PROPERTY OWNERSHIP. WE BELIEVE THIS INFORMATION TO BE CORRECT AND CURRENT, HOWEVER IT IS NOT INTENDED FOR ANY LEGAL USE, WHETHER IT BE IN SALES, TRANSFERS, TRADES, LEASES OF ANY TYPE, ETC., AND DO NOT ACCEPT RESPONSIBILITY FOR ERRORS OF ANY NATURE OR OMISSIONS CONTAINED HEREIN.

new survey required for next tier

MC-16