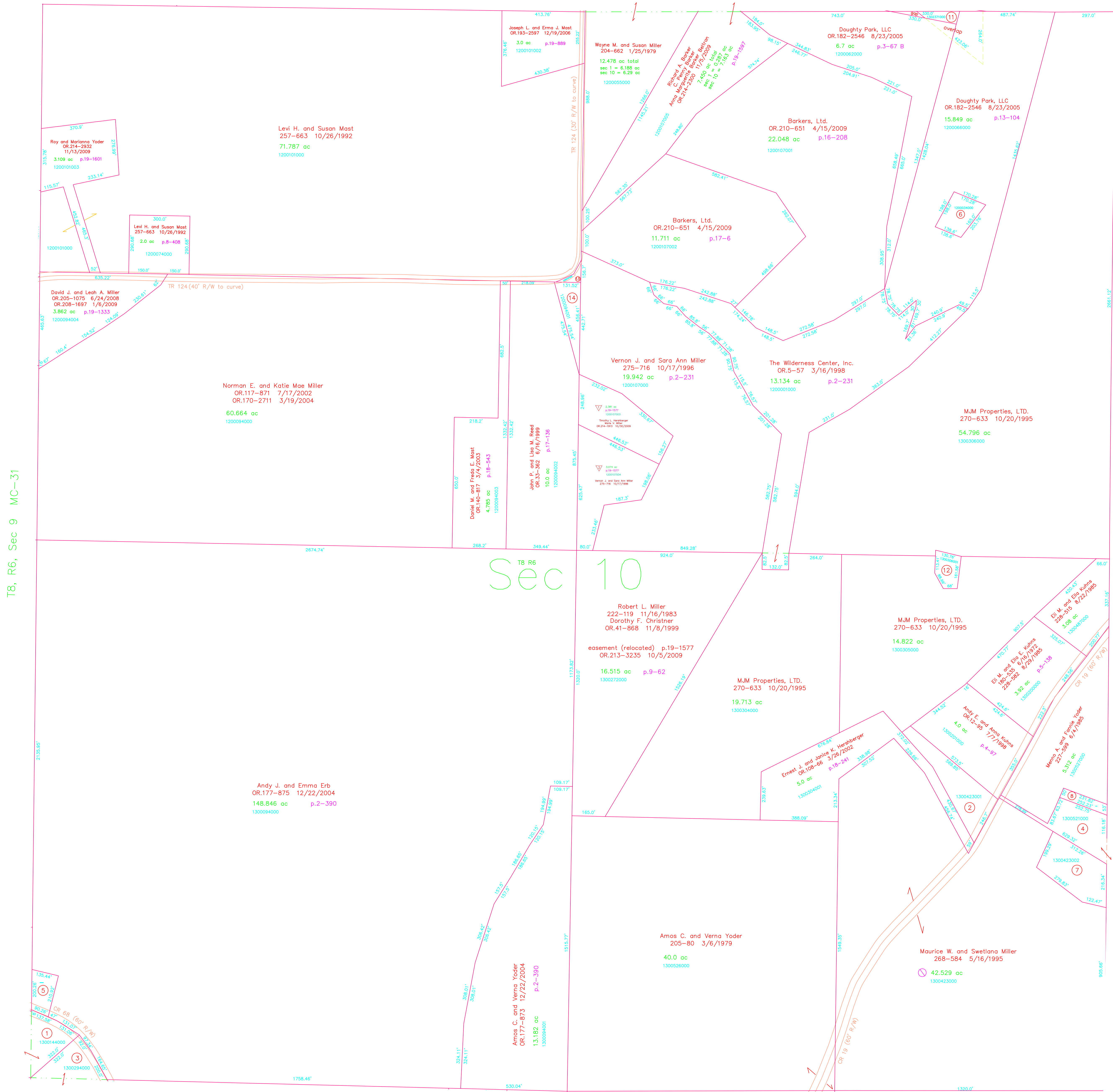


T8, R6, Sec 1 MC-37

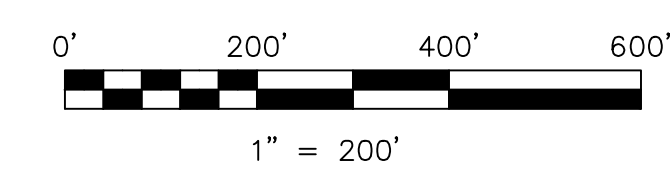


T8, R6, Sec 11 MC-35

- 1300144000 ① Vernon N. and Effie N. Hershberger
OR.109-62 4/9/2002
0.956 ac p.16-412
- 1300423001 ② M.J.M. Properties, Ltd.
270-633 10/20/1995
1.724 ac p.12-230
- 1300294000 ③ Roman M. and Mary Miller
OR.48-771 3/16/2000
0.88 ac p.4-46
- 1300521000 ④ Leon A. and Carol B. Rober
OR.200-1740 10/24/2007
1.41 ac p.9-4
- 1300094002 ⑤ Henry V. Hershberger
OR.205-168 6/15/2008
0.919 ac p.19-1323
- 1200034000 ⑥ Dale Kaser, Richard Kaser, Lol Kaser,
Alice J. Miller, Brenda Kaser Geltz
188-514 9/6/1974
0.6 ac
- 1300423002 ⑦ Leon A. and Carol B. Rober
OR.205-351 6/17/2008
1.723 ac p.19-1326
- 1300527001 ⑧ Leon A. and Carol B. Rober
OR.206-1346 8/28/2008
0.278 ac p.19-1370

- ⑨ Not used
- ⑩ Not used
- 1302371000 ⑪ Bryan K. and Paulette R. Swiger
OR.206-2206 9/9/2008
0.10 ac SR-56
- 1300306001 ⑫ Tina's House, Inc.
243-661 6/9/1989
0.453 ac p.12-230
- 1200101001 ⑬ Vernon J. and Sara Ann Miller
275-716 10/17/1996
0.104 ac p.15-252
- 1200094001 ⑭ Vernon J. and Sara Ann Miller
279-527 8/15/1997
0.689 ac p.16-511

▽ Doughty Rim Subdivision
Plat 19-1577 Platted 10/2/2009



LET IT BE KNOWN, THIS MAP HAS BEEN PREPARED AS A REFERENCE GUIDE TO PROPERTY OWNERSHIP. WE BELIEVE THIS INFORMATION TO BE CORRECT AND CURRENT, HOWEVER IT IS NOT INTENDED FOR ANY LEGAL USE, WHETHER IT BE IN SALES, TRANSFERS, TRAILS, LEASES OF ANY TYPE, ETC. AND DO NOT ACCEPT RESPONSIBILITY FOR ERRORS OF ANY NATURE OR OMISSIONS CONTAINED HEREIN.

⊙ new survey required for next transfer

Last Revision: 11/13/2009

**T-8, R-6, Sec.10
Mechanic Twp.
Holmes County, Ohio**

MC-36