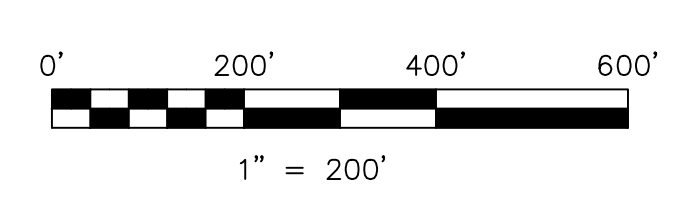


T8, R6, Sec 12 MC-30

Clark Township T8, R5, Sec 15 C-03

- 1300519001 Mahlon A. and Martha J. Yoder  
OR.209-2431 3/18/2009  
0.06 ac
- 1300464001 Melvin Jr. and Ruth S. Stutzman  
OR.176-2023 11/21/2004  
0.976 ac p.19-253
- 1300369000 Elmer H. and Dorothy A. Yoder  
221-733 10/3/1983  
229-808 12/26/1985  
1.5 ac
- 1300553000 Henry J.C. and Anna Yoder  
201-208 3/2/1978  
268-569 5/16/1995  
0.4 ac
- 1300551000 Henry J.C. and Anna Yoder  
201-208 3/2/1978  
268-569 5/16/1995  
0.63 ac p.4-201
- 1300552000 Henry J.C. and Anna Yoder  
201-208 3/2/1978  
268-569 5/16/1995  
0.51 ac p.3-103
- 1300095004 John V.J. and Mattie Erb  
OR.177-870 12/22/2004  
0.013 ac p.2-390
- 1200029000 Carl Nelson and Elsie Kaser  
230-406 2/26/1986  
230-532 3/12/1986  
0.48 ac
- 1302324000 Neal D. and Amanda N. Yoder  
225-945 1/4/1985  
0.747 ac p.10-366
- 1300293000 Roman M. and Mary Miller  
OR.48-771 3/16/2000  
0.447 ac p.7-402
- 1300600000 Beck's Mills General Store, LTD  
OR.50-661 4/17/2000  
0.884 ac p.17-463
- 1300095005 Roman M. and Mary Miller  
OR.72-431 4/16/2001  
0.127 ac p.17-847
- 1300523002 Andy J. and Fannie A. Raber  
257-867 11/17/1992  
0.06 ac
- 1300363001 Roy M. and Esther Stutzman  
250-750 3/27/1991  
0.259 ac p.12-629
- 1302347001 Barkman Products, LLC  
OR.205-3082 7/25/2008  
0.222 ac p.12-944
- 1300095003 John V.J. and Mattie Erb  
OR.205-3082 7/25/2008  
0.222 ac p.12-944
- 1300095004 John V.J. and Mattie Erb  
OR.177-870 12/22/2004  
0.013 ac p.2-390
- 1300282000 John S. and Betty Miller  
204-667 1/26/1979  
1.535 ac
- 1300601002 Abe A. Jr. and Erma Troyer  
256-275 7/20/1992  
0.062 ac p.2-233
- 1302347008 Andrew A. and Clara A. Yoder  
OR.64-409 12/19/2000  
1.405 ac p.17-729
- 1302322000 Neal D. and Amanda N. Yoder  
225-943 1/4/1985  
1.753 ac p.10-365
- 1300095002 Abe A. Jr. and Erma Troyer  
256-281 7/20/1992  
0.668 ac p.2-233
- 1302347002 Barkman Products, LLC  
OR.205-3082 7/25/2008  
0.059 ac p.14-659
- 1302347003 Andrew A. and Clara A. Yoder  
OR.14-598 8/17/1998  
1.323 ac p.14-659
- 1302347004 Andrew A. and Clara A. Yoder  
OR.14-598 8/17/1998  
0.224 ac p.16-91
- 1300562002 Barkman Products, LLC  
OR.205-3082 7/25/2008  
0.255 ac p.16-324
- 1200031000 Carl Nelson and Elsie Kaser  
230-406 2/26/1986  
230-532 3/12/1986  
1.8 ac
- 1302347006 Barkman Products, LLC  
OR.205-3082 7/25/2008  
0.21 ac p.16-782
- 1302347005 Barkman Products, LLC  
OR.208-2965 1/30/2009  
0.294 ac p.19-1456

N. & M. Raber Subdivision  
Plat 2-333 Platted 6/19/2001



LET IT BE KNOWN, THIS MAP HAS BEEN PREPARED AS A REFERENCE GUIDE TO PROPERTY OWNERSHIP. WE BELIEVE THIS INFORMATION TO BE CORRECT AND CURRENT. HOWEVER, IT IS NOT INTENDED FOR ANY LEGAL USE, WHETHER IT BE IN SALES, TRANSFERS, TRUSTS, LEASES OF ANY TYPE, ETC. AND DO NOT ACCEPT RESPONSIBILITY FOR ERRORS OF ANY NATURE OR OMISSIONS CONTAINED HEREIN.

new survey required for next transfer

Last Revision: 11/3/2009

T-8, R-6, Sec.11  
Mechanic Twp.  
Holmes County, Ohio

MC-35