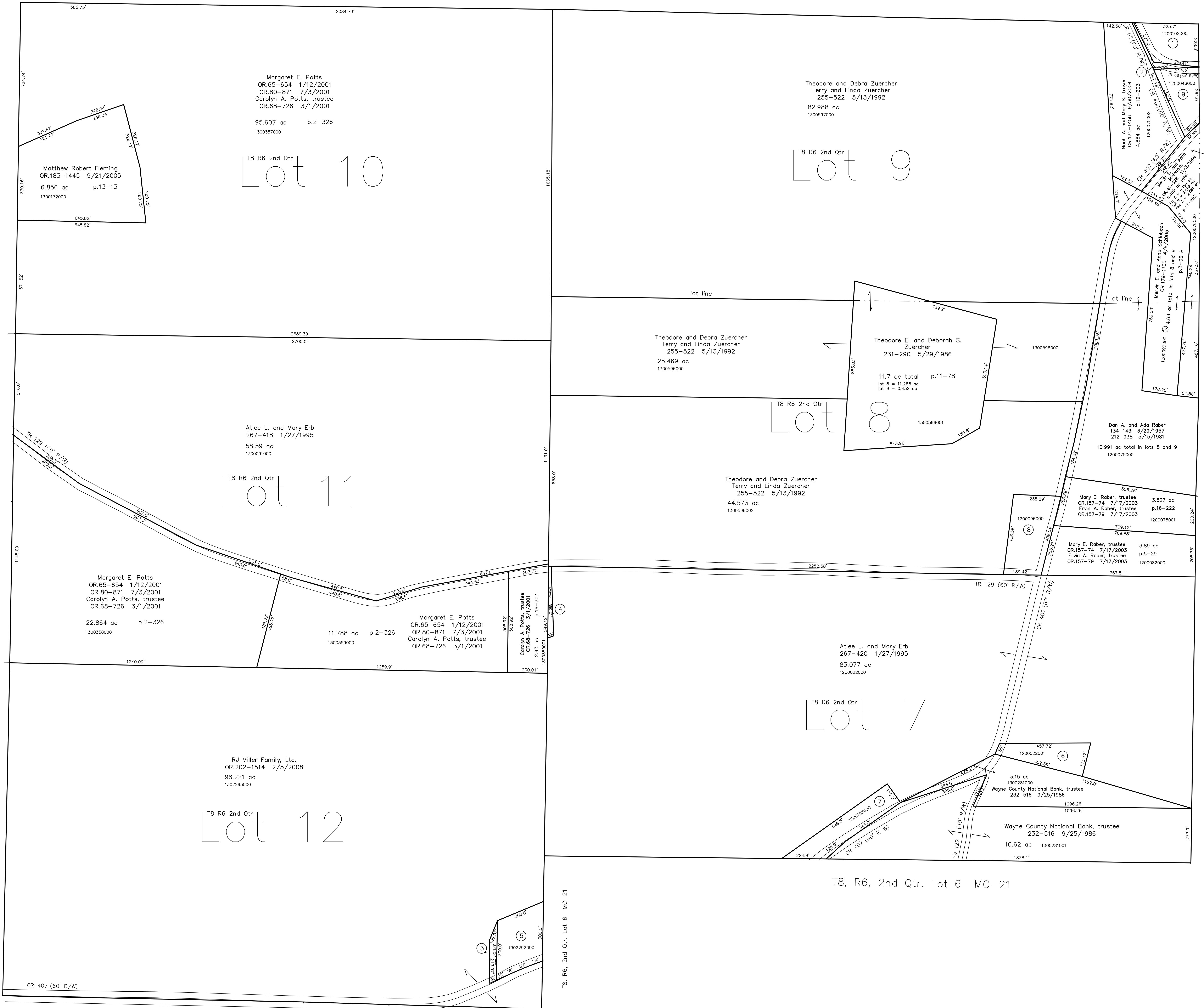


T8, R6, 2nd Qtr. Lot 25 MC-16

T8, R6, 2nd Qtr. Lot 24 MC-16

T8, R6, 2nd Qtr. Lot 23 MC-16

T8, R6, Sec. 3 MC-27



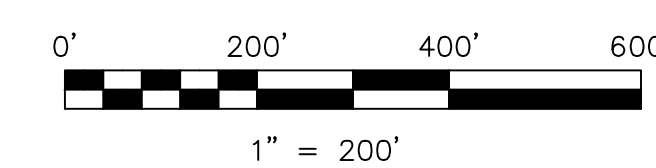
T8, R6, 2nd Qtr. Lot 13 MC-21

T8, R6, 2nd Qtr. Lot 6 MC-21

- 120002000 ① Noah A. and Mary S. Troyer
209-291 5/5/1980
282-471 11/24/1993
1.33 ac p.4-184
- 1200010000 ② Noah S. and Mary E. Miller
235-608 6/16/1987
0.05 ac
- 1302293001 ③ Mark L. and Elizabeth E. Miller
263-189 1/21/1994
OR.135-101 1/13/2003
0.217 ac p.14-419
- 1200022002 ④ Carolyn A. Potts, trustee
OR.68-726 3/1/2001
0.169 ac p.17-449
- 1302292000 ⑤ Mark L. and Elizabeth E. Miller
231-565 9/15/1983
OR.135-101 1/13/2003
1.562 ac p.10-187
- 1200022001 ⑥ Eli E. and Fannie Kempf
232-285 9/5/1986
1.84 ac p.10-604
- 1200108000 ⑦ Henry M.C. and Katie M. Yoder
176-450 4/3/1971
278-510 8/14/1997
1.57 ac p.3-43 B
- 1200096000 ⑧ Paul W. and Kimberly M. Miller
OR.76-515 5/31/2001
1.94 ac
- 1200046000 ⑨ Ivan R. and Esther H. Mast
252-866 9/17/1991
259-641 4/23/1993
1.03 ac

Last Revision: 2/5/2008

**T-8, R-6, 2nd.Qtr.
Lots 7,8,9,10,11,12
Mechanic Twp.
Holmes County, Ohio**



LET IT BE KNOWN, THIS MAP HAS BEEN PREPARED AS A REFERENCE GUIDE TO PROPERTY OWNERSHIP. WE BELIEVE THIS INFORMATION TO BE CORRECT AND CURRENT, HOWEVER IT IS NOT INTENDED FOR ANY LEGAL USE, WHETHER IT BE IN SALES, TRANSFERS, TRAILS, LEASES OF ANY TYPE, ETC. AND DO NOT ACCEPT RESPONSIBILITY FOR ERRORS OF ANY NATURE OR OMISSIONS CONTAINED HEREIN.

⊙ new survey required for next transfer

MC-22