

T8, R6, 3rd Qtr. Lot 12 MC-19

T8, R6, 3rd Qtr. Lot 12 MC-19

T8, R6, Sec 13 MC-25

T8, R6, Sec 18 MC-24

T8, R6, 3rd Qtr. Lot 9 MC-19

T8, R6, 3rd Qtr. Lot 9 MC-19

T8, R6, 3rd Qtr. Lot 9 MC-19

T8, R6, 3rd Qtr. Lot 9 MC-19

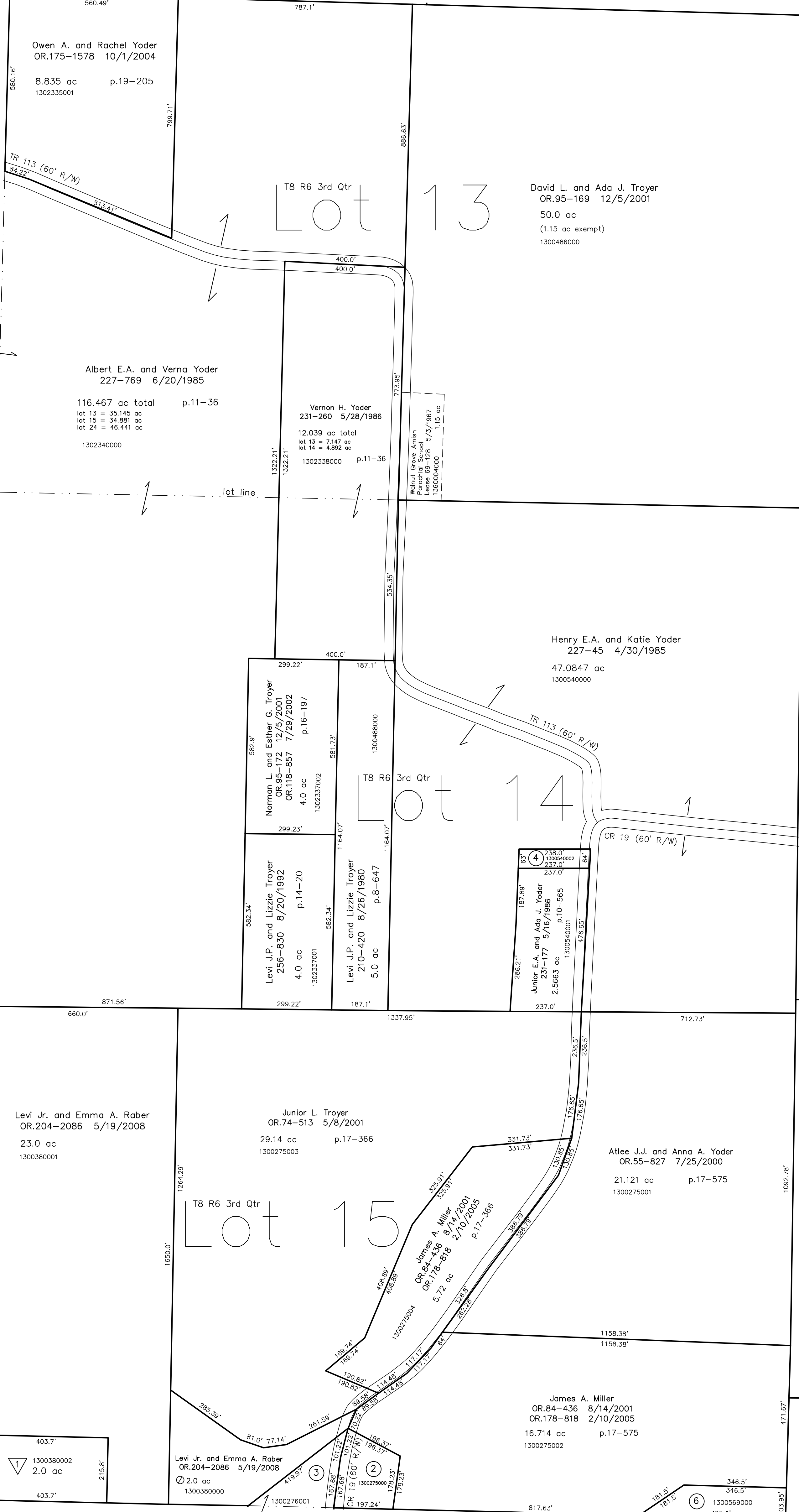
T8, R6, 3rd Qtr. Lot 9 MC-19

T8, R6, 3rd Qtr. Lot 9 MC-19

T8, R6, 3rd Qtr. Lot 24 MC-13

T8, R6, 3rd Qtr. Lot 23 MC-13

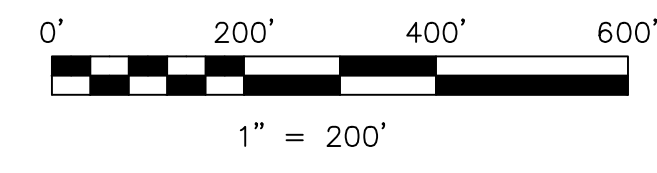
T8, R6, 3rd Qtr. Lot 22 MC-12



T8, R6, 3rd Qtr. Lot 16 MC-17

- 1300275000 ② James A. Miller
OR.84-436 8/14/2001
OR.178-818 2/10/2005
1.0 ac p.17-366
- 1300276001 ③ Aden L. Rober
OR.75-847 5/25/2001
0.842 ac p.17-575
- 1300540002 ④ Junior E.A. and Ada J. Yoder
OR.50-18 4/6/2000
0.349 ac p.17-453
- 1300542002 ① Wayne J. and Ada Mae Schlabach
OR.63-660 12/7/2000
0.114 ac p.17-716
- 1300569000 ⑥ Jacob J. and Dara Yoder
255-742 6/2/1992
1.0 ac
- 1300541005 ⑦ Ivan E. and Katie Mast
OR.194-1085 1/17/2007
0.358 ac p.19-916
- 1300541004 ⑧ Ivan E. and Katie Mast
OR.194-1085 1/17/2007
1.861 ac p.19-916

⊖ L. & E. Subdivision
Plot 19-1295 Platted 4/24/2008
1300380002 ⊖ Levi E. and Emma Rober
OR.204-2098 5/19/2008
2.0 ac p.19-1295



LET IT BE KNOWN, THIS MAP HAS BEEN PREPARED AS A REFERENCE GUIDE TO PROPERTY OWNERSHIP. WE BELIEVE THIS INFORMATION TO BE CORRECT AND CURRENT, HOWEVER IT IS NOT INTENDED FOR ANY LEGAL USE, WHETHER IT BE IN SALES, TRANSFERS, TRAILS, LEASES OF ANY TYPE, ETC. AND DO NOT ACCEPT RESPONSIBILITY FOR ERRORS OF ANY NATURE OR OMISSIONS CONTAINED HEREIN.

⊖ new survey required for next transfer

Last Revision: 5/19/2008
T-8, R-6, 3rd.Qtr.
Lots 5,6,7,8,13,14,15
Mechanic Twp.
Holmes County, Ohio

MC-18