

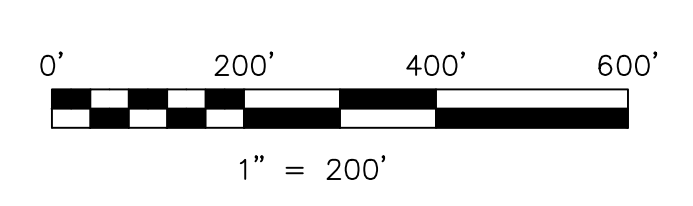
T8, R6, 2nd Qtr. Lot 13 MC-21
 T8, R6, 2nd Qtr. Lot 14 MC-21
 T8, R6, 2nd Qtr. Lot 15 MC-20

- 1300236000 ① Martin A. and Leona D. Erb
 OR.33-923 6/23/1999
 0.75 ac p.4-165
- 1300322000 ② R.J. Miller Family, Ltd.
 OR.202-1514 2/5/2008
 0.413 ac p.3-72
- 1300088002 ③ R.J. Miller Family, Ltd.
 OR.202-1514 2/5/2008
 0.052 ac p.16-510
- 1300612001 ④ Adam T. Weisgarber, trustee
 Leoni A. Weisgarber, trustee
 OR.203-2576 4/4/2008
 1.316 ac p.19-1279
- 0000000000 ⑤ not used
- 1300622001 ⑥ Buckhorn Woods Limited
 OR.41-715 11/5/1999
 0.918 ac p.11-69
- 1300090002 ⑦ Lester A. and Mattie Erb
 OR.77-865 6/12/2001
 1.0 ac p.17-893
- 1300090001 ⑧ Lester A. and Mattie Erb
 OR.77-865 6/12/2001
 1.5 ac p.14-156
- 1300060000 ⑨ Lucile D. Angle
 193-246 2/26/1976
 201-577 4/21/1978
 1.128 ac p.5-172

- 1300438000 ⑩ Steven J. and Terrie Glausque
 230-570 2/24/1986
 1.018 ac p.4-192
- 1300349000 ⑪ Carol M. Patterson
 150-311 6/3/1993
 281-679 6/24/1993
 1.5 ac
- 1300354000 ⑫ Evelyn Elaine Plant
 126-490 3/14/1952
 1.0 ac
- 0000000000 ⑬ not used
- 1300475000 ⑭ Melissa M. and Matthew A. Shaner
 OR.158-882 7/31/2003
 1.82 ac p.3-11 B
- 1300019000 ⑮ Jimmie E. Stewart, Jr.
 242-378 2/28/1989
 1.039 ac
- 1300476000 ⑯ Beverly Tish
 185-16 9/5/1973
 278-509 6/5/1997
 OR.201-59 11/15/2007
 1.66 ac p.7-120
- 1300623001 ⑰ Steven J. and Terrie Glausque
 OR.192-2962 11/6/2006
 0.218 ac p.19-858

Truit Acres Subdivision
 Plat 19-1300 Platted 5/1/2008
 1300269002 ⑱ Joshua P. Truit
 OR.204-1459 5/12/2008
 3.276 ac p.19-1300

T8, R6, 2nd Qtr. Lot 19 MC-14



LET IT BE KNOWN, THIS MAP HAS BEEN PREPARED AS A REFERENCE GUIDE TO PROPERTY OWNERSHIP. WE BELIEVE THIS INFORMATION TO BE CORRECT AND CURRENT. HOWEVER IT IS NOT INTENDED FOR ANY LEGAL USE, WHETHER IT BE IN SALES, TRANSFERS, TRAILS, LEASES OF ANY TYPE, ETC. AND DO NOT ACCEPT RESPONSIBILITY FOR ERRORS OF ANY NATURE OR OMISSIONS CONTAINED HEREIN.

⊙ new survey required for next transfer

Last Revision: 4/30/2009
T-8, R-6, 2nd.Qtr.
Lots 20,21,22,29,30,31
Mechanic Twp.
Holmes County, Ohio

MC-15