

T8, R6, 2nd Qtr. Lot 7 MC-22

T8, R6, 2nd Qtr. Lot 12 MC-22

T8, R6, 2nd Qtr. Lot 22 MC-15

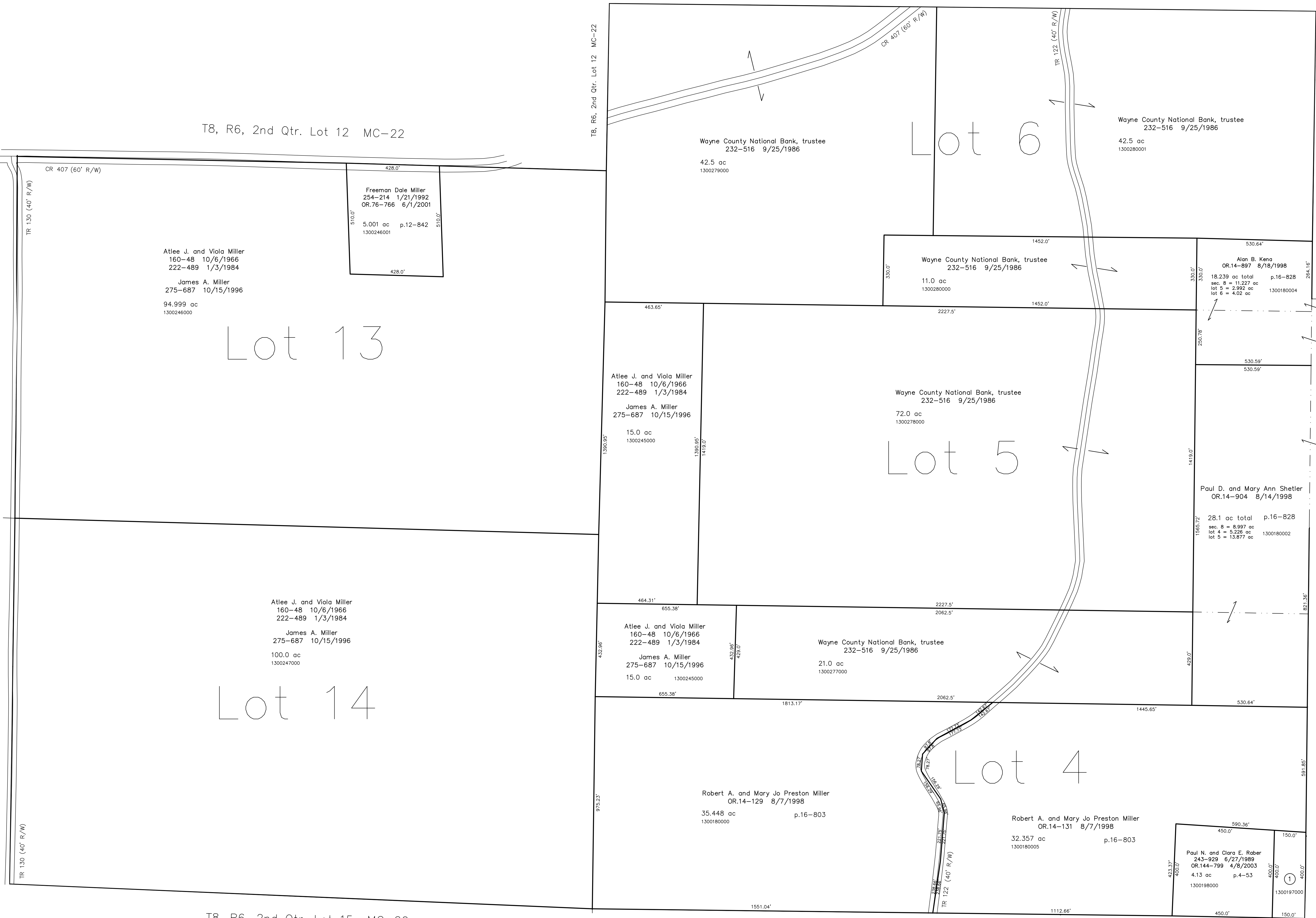
T8, R6, 2nd Qtr. Lot 21 MC-15

T8, R6, Sec. 3 MC-27

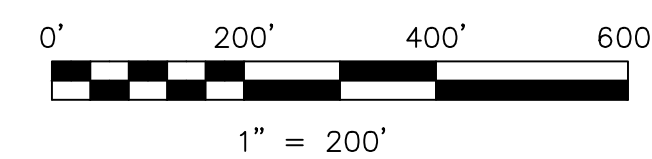
T8, R6, Sec. 8 MC-26

T8, R6, 2nd Qtr. Lot 15 MC-20

T8, R6, 2nd Qtr. Lot 3 MC-20



1300197000 (1) Paul N. and Clara E. Rober
 243-929 6/27/1989
 OR.144-799 4/8/2003
 1.37 ac p.3-56



LET IT BE KNOWN, THIS MAP HAS BEEN PREPARED AS A REFERENCE GUIDE TO PROPERTY OWNERSHIP. WE BELIEVE THIS INFORMATION TO BE CORRECT AND CURRENT, HOWEVER IT IS NOT INTENDED FOR ANY LEGAL USE, WHETHER IT BE IN SALES, TRANSFERS, TRUSTS, LEASES OF ANY TYPE, ETC. AND DO NOT ACCEPT RESPONSIBILITY FOR ERRORS OF ANY NATURE OR OMISSIONS CONTAINED HEREIN.

(1) new survey required for next transfer

Last Revision: 1/1/2004

**T-8, R-6, 2nd.Qtr.
 Lots 4,5,6,13,14
 Mechanic Twp.
 Holmes County, Ohio**

MC-21