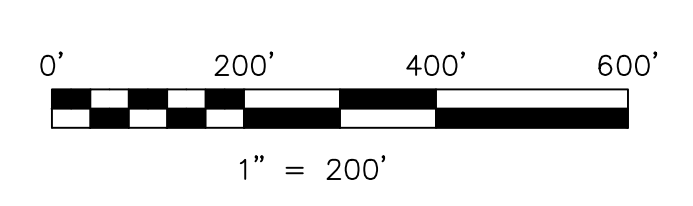


1300222000 ① James J. and Betty J. Hinkle
 242-345 2/28/1989
 OR.59-229 9/25/2000
 0.5 ac p.18-424



LET IT BE KNOWN, THIS MAP HAS BEEN PREPARED AS A REFERENCE GUIDE TO PROPERTY OWNERSHIP. WE BELIEVE THIS INFORMATION TO BE CORRECT AND CURRENT, HOWEVER IT IS NOT INTENDED FOR ANY LEGAL USE, WHETHER IT BE IN SALES, TRANSFERS, TRUSTS, LEASES OF ANY TYPE, ETC. AND DO NOT ACCEPT RESPONSIBILITY FOR ERRORS OF ANY NATURE OR OMISSIONS CONTAINED HEREIN.

⊙ new survey required for next transfer

Last Revision: 11/4/2005

**T-8, R-6,
 2nd.Qtr. Lots 18,19,32,33
 3rd.Qtr. Lots 26,27
 Mechanic Twp.
 Holmes County, Ohio**

MC-14