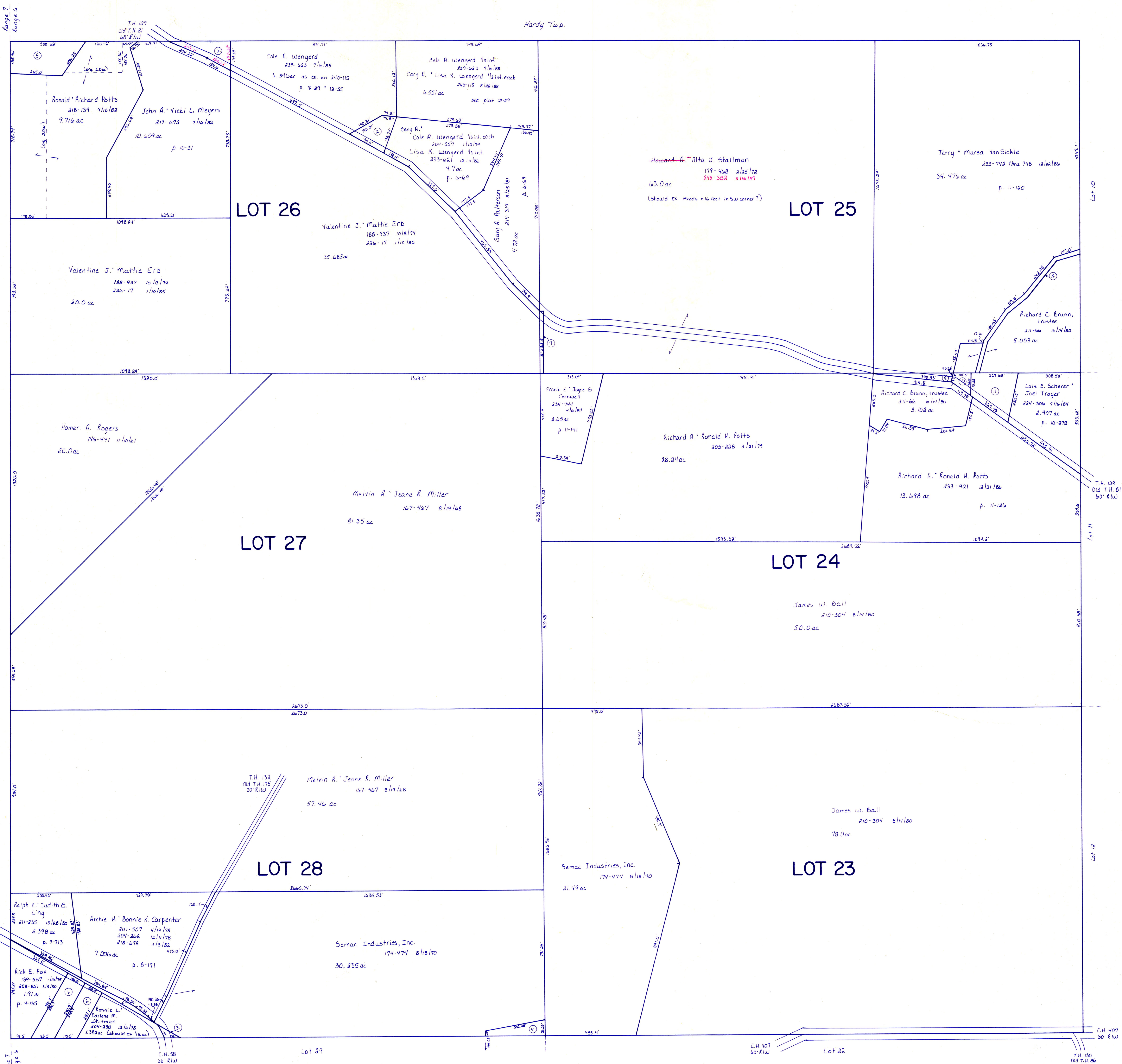


Hardy Twp.



- ① Frank Jr. Kris Arnold 222-580 1/2/184 .206ac p.4-135
- ② Frank Jr. Kris Ann Arnold 232-43 8/18/86 .782ac p.4-135
- ③ Semac Industries, Inc. 174-474 8/18/70 .0625ac
- ④ Adam T. Leilani A. Weisgarber 234-425 3/5/87 .361ac p.8-173
- ⑤ David J. Tr. Tommy L. Williams 243-292 2/1/89
- ⑥ Richard A. Carolyn N. Ronald H. Margaret E. Potts 224-543 8/18/80 1.209ac p.10-290
- ⑦ Joseph C. Machter 225-720-2130/185 -none
- ⑧ Terry Edna Stoddard 249-225 7/16/85 .302ac p.13-76
- ⑨ Frank E. Joyce G. Cornwall 234-744 4/1/87 .115ac p.11-141
- ⑩ 1/2 int. Ronald H. Richard A. Potts 133-545 2/13/87 } .39 ac
- 1/2 int. Hope Hummel 240-504 8/18/80 } .414 ac
- ⑪ Terry Marsa VanSickle 233-742 thru 748 12/22/86 .201ac p.11-120
- ⑫ Richard C. Brunn, trustee 211-66 10/14/80 .13ac
- ⑬ Eileen B. De Hass 220-766 6/26/83 .8811ac p.8-761
- ⑭ Cole A. Wengert 204-537 1/16/79, 240-111 8/18/86 .52ac p.12-55

T-8, R-6, 2nd. Qtr.
 Lots 23, 24, 25, 26, 27, 28
MECHANIC TWP.
 SCALE: 1" = 200'

LET IT BE KNOWN, THIS MAP HAS BEEN PREPARED AS A REFERENCE GUIDE TO PROPERTY OWNERSHIP. WE BELIEVE THIS INFORMATION TO BE CORRECT AND CURRENT, HOWEVER, IT IS NOT INTENDED FOR ANY LEGAL USE, WHETHER IT BE IN SALES, TRANSFERS, TRADES, LEASES OF ANY TYPE, ETC., AND DO NOT ACCEPT RESPONSIBILITY FOR ERRORS OF ANY NATURE OR OMISSIONS CONTAINED HEREIN.

MIC-16