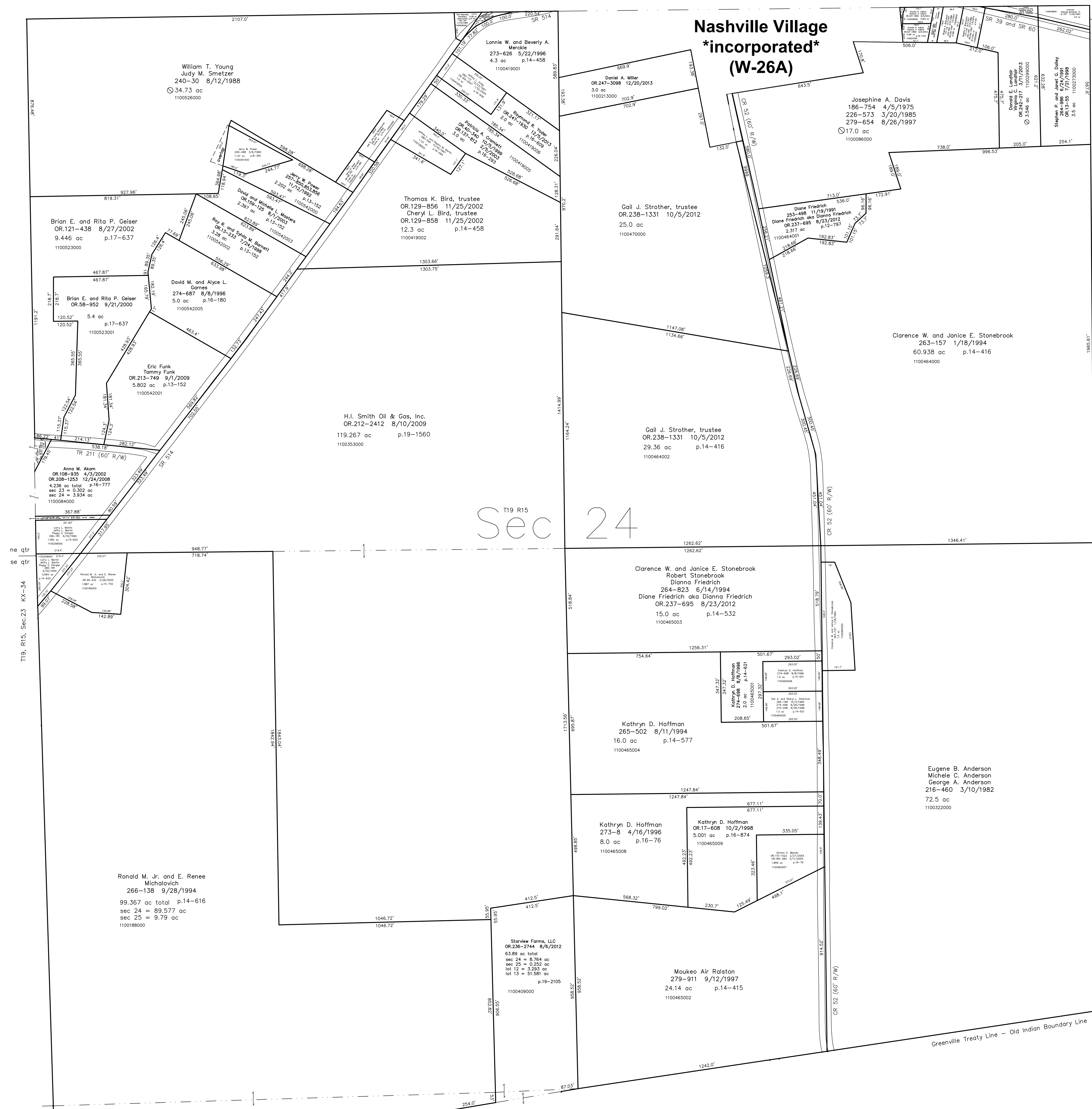


1100207000 © Nicholas L. and Amanda Hiller
OR 218-3040 6/16/2010
0.028 ac p.2-344

Ripley Township
T17, R14, Sec.18 RP-01
Knox Township
T17, R14, Sec.19 KX-36



Nashville Village *incorporated* (W-26A)

William T. Young
Judy M. Smetzer
240-30 8/12/1988
34.73 ac
1100226000

Lonnie W. and Beverly A. Merckle
273-626 5/22/1986
4.3 ac p.14-458
1100419001

Daniel A. Miller
OR.247-3098 12/20/2013
3.0 ac
1100213000

Josephine A. Davis
186-754 4/5/1975
226-573 3/20/1985
279-654 8/26/1997
17.0 ac
1100086000

Thomas K. Bird, trustee
OR.129-856 11/25/2002
Cheryl L. Bird, trustee
OR.129-858 11/25/2002
12.3 ac p.14-458
1100419002

Gail J. Strother, trustee
OR.238-1331 10/5/2012
25.0 ac
1100470000

Clarence W. and Janice E. Stonebrook
263-157 1/18/1994
60.938 ac p.14-416
1100464000

Gail J. Strother, trustee
OR.238-1331 10/5/2012
29.36 ac p.14-416
1100464002

H.I. Smith Oil & Gas, Inc.
OR.212-2412 8/10/2009
119.267 ac p.19-1560
1100353000

Brian E. and Rita P. Geiser
OR.121-438 8/27/2002
9.446 ac p.17-637
1100523000

Brian E. and Rita P. Geiser
OR.58-952 9/21/2000
5.4 ac p.17-637
1100523001

Eric Funk
Tommy Funk
OR.213-749 9/17/2009
5.802 ac p.13-152
1100542001

Anna M. Akorn
OR.108-135 4/3/2002
OR.208-1253 12/24/2008
4.236 ac total p.16-777
sec 23 = 0.302 ac
sec 24 = 3.934 ac
1100084000

Ronald M. Jr. and E. Renee Michalovich
266-138 9/28/1994
99.367 ac total p.14-616
sec 24 = 89.577 ac
sec 25 = 9.79 ac
1100188000

StarView Farms, LLC
OR.236-2744 8/6/2012
63.88 ac total
sec 24 = 8.764 ac
sec 25 = 0.252 ac
lot 12 = 3.293 ac
lot 13 = 51.581 ac
p.19-2105
1100409000

Moukeo Air Ralston
279-911 9/12/1997
24.14 ac p.14-415
1100465002

Clarence W. and Janice E. Stonebrook
Robert Stonebrook
Dianna Friedrich
264-823 6/14/1994
Diane Friedrich aka Dianna Friedrich
OR.237-895 8/23/2012
15.0 ac p.14-532
1100465003

Kathryn D. Hoffman
274-668 8/7/1996
2.0 ac p.14-621
1100465004

Kathryn D. Hoffman
265-502 8/11/1994
16.0 ac p.14-577
1100465004

Kathryn D. Hoffman
273-8 4/16/1996
8.0 ac p.16-76
1100465008

Kathryn D. Hoffman
OR.17-608 10/2/1998
5.001 ac p.16-874
1100465009

Eugene B. Anderson
Michele C. Anderson
George A. Anderson
216-460 3/10/1982
72.5 ac
1100322000

David M. and Alyce L. Ganes
274-887 8/9/1996
5.0 ac p.16-180
1100542005

David and Michelle L. Masters
OR.13-233 8/1/2003
p.13-152
553.89
1100542003

Roy R. and Sybil W. Bennett
OR.59-25 7/24/1988
p.13-152
2.391 ac
1100523002

StarView Farms, LLC
OR.236-2744 8/6/2012
63.88 ac total
sec 24 = 8.764 ac
sec 25 = 0.252 ac
lot 12 = 3.293 ac
lot 13 = 51.581 ac
p.19-2105
1100409000

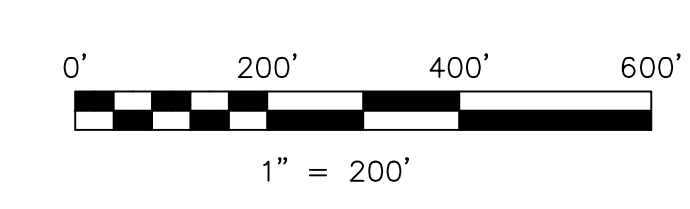
StarView Farms, LLC
OR.236-2744 8/6/2012
63.88 ac total
sec 24 = 8.764 ac
sec 25 = 0.252 ac
lot 12 = 3.293 ac
lot 13 = 51.581 ac
p.19-2105
1100409000

ne qtr
se qtr
T19, R15, Sec.23 KX-34

nw qtr
sw qtr
T17, R14, Sec.19 KX-36

T19, R15
Sec.26 KX-12
T9, R9, 1st Qtr. Lot 18 KX-13

T9, R9, 1st Qtr. Lot 12 KX-18
T9, R9, 1st Qtr. Lot 13 KX-18



LET IT BE KNOWN, THIS MAP HAS BEEN PREPARED AS A REFERENCE GUIDE TO PROPERTY OWNERSHIP. WE BELIEVE THIS INFORMATION TO BE CORRECT AND CURRENT, HOWEVER IT IS NOT INTENDED FOR ANY LEGAL USE, WHETHER IT BE IN SALES, TRANSFERS, TRADES, LEASES OF ANY TYPE, ETC., AND DO NOT ACCEPT RESPONSIBILITY FOR ERRORS OF ANY NATURE OR OMISSIONS CONTAINED HEREIN.

new survey required for next transfer

Last Revision: 12/20/2013
T-19, R-15, Sec. 24,25
Knox Twp.
Holmes County, Ohio

KX-35