

Erik E. Abrahamsen
Laura K. Abrahamsen,
trustees
OR.244-1051 6/6/2013
60.0 ac
1100001000

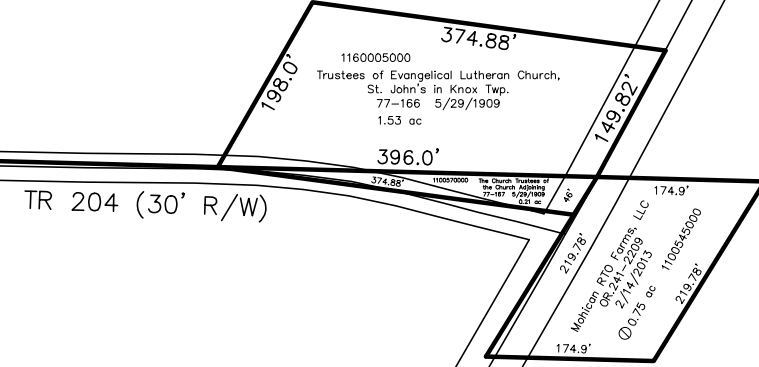
Mohican RTO Farms, LLC
OR.241-2209 2/14/2013
113.75 ac
1100436000

Mohican RTO Farms, LLC
OR.241-2209 2/14/2013
80.0 ac
1100437000

Mohican RTO Farms, LLC
OR.241-2209 2/14/2013
80.0 ac
1100440000

Ben E. Strobel, as trustee
OR.206-472 7/23/2008
Erik E. Abrahamsen
Laura K. Abrahamsen, trustees
OR.244-1051 6/6/2013
60.0 ac
1100469000

T9 R9 Sec 16



Conard F. Stitzlein, trustee
Nancy A. Stitzlein, trustee
OR.241-2217 2/14/2013
200.687 ac
1100435000

Shawn A. Young
193-296 3/2/1976
262-513 12/1/1993
40.0 ac
1100527000

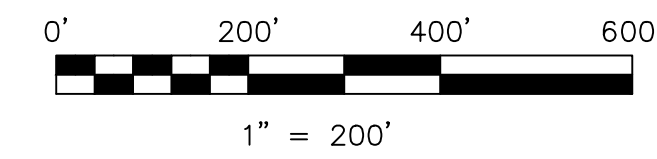
Gary and Carolyn McKelvey
266-369 10/19/1994
OR.167-1282 10/15/2003
Virginia G. Cary, trustee
OR.156-596 7/15/2003
40.0 ac
1100073000

John M. Young
176-715 5/10/1971
42.277 ac p.5-81
1100533000

J. Donald and Patricia A. Stitzlein,
co-trustees
OR.195-1351 3/7/2007
62.75 ac
1100459000

J. Donald and Patricia A. Stitzlein,
co-trustees
OR.195-1351 3/7/2007
10.0 ac
1100461000

Last Revision: 6/6/2013
T-9, R-9, Sec. 16
Knox Twp.
Holmes County, Ohio



LET IT BE KNOWN, THIS MAP HAS BEEN PREPARED AS A REFERENCE
GUIDE TO PROPERTY OWNERSHIP. WE BELIEVE THIS INFORMATION TO
BE CORRECT AND CURRENT. HOWEVER IT IS NOT INTENDED FOR ANY
LEGAL USE, WHETHER IT BE IN SALES, TRANSFERS, TRADES, LEASES
OF ANY TYPE, ETC., AND DO NOT ACCEPT RESPONSIBILITY FOR
ERRORS OF ANY NATURE OR OMISSIONS CONTAINED HEREIN.

new survey required
for next transfer

KX-02