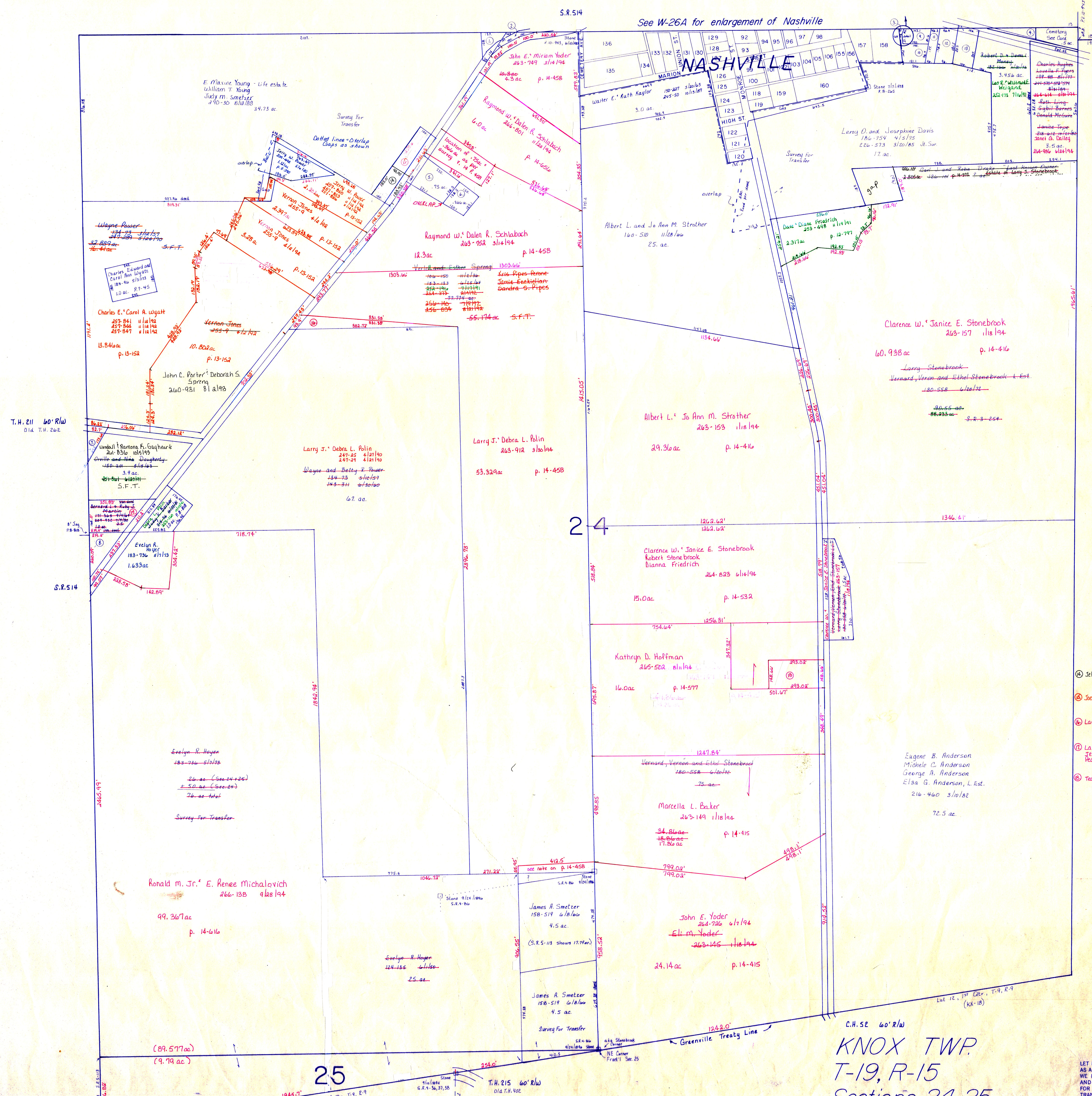


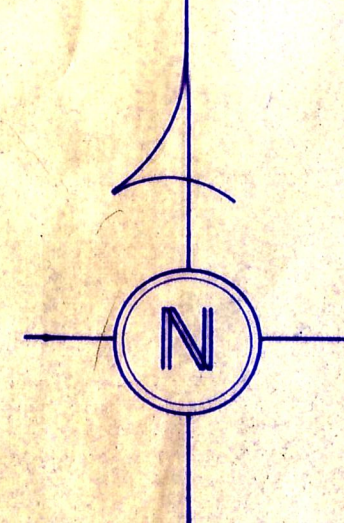
SCALE: 1" = 100'

See W-26A for enlargement of Nashville



S.R. 39
S.R. 60

- 1. 28 ac. The Nashville Cemetery Association 154-331 1/18/84
- 2. 18 ac. The Nashville Cemetery Association 155-109 3/16/85
- 3. 0.6 ac. Jack M. Carpenter S.F.T. 218-177 9/18/82
- 4. 25 ac. Trustees of the First Presbyterian Church 44-25 8/12/79
- 5. 75 ac. Betty A. Calbraith 157-219 8/24/67
- 6. 36 ac. Betty A. Calbraith 178-621 2/19/71
- 7. 10 ac. Thomas J. and Leonard E. Stone 180-558 6/26/72
- 8. 50 ac. Bernard L. and Ruby J. Lafferty 177-116 6/15/71
- 9. 263 ac. Jerry L. and A. Kaye Parsons 191-438 8/25/77
- 10. 25 ac. Jack M. Carpenter S.F.T. 218-177 9/18/82
- 11. 174 ac. Jerry L. and A. Kaye Parsons 191-438 8/25/77
- 12. 39 ac. Carl D. and Brigitte E. Brennstuhl 177-116 6/15/71
- 13. 504 ac. Carl D. and Brigitte E. Brennstuhl 177-116 6/15/71
- 14. Jeffrey A. Lori A. Sively 261-238 3/26/93
- 15. 261 ac. Kathy Brittenbuecher 256-637 8/17/92
- 16. Larry J. & Debra L. Polin 263-912 3/30/94
- 17. Larry L. Martin, Jeffrey L. Martin, Peggy S. Klingler 264-181 1/28/94
- 18. Ted A. Steinman 266-199 1/18/94



KNOX TWP.
T-19, R-15
Sections 24, 25
SCALE 1" = 200'

LET IT BE KNOWN, THIS MAP HAS BEEN PREPARED AS A REFERENCE GUIDE TO PROPERTY OWNERSHIP. WE BELIEVE THIS INFORMATION TO BE CORRECT AND CURRENT. HOWEVER, IT IS NOT INTENDED FOR ANY LEGAL USE, WHETHER IT BE IN SALES, TRANSFERS, TRADES, LEASES OF ANY TYPE, ETC., AND DO NOT ACCEPT RESPONSIBILITY FOR ERRORS OF ANY NATURE OR OMISSIONS CONTAINED HEREIN.