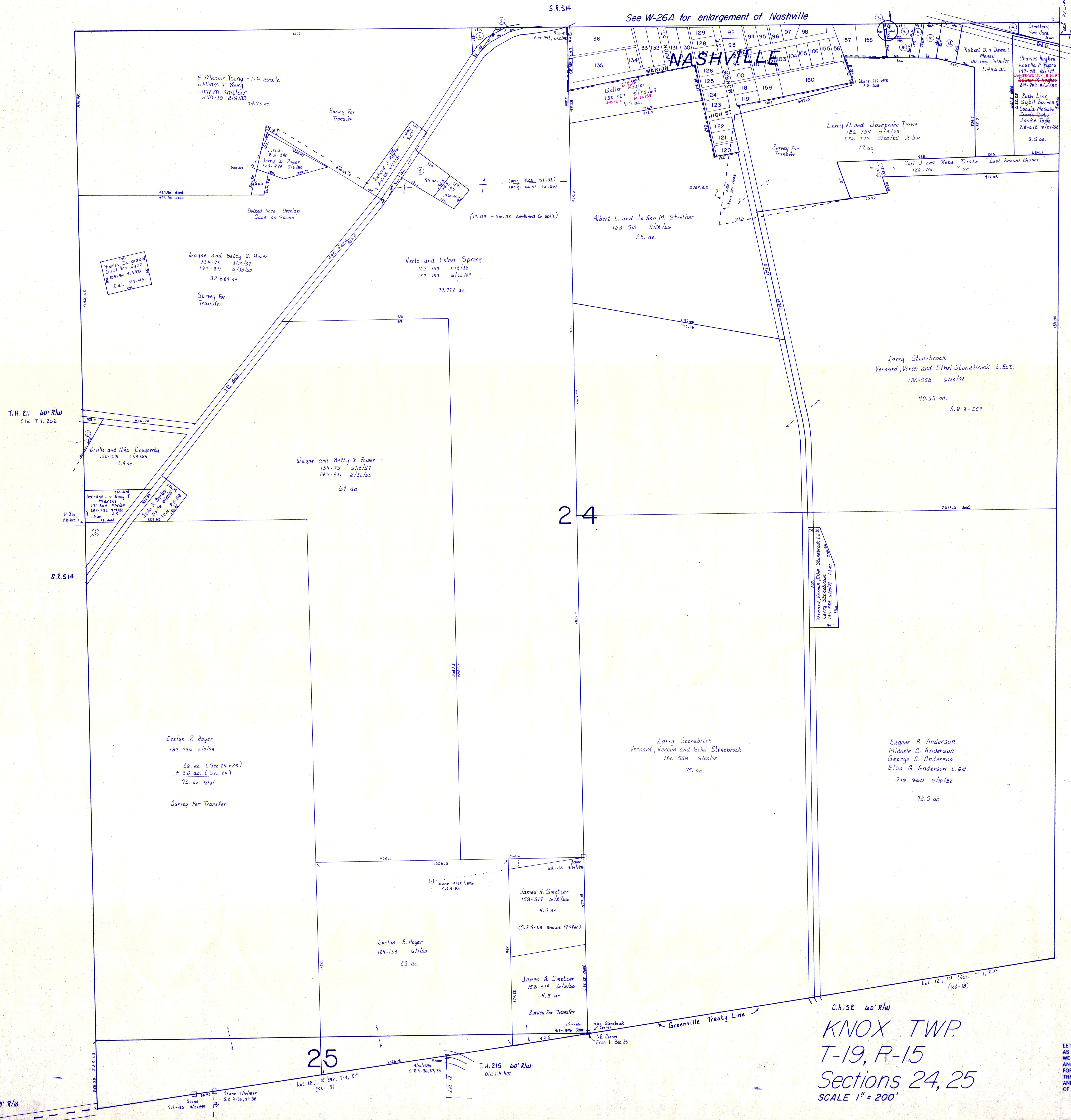


SCALE: 1" = 100'

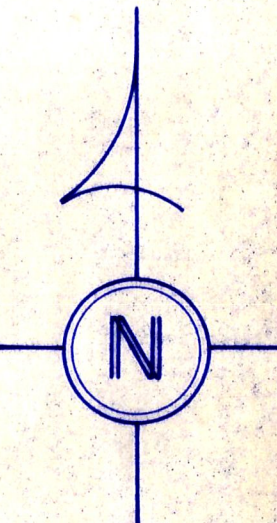
See W-26A for enlargement of Nashville



S.R. 39
S.R. 60

- ① .28 ac. The Nashville Cemetery Association
P. 4-41 154-331 11/16/4
- ② .18 ac. The Nashville Cemetery Association
P. 4-41 155-169 3/16/65
- ③ .06 ac. Jack M. Carpenter
S.F.T. 218-177 9/14/82
- ④ .25 ac. Trustees of the First Presbyterian Church
44-25 6/12/19
- ⑤ .75 ac. Betty A. Galbraith
154-219 8/24/64
P. 4-38 237-374 12/24/87
- ⑥ .36 ac. Betty A. Galbraith
178-631 2/19/71
P. 5-106 237-374 12/24/87
- ⑦ .10 ac. Thomas J. and Leonora E. Carlin
178-723 12/16/71
- ⑧ .50 ac. Bernard L. and Ruby J. Martin
177-345 6/14/69
209-932 7/16/80 J.S.
- ⑨ .20 ac. Jerry L. and A. Kaye Parsons
189-438 8/21/77
- ⑩ .25 ac. Jack M. Carpenter
S.F.T. 218-177 9/14/82
- ⑪ .114 ac. Jerry L. and A. Kaye Parsons
189-438 8/21/77
- ⑫ .34 ac. Carl D. and Brigitta E. Brennstuhl
177-116 6/17/71
243-555 5/13/81
- ⑬ .504 ac. Carl D. and Brigitta E. Brennstuhl
177-116 6/17/71
243-555 5/13/81

C.H. 52 60' R/W
KNOX TWP.
T-19, R-15
Sections 24, 25
SCALE 1" = 200'



LET IT BE KNOWN, THIS MAP HAS BEEN PREPARED AS A REFERENCE GUIDE TO PROPERTY OWNERSHIP. WE BELIEVE THIS INFORMATION TO BE CORRECT AND CURRENT, HOWEVER, IT IS NOT INTENDED FOR ANY LEGAL USE, WHETHER IT BE IN SALES, TRANSFERS, TRADES, LEASES OF ANY TYPE, ETC., AND DO NOT ACCEPT RESPONSIBILITY FOR ERRORS OF ANY NATURE OR OMISSIONS CONTAINED HEREIN.

KNOX TWP.