

Hickory Spring Subdivision
 Plat 18-702 Platted 8/12/2003
 0600381002 KURTZ DARRYL L. AND JENNIFER G.
 OR.0161-97 8/18/2003
 2.708 ac

Honey Run Village
 Plat 17-746 Platted 12/29/2000

0601093000 PHILLIPS NORMAN E. AND CANDACE L.
 OR.0163-151 9/3/2003
 4.445 ac

0601093002 STOCK MARJORIE H.
 219-724 3/3/1983
 OR.0064-88 12/13/2000
 3.091 ac

0601093005 LEE ROBERT AND BEVERLY
 OR.0065-334 1/8/2001
 4.86 ac

0601093006 NORTON JAMES B. AND VIRGINIA L.
 OR.0074-897 5/15/2001
 4.873 ac

0601093007 NORTON JAMES B. AND VIRGINIA L.
 OR.0113-119 5/17/2002
 5.097 ac

0601093008 STOCK MARJORIE H.
 219-724 3/3/1983
 4.528 ac

0601093009 STOCK MARJORIE H.
 219-724 3/3/1983
 OR.0064-88 12/13/2000
 4.747 ac

Replat of Lots 3 & 4
 Plat 18-403 Platted 10/8/2002

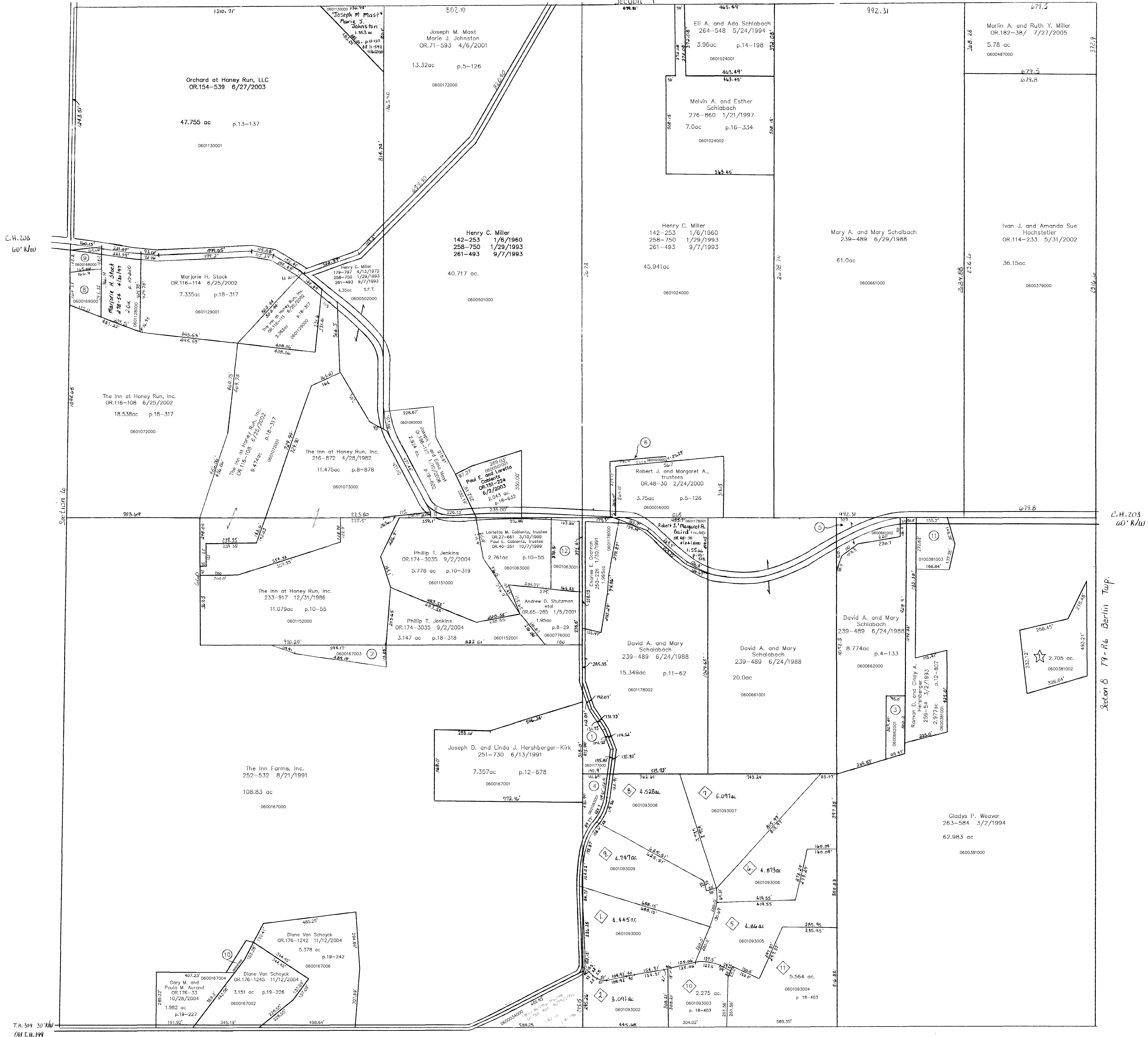
0601093003 STOCK MARJORIE H.
 219-724 3/3/1983
 2.275 ac

0601093004 STOCK MARJORIE H.
 219-724 3/3/1983
 5.564 ac

T.H. 327 30' NW
 641 T.H. 116

T.H. 331 40' NW
 641 T.H. 151

Section 4



0601177000 HERSHBERGER-KIRK JOSEPH D. AND LINDA J.
 OR.0040-24 5/14/1995
 1.106 ac p.10-425

0600167003 THE INN AT HONEY RUN, INC.
 OR.0040-24 10/5/1999
 0.686 ac p.17-261

0600662001 HERSHBERGER ROMAN D. AND CINDY A.
 OR.0064-90 12/13/2000
 0.808 ac p.17-723

0601093001 THE INN FARM, INC.
 OR.0064-90 12/13/2000
 0.808 ac p.17-723

0600661002 SCHLABACH DAVID A. AND MARY
 239-489 6/24/1988
 OR.0034-607 7/7/1999
 1.0 ac

0601023000 BAIRD ROBERT J. AND MARGARET A. TRUSTEES
 OR.0048-33 2/24/2000
 0.349 ac p.8-859

NOT USED

0600169000 ALLISON JEFFERY J. AND VIOLA S.
 OR.0039-741 10/1/1999
 0.776 ac p.8-157

0600168000 ALLISON JEFFERY J. AND VIOLA S.
 OR.0039-741 10/1/1999
 0.46 ac

0600167005 VAN SCHOYCK DIANE
 OR.0176-1242 11/12/2004
 0.184 ac p.19-242

0600381003 Eugene D. and Joani M. Weaver
 OR.179-1013 4/5/2005
 1.122 ac p.19-356

0601063001 Loretta M. Coblenz, trustee
 OR.27-654 3/10/1999
 Paul E. Coblenz, trustee
 OR.40-253 10/7/1999
 1.432 ac p.17-23

LET IT BE KNOWN, THIS MAP HAS BEEN PREPARED AS A REFERENCE GUIDE TO PROPERTY OWNERSHIP. WE BELIEVE THIS INFORMATION TO BE CORRECT AND CURRENT, HOWEVER, IT IS NOT INTENDED FOR ANY LEGAL USE, WHETHER IT BE IN SALES, TRANSFERS, TRADES, LEASES OF ANY TYPE, ETC., AND DO NOT ACCEPT RESPONSIBILITY FOR ERRORS OF ANY NATURE OR OMISSIONS CONTAINED HEREIN.

T-9, R-6, Sec. 7
 HARDY TWP.
 SCALE 1"=200'

Last Revision: 1/10/2006

H-39