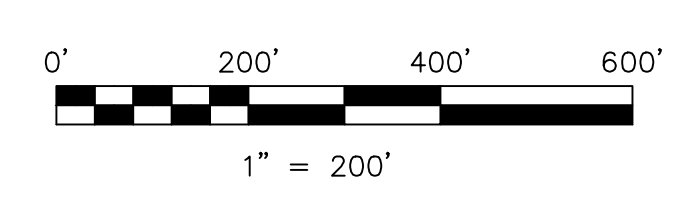


- ① HOTHAM SHIRLEY D.
OR.0172-1073 5/18/2004
5.0 ac p.10-817
(1.8558 ac Lot 39 + 3.3442 ac Lot 34)
- ② not used
- 0601022002 ③ CUMMINGS LORREE D.
OR.0122-112 9/5/2002
1.3242 ac p.10-784
- 0600078000 ④ SCHLABACH JOHANNES AND DONNA MARIE
OR.0165-225 9/19/2003
0.07 ac p.5-160
- 0601098003 ⑤ METCALF REBECCA
OR.0059-907 10/5/2000
0.7339 ac p.12-93
- ⑥ not used
- 0600687000 ⑦ FELDER PIUS MARTIN AND MANUELA
OR.0062-663 11/17/2000
0.35 ac
- 0601022004 ⑧ SCHLABACH ROY A. AND MARILYN L.
235-976 7/24/1987
1.4636 ac p.10-785

Last Revision: 9/8/2005

**T-9, R-7, Section 11
1st Qtr, Lots 39, 40, 44, 45
HARDY TWP.
HOLMES COUNTY, OHIO**



S.F.T. new survey required for next transfer

LET IT BE KNOWN, THIS MAP HAS BEEN PREPARED AS A REFERENCE GUIDE TO PROPERTY OWNERSHIP. WE BELIEVE THIS INFORMATION TO BE CORRECT AND CURRENT, HOWEVER IT IS NOT INTENDED FOR ANY LEGAL USE, WHETHER IT BE IN SALES, TRANSFERS, TRADES, LEASES OF ANY TYPE, ETC., AND DO NOT ACCEPT RESPONSIBILITY FOR ERRORS OF ANY NATURE OR OMISSIONS CONTAINED HEREIN.

H-27

Sec. 15
Hardy Twp.
(H-32)