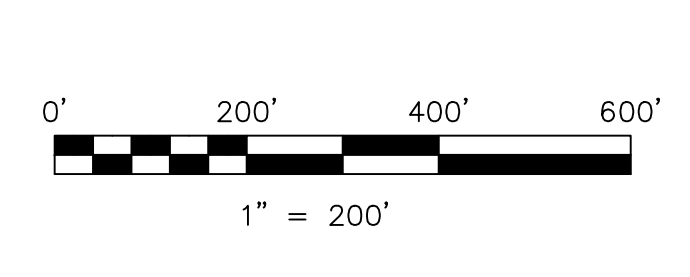


- 0600936003 ① BRUNN RICHARD C. TRUSTEE
265-600 8/18/1994
0.082 ac p.14-583
- 0600884004 ② STATE OF OHIO
262-366 11/18/1993
0.047 ac p.14-364
- 0600104000 ③ DEHASS TED W. AND MARY KATHRYN
257-634 10/22/1992
0.135 ac
- 0600889001 ④ McDOWELL KURT A. AND STACIE A.
257-417 10/5/1992
1.22 ac p.13-170
- 0690013000 ⑤ HOLMES-WAYNE ELECTRIC COOPERATIVE, INC.
197-242 2/22/1977
0.639 ac p.7-775
- 0600847000 ⑥ Jerald and Phyllis Ann Bear
OR.185-2809 12/29/2005
1.682 ac p.13-183
- 0600143001 ⑦ V.K.S.K. INVESTMENTS, LLC
OR.0163-248 9/4/2003
1.324 ac p.18-627
- 0600987002 ⑧ Ted W. and Mary Kathryn DeHass
OR.185-1331 12/12/2005
0.022 ac total p.19-570
(0.005 ac Lot 17 + 0.017 ac Lot 16)
- ⑨ not used
- 0600987001 ⑩ Ted W. and Mary Kathryn DeHass
OR.185-1336 12/12/2005
0.874 ac p.19-570
- 0600936006 ⑪ Richard C. Brunn, trustee
OR.185-1336 12/12/2005
1.647 ac p.19-570

Last Revision: 12/29/2005
T-9, R-7, 1st Qtr.
Lots 3, 7, 11, 12, 16, 17
HARDY TWP.
HOLMES COUNTY, OHIO



S.F.T. new survey required
 for next transfer

LET IT BE KNOWN, THIS MAP HAS BEEN PREPARED AS A REFERENCE GUIDE TO PROPERTY OWNERSHIP. WE BELIEVE THIS INFORMATION TO BE CORRECT AND CURRENT. HOWEVER IT IS NOT INTENDED FOR ANY LEGAL USE, WHETHER IT BE IN SALES, TRANSFERS, TRACES, LEASES OF ANY TYPE, ETC., AND DO NOT ACCEPT RESPONSIBILITY FOR ERRORS OF ANY NATURE OR OMISSIONS CONTAINED HEREIN.