

3rd Qtr. Lot 13

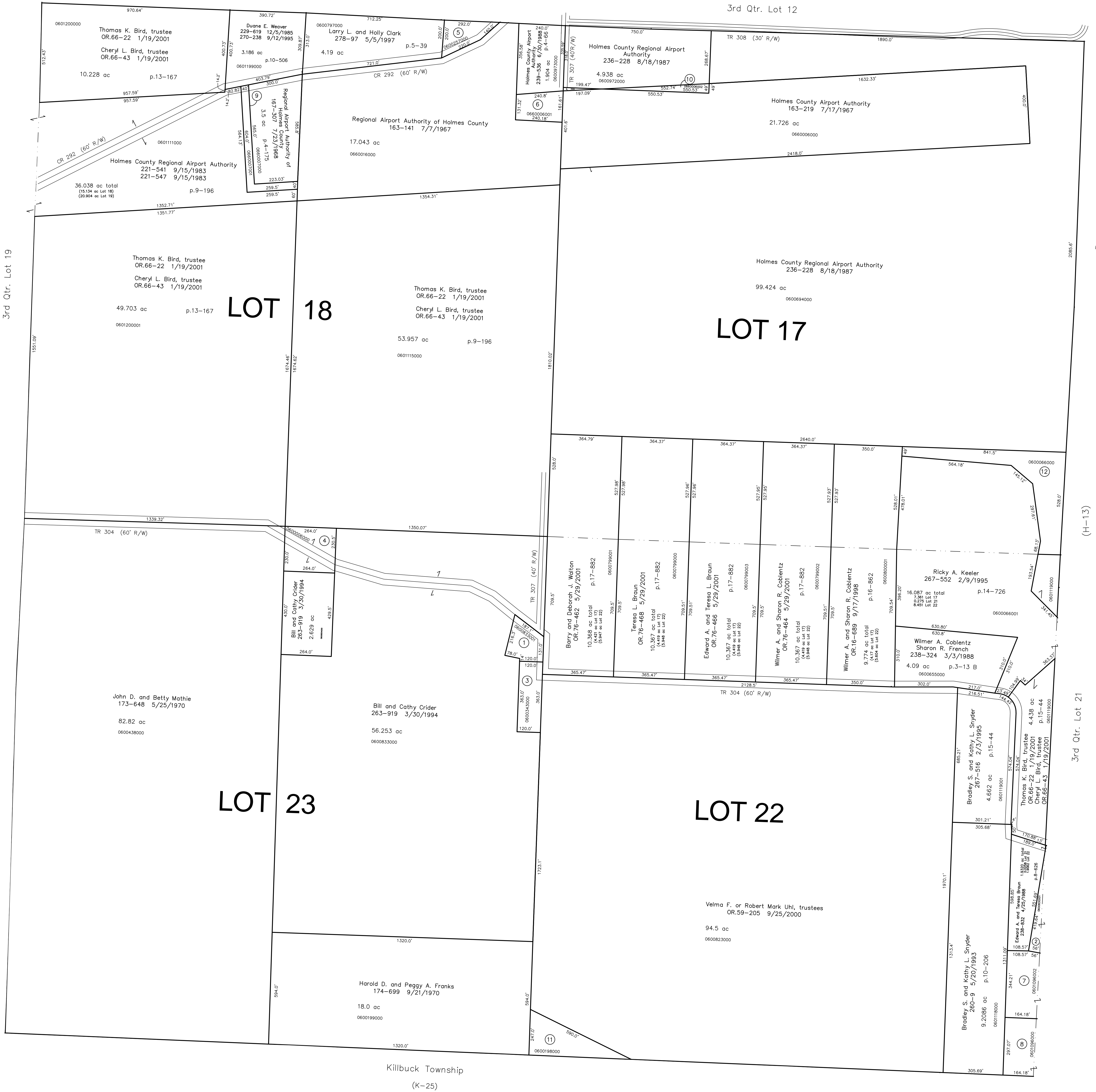
(H-08)

3rd Qtr. Lot 12

- 0600833001 ① Donald F. and Patricia A. Huebner
230-911 4/18/1986
0.747 ac p.10-554
- 0600830001 ② Lavern J. and Luella E. Miller
263-761 3/15/1994
0.27 ac p.13-162
- 0600343000 ③ Donald F. and Patricia A. Huebner
178-1 9/13/1971
1.0 ac p.5-94
- 0600006000 ④ Teresa Lynn Braun
261-266 8/24/1993
1.371 ac
- 0600257000 ⑤ Brian and Anne Lieb
268-268 4/20/1995
0.77 ac p.5-46
- 0600006001 ⑥ Holmes County Airport Authority
163-219 7/17/1967
0.806 ac
- 0601096002 ⑦ Dirk and Beth A. Barnes
OR. 120-190 8/13/2002
1.298 ac p.18-352
- 0601096000 ⑧ R & E Uhl Family Farm, LLC
OR. 64-633 12/21/2000
1.119 ac p.17-738
- 0660007001 ⑨ Regional Airport Authority of
Holmes County
167-307 7/23/1968
0.76 ac p.4-175
- 0660006002 ⑩ Holmes County Airport Authority
163-219 7/17/1967
0.312 ac
- 0600198000 ⑪ Harold D. and Peggy A. Franks
174-699 9/21/1970
1.5 ac
- 0600066000 ⑫ Thomas K. Bird, Trustee
OR. 66-22 1/19/2001
Cheryl L. Bird, Trustee
OR. 66-43 1/19/2001
2.829 ac

(H-01)

3rd Qtr. Lot 24



3rd Qtr. Lot 16

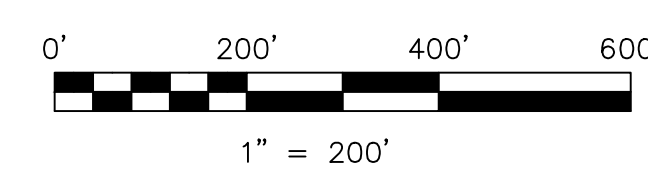
(H-13)

3rd Qtr. Lot 21

Killbuck Township
(K-25)

Last Revision: 11/2/2005

**T-9, R-7, 3rd Qtr.
LOTS 17, 18, 22, 23
HARDY TWP.
HOLMES COUNTY, OHIO**



S.F.T. new survey required
for next transfer

LET IT BE KNOWN, THIS MAP HAS BEEN PREPARED AS A REFERENCE
GUIDE TO PROPERTY OWNERSHIP. WE BELIEVE THIS INFORMATION TO
BE CORRECT AND CURRENT. HOWEVER IT IS NOT INTENDED FOR ANY
LEGAL USE, WHETHER IT BE IN SALES, TRANSFERS, TRAILS, LEASES
OF ANY TYPE, ETC., AND DO NOT ACCEPT RESPONSIBILITY FOR
ERRORS OF ANY NATURE OR OMISSIONS CONTAINED HEREIN.

H-07