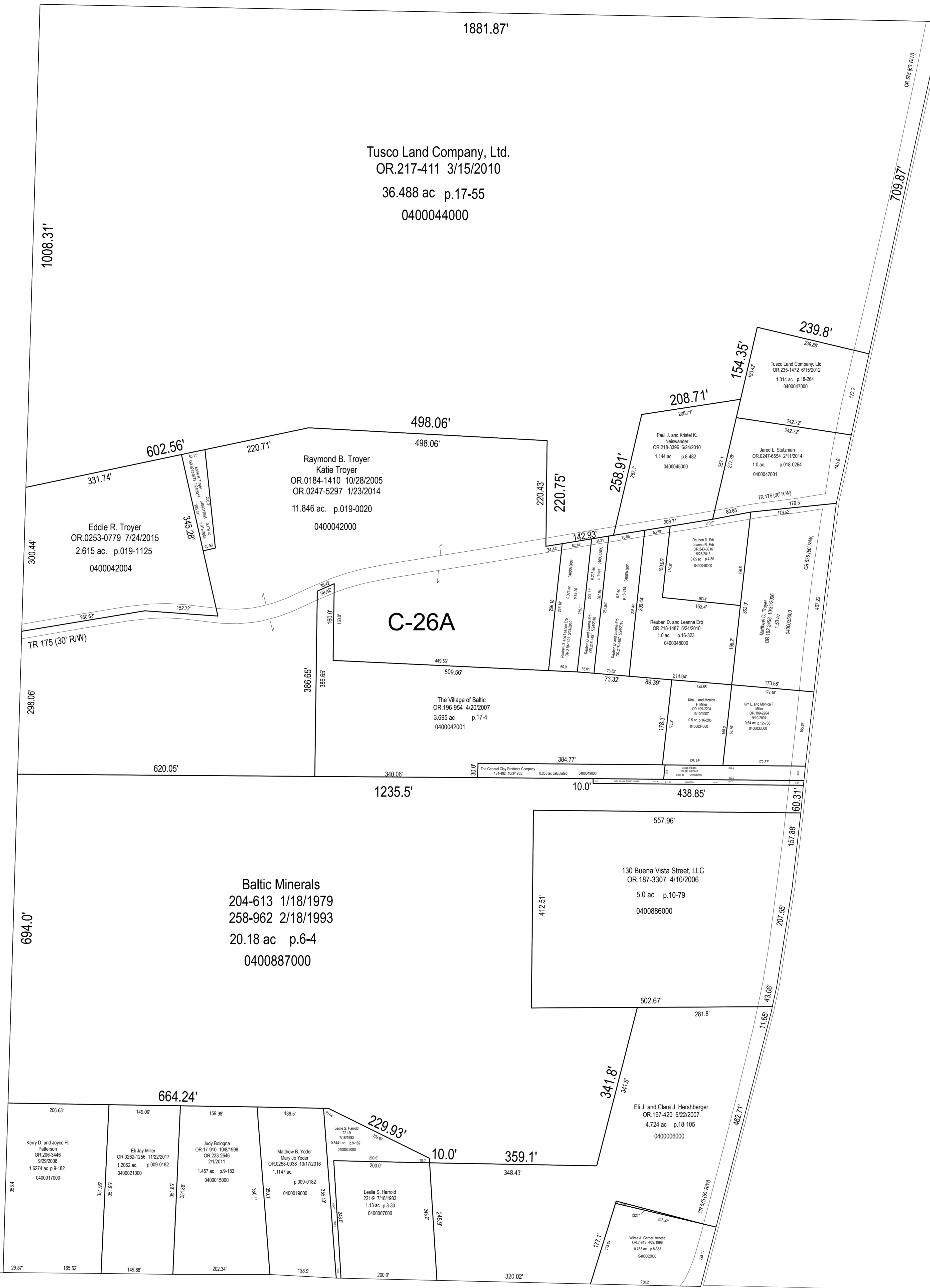


C-21

C-26

C-26B



Tusco Land Company, Ltd.
 OR.217-411 3/15/2010
 36.488 ac p.17-55
 0400044000

Eddie R. Troyer
 OR.0253-0779 7/24/2015
 2.615 ac. p.019-1125
 0400042004

Raymond B. Troyer
 Katie Troyer
 OR.0184-1410 10/28/2005
 OR.0247-5297 1/23/2014
 11.846 ac. p.019-0020
 0400042000

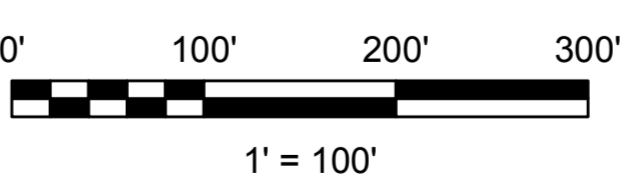
C-26A

The Village of Baltic
 OR.196-594 4/20/2007
 3.695 ac p.17-4
 0400042001

Baltic Minerals
 204-613 1/18/1979
 258-962 2/18/1993
 20.18 ac p.6-4
 0400887000

130 Buena Vista Street, LLC
 OR.187-3307 4/10/2006
 5.0 ac p.10-79
 0400886000

Eli J. and Clara J. Hershberger
 OR.197-420 5/22/2007
 4.724 ac p.18-105
 0400060000



LET IT BE KNOWN, THIS MAP HAS BEEN PREPARED AS A REFERENCE GUIDE TO PROPERTY OWNERSHIP. WE BELIEVE THIS INFORMATION TO BE CORRECT AND CURRENT. HOWEVER IT IS NOT INTENDED FOR ANY LEGAL USE, WHETHER IT BE SALES, TRANSFERS, TRACES, LEASES OF ANY TYPE, ETC. AND DO NOT ACCEPT RESPONSIBILITY FOR ERRORS OF ANY NATURE OR OMISSIONS CONTAINED HEREIN.

S.F.T.
 new survey required for next transfer

Last Revision: 1/2/2018

(west part)
 . Baltic Village
 Sec. 25, T-8, R-4
 Clark Twp.
 Holmes County, Ohio

C-26A