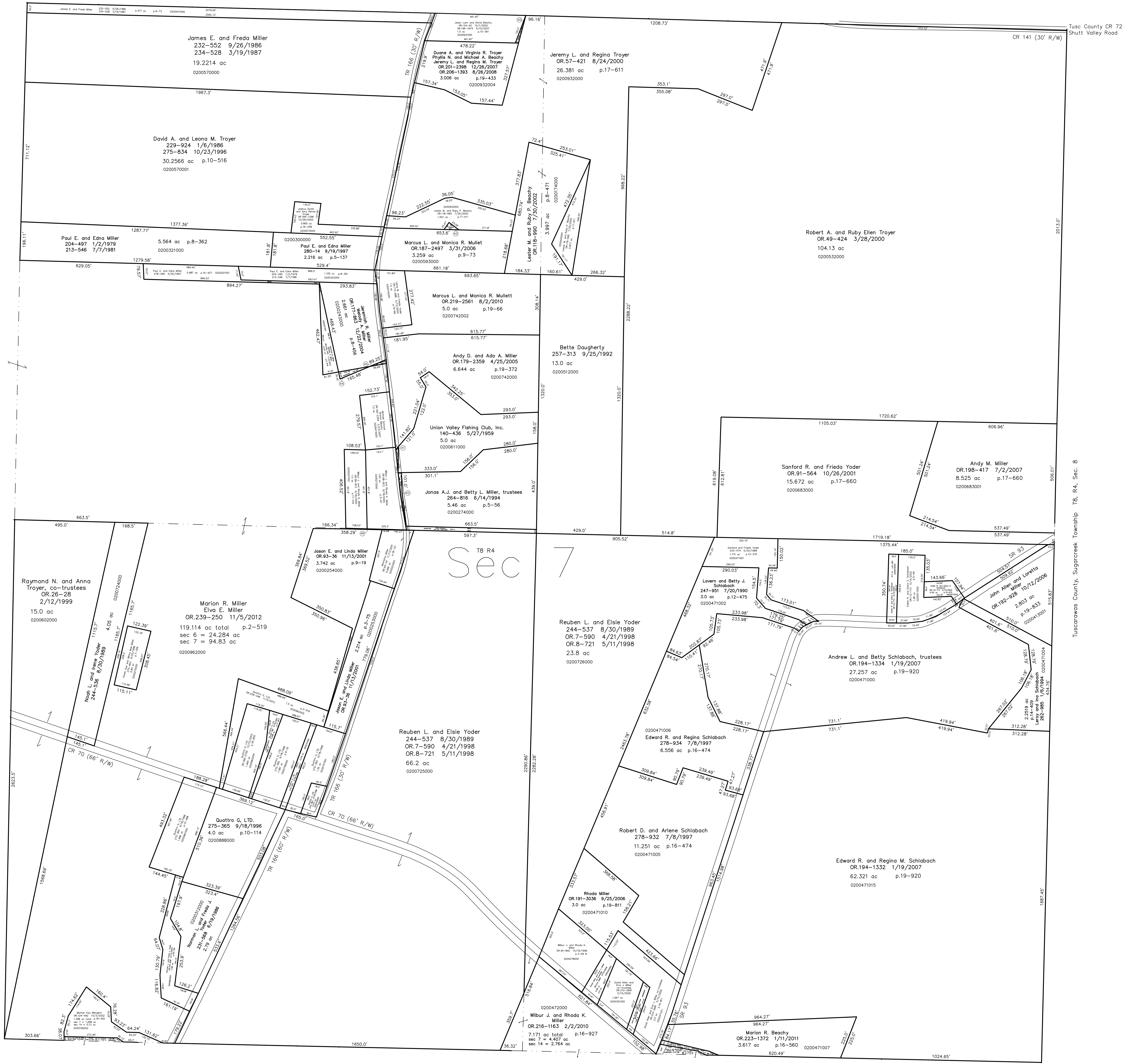


- 0200932003 (40) Jason Lynn Beachy and Gloria Beachy  
OR 180-3415 6/17/2005  
OR 201-289 11/19/2007  
0.027 ac p.19-433
- 0200742004 (41) Andy D. and Ada A. Miller  
OR 179-2359 4/25/2005  
0.02 ac p.19-372
- 0200742003 (42) Andy D. and Ada A. Miller  
OR 179-2359 4/25/2005  
0.058 ac p.19-372
- 0200932001 (43) Marcus L. and Monica R. Mullett  
OR 187-2497 3/31/2006  
0.032 ac p.12-837
- 0200243001 (44) Marlon R. Miller and Elva E. Miller  
OR 239-250 11/5/2012  
0.068 ac p.2-519
- 0200221005 (45) Jeremiah R. Miller and Melody A. Miller  
OR 239-243 11/5/2012  
0.019 ac p.2-519
- 0200962006 (46) Wilbur J. Miller and Rhoda K. Miller  
OR 239-248 11/5/2012  
0.016 ac p.2-519

T8, R5, Sec. 6 C-29

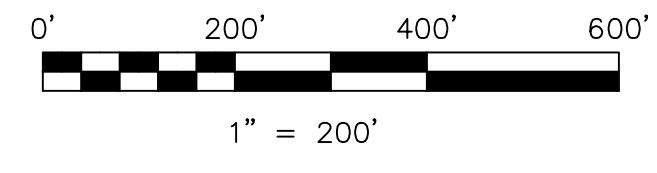


Tusc County CR 72  
Shutt Valley Road

Tuscarawas County, Sugarcreek Township T8, R4, Sec. 8

Last Revision: 11/5/2012

**T-8, R-4, Sec.7**  
**Clark Twp.**  
**Holmes County, Ohio**



LET IT BE KNOWN, THIS MAP HAS BEEN PREPARED AS A REFERENCE GUIDE TO PROPERTY OWNERSHIP. WE BELIEVE THIS INFORMATION TO BE CORRECT AND CURRENT, HOWEVER IT IS NOT INTENDED FOR ANY LEGAL USE, WHETHER IT BE IN SALES, TRANSFERS, TRADES, LEASES OF ANY TYPE, ETC., AND DO NOT ACCEPT RESPONSIBILITY FOR ERRORS OF ANY NATURE OR OMISSIONS CONTAINED HEREIN.

new survey required for next transfer

**C-34**