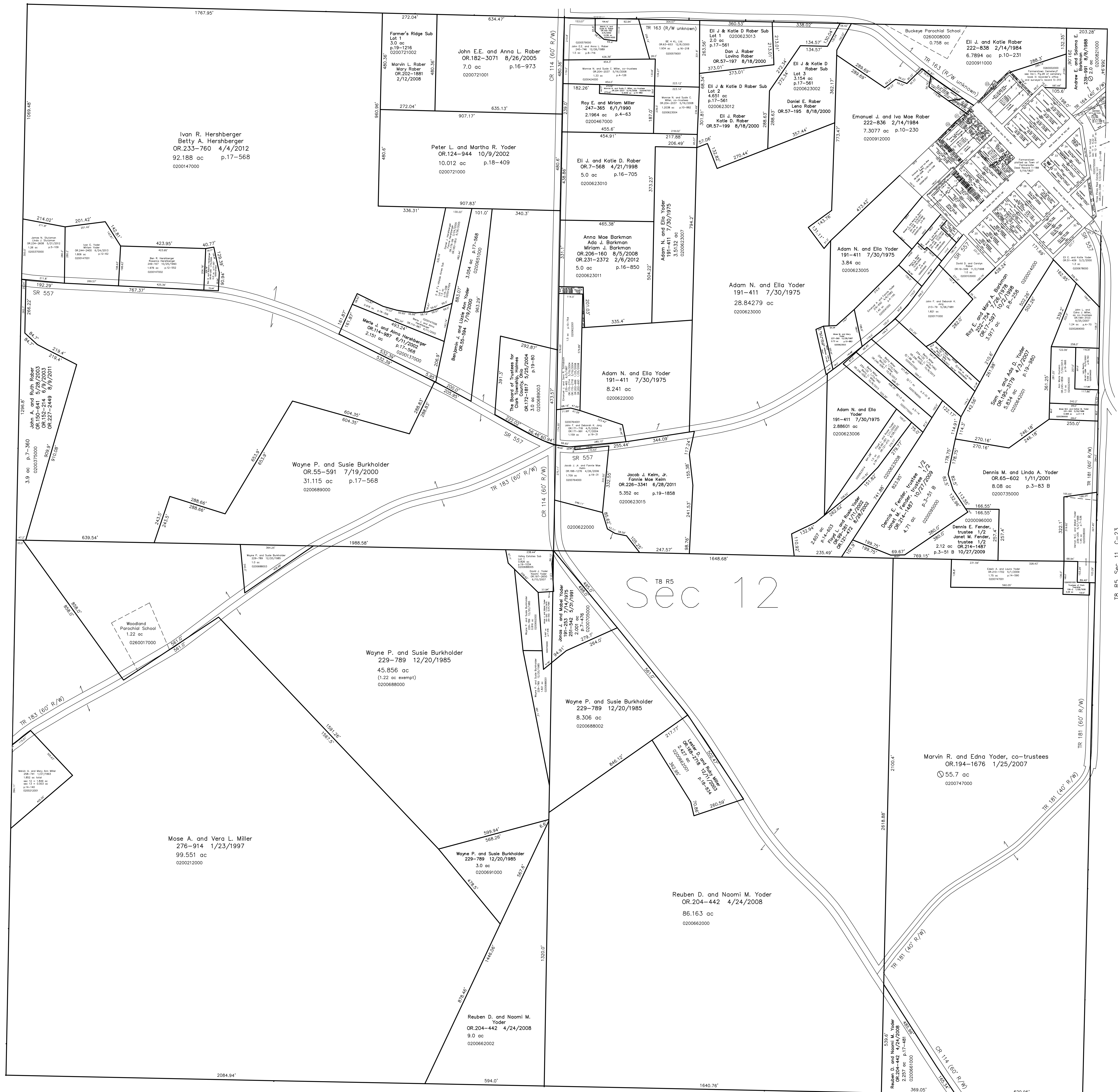


- 0200719000 19 Levi M. and Fannie Yoder
193-580 3/30/1976
235-546 8/10/1992
0.074 ac p.7-589
- 0200912008 20 Andrew L. and Salma E. Barkman
OR.206-2188 9/8/2008
0.006 ac p.19-1348
- 0200912006 21 Emanuel J. and Iva Mae Rober
OR.205-3296 7/30/2008
0.003 ac p.19-1348
- 0200911001 22 Abe J. and Sarah Rober
Robert A. and Miriam M. Rober
OR.216-959 2/1/2010
0.02 ac p.19-1635
- 0200851002 23 Trustees of Clark Township
264-479 5/17/1994
0.009 ac p.14-512
nw pt lot 16 of Farmerstown
- 0201006000 24 Trustees of Clark Township
resolution to vacate 264-728 6/7/1994
0.08 ac p.14-525
- 0201005000 25 Board of Township Trustees of Clark Township
resolution to vacate 264-728 6/7/1994
0.008 ac p.14-525
- 0201027000 26 Eli J. and Katie Rober
OR.212-2762 8/14/2009
0.01 ac p.19-1567
- 0201025000 27 Emanuel J. and Iva Mae Rober
OR.203-3042 4/11/2008
0.013 ac p.19-1267
- 0201026000 28 Emanuel J. and Iva Mae Rober
OR.205-3293 7/30/2008
0.004 ac p.19-1267
- 0201023000 29 Emanuel J. and Iva Mae Rober
OR.203-3042 4/11/2008
0.01 ac p.19-1267
- 0200973002 30 Marvin R. and Edna Yoder, co-trustees
OR.194-1676 1/25/2007
0.016 ac p.12-729

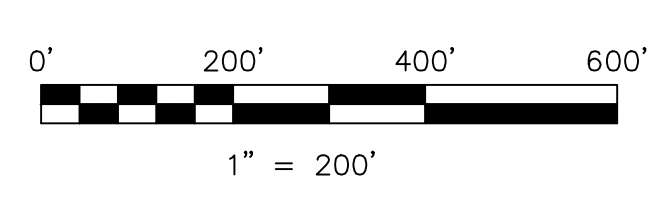


T8, R5, Sec. 13 C-13

T8, R5, Sec. 11 C-23

Sec 12

- D & F's Hillside Acres Subdivision
Plot 19-298 Platted 2/1/2005
- Eli J. & Katie D. Rober Subdivision
Plot 17-561 Platted 7/17/2000
- Farmer's Ridge Subdivision
Plot 19-1216 Platted 12/28/2007
- Valley Estates Subdivision
Plot 19-1034 Platted 5/25/2007



LET IT BE KNOWN, THIS MAP HAS BEEN PREPARED AS A REFERENCE GUIDE TO PROPERTY OWNERSHIP. WE BELIEVE THIS INFORMATION TO BE CORRECT AND CURRENT, HOWEVER IT IS NOT INTENDED FOR ANY LEGAL USE, WHETHER IT BE IN SALES, TRANSFERS, TRUSTS, LEASES OF ANY TYPE, ETC., AND DO NOT ACCEPT RESPONSIBILITY FOR ERRORS OF ANY NATURE OR OMISSIONS CONTAINED HEREIN.

new survey required for next transfer

Last Revision: 10/8/2013

T-8, R-5, Sec.12
Farmerstown Village
Clark Twp.
Holmes County, Ohio

C-18