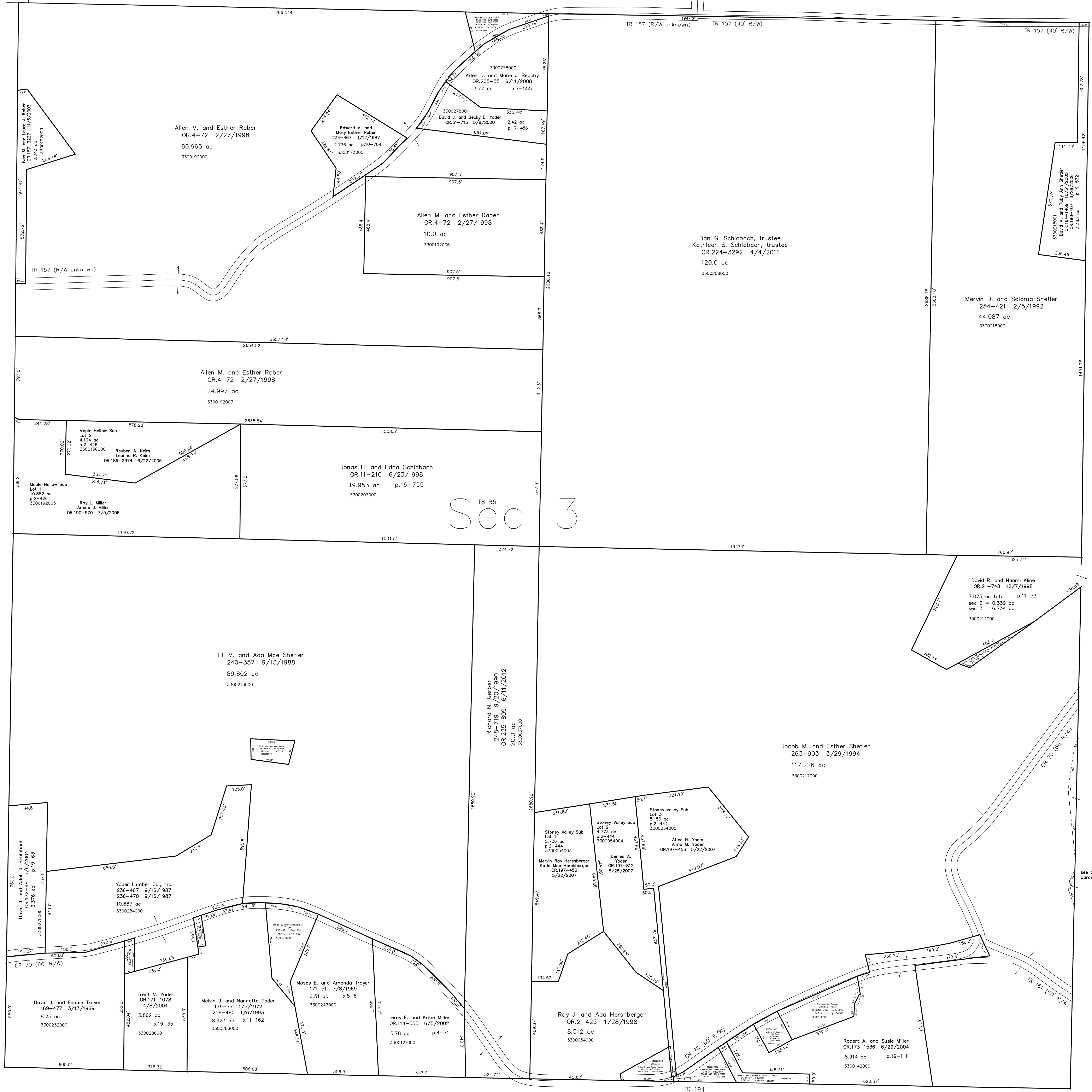


T8, R5, Sec. 4 C-10

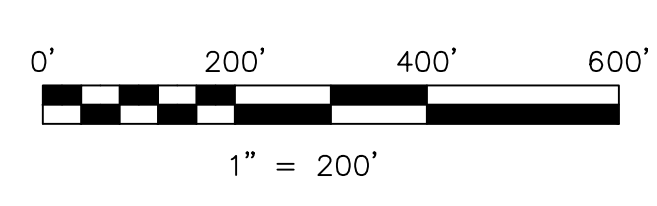
T8, R5, Sec. 2 C-20



T8, R5, Sec. 8 C-14

Maple Hollow Subdivision
 Plat 2-426 Platted 4/27/2006

Stoney Valley Subdivision
 Plat 2-444 Platted 4/27/2007



LET IT BE KNOWN, THIS MAP HAS BEEN PREPARED AS A REFERENCE GUIDE TO PROPERTY OWNERSHIP. WE BELIEVE THIS INFORMATION TO BE CORRECT AND CURRENT, HOWEVER IT IS NOT INTENDED FOR ANY LEGAL USE, WHETHER IT BE IN SALES, TRANSFERS, TRUSTS, LEASES OF ANY TYPE, ETC., AND DO NOT ACCEPT RESPONSIBILITY FOR ERRORS OF ANY NATURE OR OMISSIONS CONTAINED HEREIN.

new survey required for next transfer

Last Revision: 4/2/2013
T-8, R-5, Sec.3
Clark Twp.
Holmes County, Ohio

C-15

