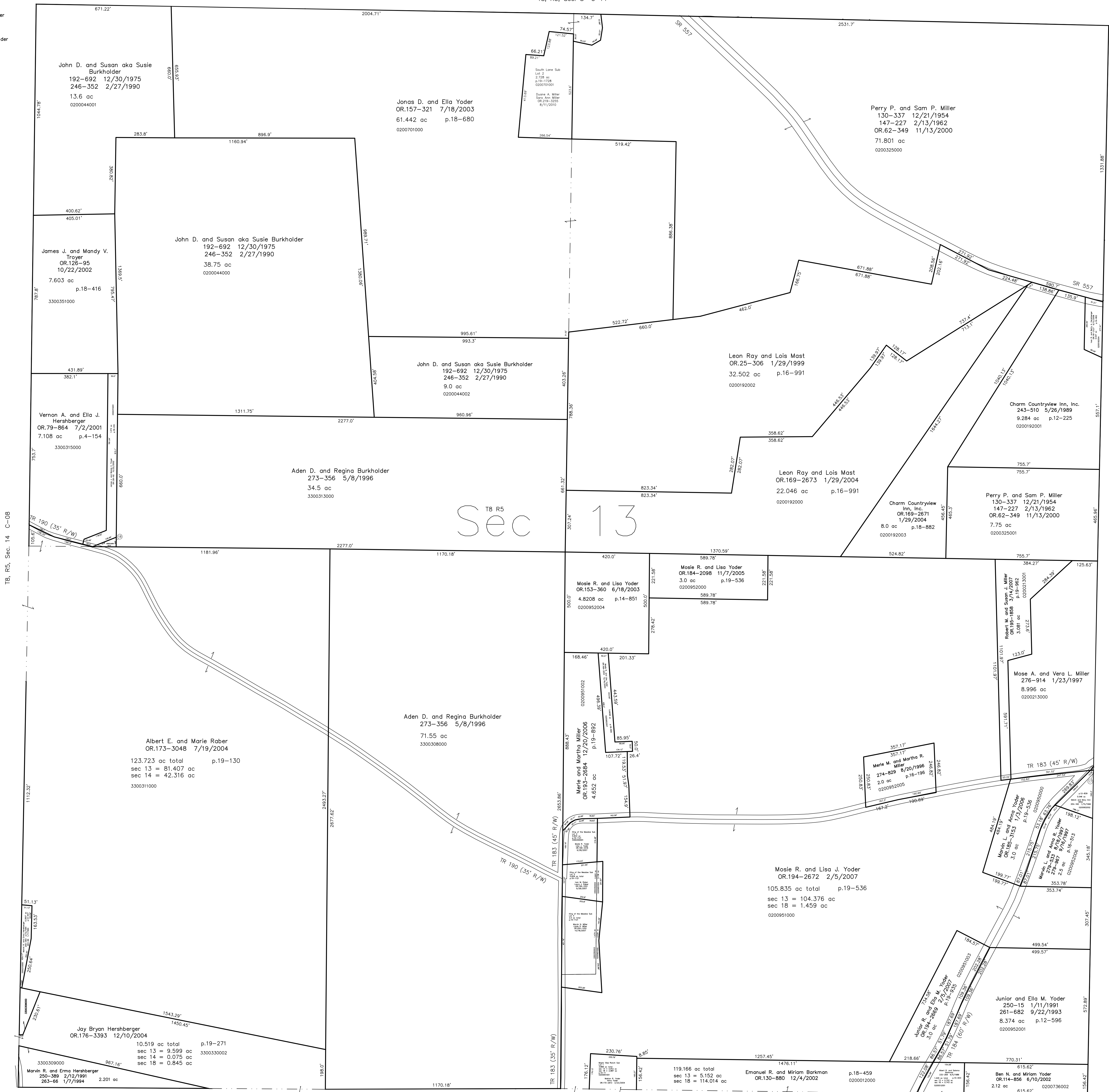


0200212001 (17) Melvin A. and Mary Ann Miller
258-741 1/27/1993
0.003 ac p.14-140
3300314000 (18) Aden D. and Regina Burkholder
273-356 5/8/1996
0.056 ac p.4-156



King of the Meadow Subdivision First Addition
Plat 19-1121 Platted 8/24/2007

Maple View Ranch Subdivision
Plat 19-11 Platted 3/10/2004

South Lane Subdivision Replot of Lot 1 and Additional Lands
Plat 19-1728 Platted 7/23/2010

Last Revision: 4/30/2013

T-8, R-5, Sec.13
Clark Twp.
Holmes County, Ohio



LET IT BE KNOWN, THIS MAP HAS BEEN PREPARED AS A REFERENCE GUIDE TO PROPERTY OWNERSHIP. WE BELIEVE THIS INFORMATION TO BE CORRECT AND CURRENT, HOWEVER IT IS NOT INTENDED FOR ANY LEGAL USE, WHETHER IT BE IN SALES, TRANSFERS, TRADES, LEASES OF ANY TYPE, ETC., AND DO NOT ACCEPT RESPONSIBILITY FOR ERRORS OF ANY NATURE OR OMISSIONS CONTAINED HEREIN.

new survey required for next transfer

C-13