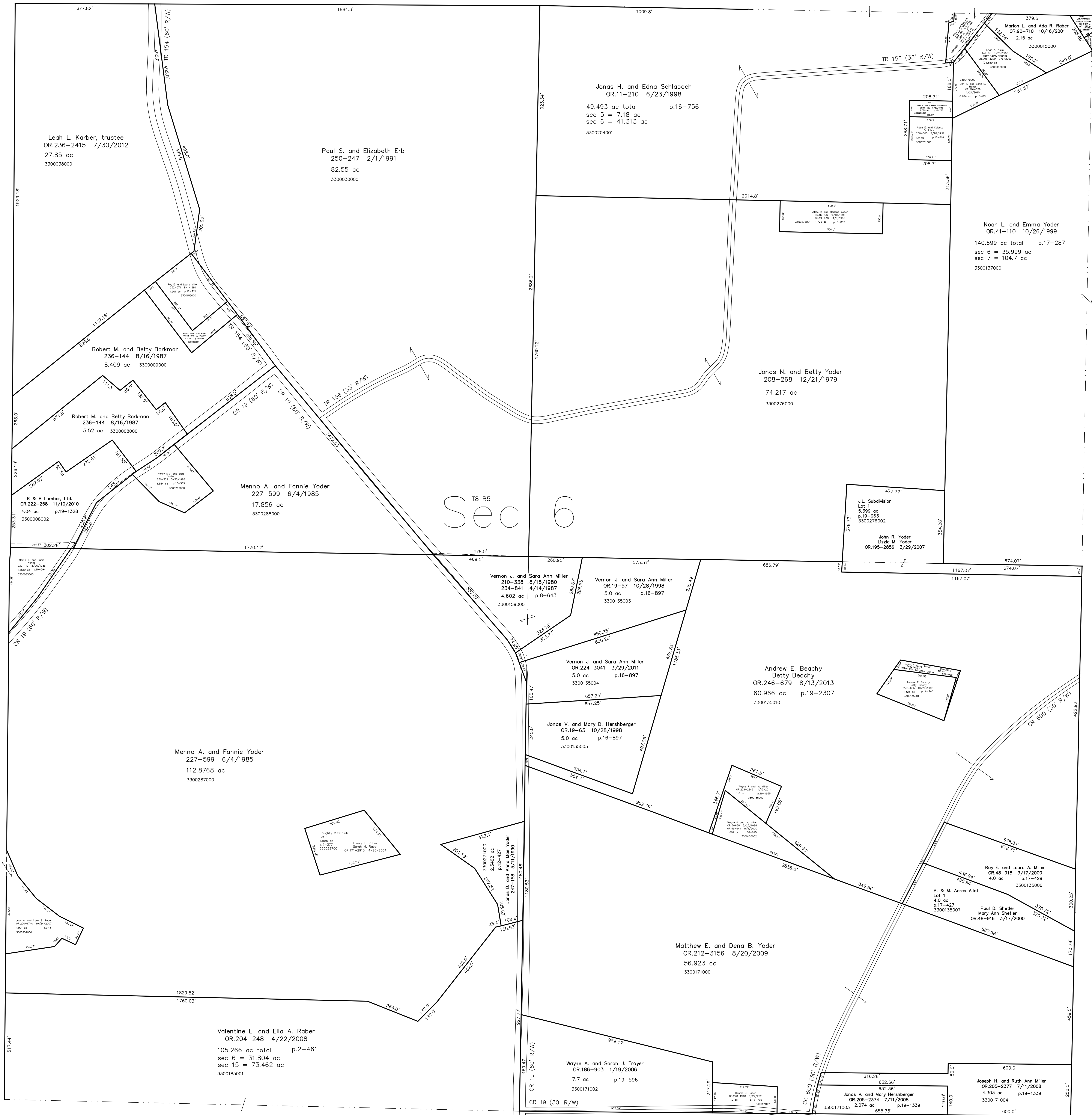


3300138000 Stoney Ridge, Inc.
OR.242-1974 3/22/2013
0.035 ac p.17-259



Mechanic Township T8, R6, Sec. 10 MC-36

T8, R5, Sec. 7 C-9

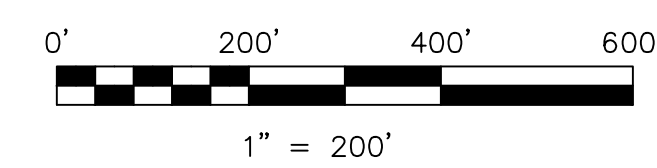
Daughty View Subdivision No.1
Plat 2-377 Platted 4/2/2004

J.L. Subdivision
Plat 19-963 Platted 3/14/2007

P. & M. Acres Allotment No.1
Plat 17-427 Platted 3/16/2000

Last Revision: 8/13/2013

T-8, R-5, Sec.6
Clark Twp.
Holmes County, Ohio



LET IT BE KNOWN, THIS MAP HAS BEEN PREPARED AS A REFERENCE GUIDE TO PROPERTY OWNERSHIP. WE BELIEVE THIS INFORMATION TO BE CORRECT AND CURRENT, HOWEVER IT IS NOT INTENDED FOR ANY LEGAL USE, WHETHER IT BE IN SALES, TRANSFERS, TRADES, LEASES OF ANY TYPE, ETC., AND DO NOT ACCEPT RESPONSIBILITY FOR ERRORS OF ANY NATURE OR OMISSIONS CONTAINED HEREIN.

new survey required for next transfer

C-04